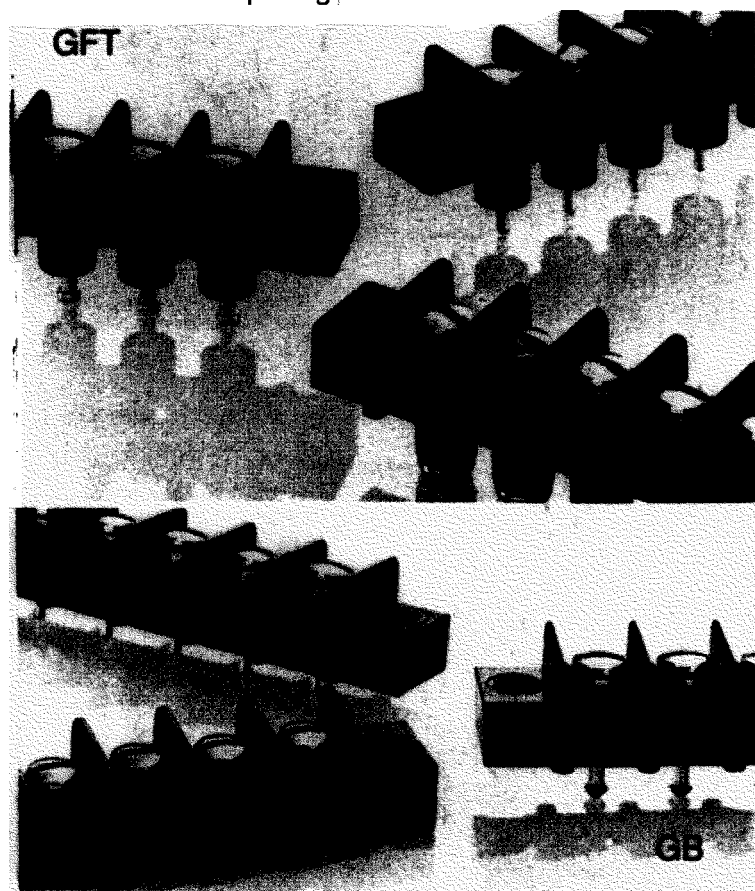


Series GFT/GB


7/16" (11.11 mm)
Center-to-Center Spacing



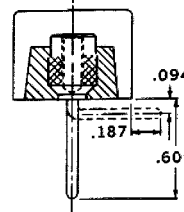
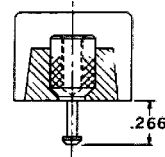
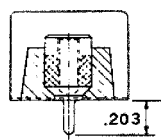
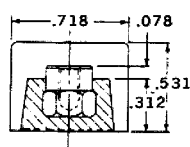
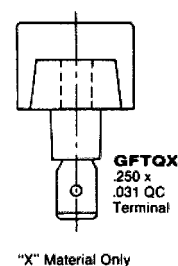
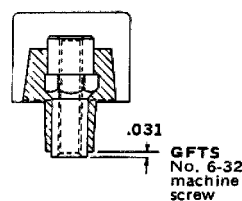
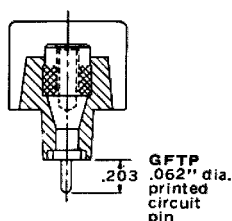
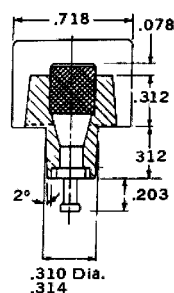
FEATURES

- **SUPERIOR CONSTRUCTION** — All terminals are molded in place with precision screw machined brass inserts which will not twist, virtually eliminating broken solder joints while providing a full mechanical thread system.
- **IDEAL FOR SUB-CHASSIS OR THRU-PANEL APPLICATION** — No costly insulation or mounting set-up since feed-thru insulators are an integral part of the moldings. Feature provides a full 1/4 inch terminal to ground clearance even thru 1/16 inch chassis.
- **DURABLE BASE MATERIAL** — Made of black thermo-set phenolic, or high-impact, break-resistant thermoplastic.
- **ELECTRICAL RATING** — 20 amps/300 volts.
- **COMPACT BARRIER-TYPE DESIGN** — Especially suited for electronic and control applications.
- **FEED-THRU, PRINTED CIRCUIT OR SURFACE CONNECTION** — One thru 26 terminals on 7/16 inch center-to-center spacing.
- **BROAD WIRE RANGE** — UL recognized for No. 22AWG to No. 12AWG, depending on type of external contact designated, with CSA requiring use of lugs on wire larger than No. 16AWG.
- **TERMINAL FLEXIBILITY** — External terminals available in three screw sizes with various internal terminal types.
- **RECOGNITION AND LISTING** — UL recognized and CSA certified.
- **METRIC SCREWS** — Available in GBPX and GFTX Series for export applications.

 Recognized under the Components Program of Underwriters Laboratories, Inc. Standard 1059, Guide No. XCFR2, File No. E62557.

 Guide No. 184-N-90, Report No. LR39186-1.

VARIATIONS



*Consult factory
for minimums.

NOTE: Standard bend dimension shown.
Other bend dimensions are available.