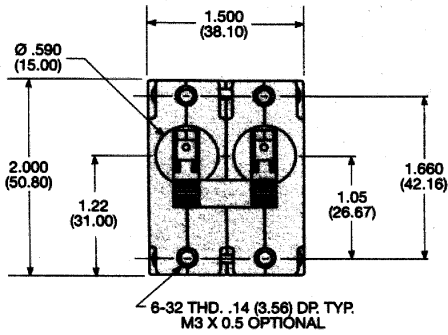


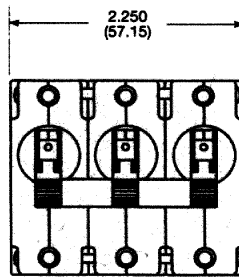
OUTLINE DIMENSIONS - Actuator per pole

W6 Series

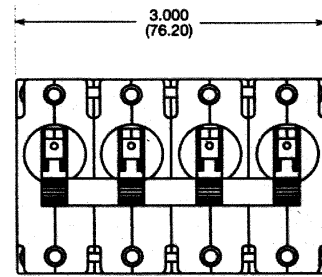
2 POLE



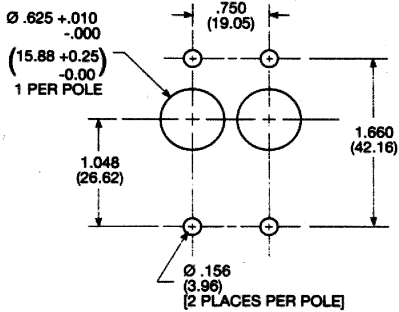
3 POLE



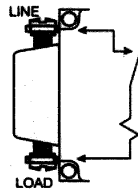
4 POLE



PANEL MOUNTING CUTOUT

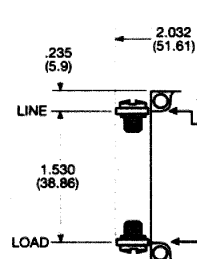


VDE MODELS W/SCREW TERMINALS

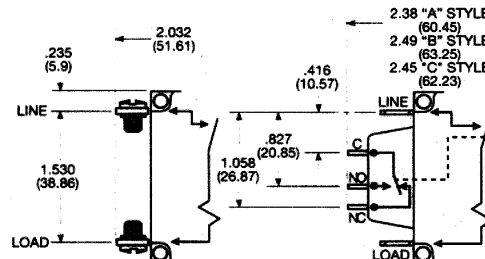


SERIES TRIP

UL/CSA MODELS W/SCREW TERMINALS



UL/CSA/VDE MODELS W/AUX. SWITCH



Notes:

1. Terminal protrusion dimensions are referenced from back of mounting panel.
2. Main terminals are male quick connect type .250 (6.35) wide x .031 (.79) thick x .377 (9.58) long. Optional 8-32 x .250 (6.35) or 10-32 x .250 (6.35) screw type.

3. Panel mounting cutout detail mtg. detail tol.: ± .005 (.13) unless noted. Add additional cutouts to correspond to number of poles. Outline drawing tolerance ± .015 (.38) unless noted. Dimensions in brackets () are in millimeters.

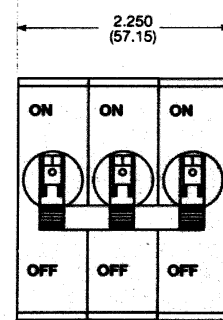
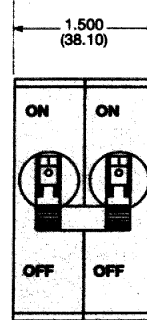
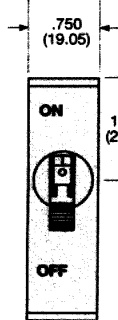
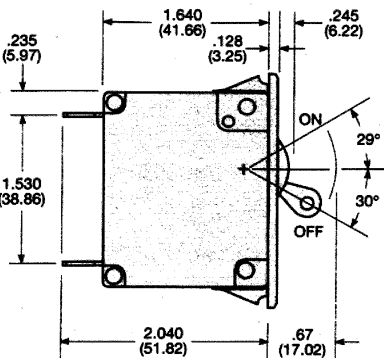
OUTLINE DIMENSIONS - Snap-in Mounted Models

W6 Series

1 POLE

2 POLE

3 POLE



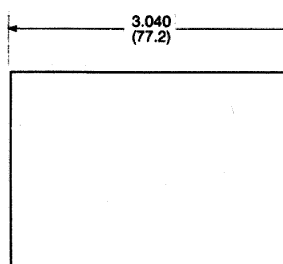
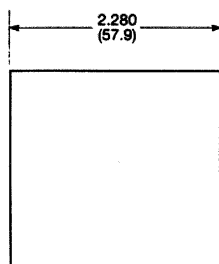
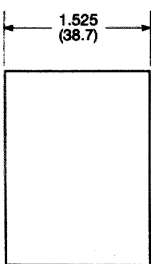
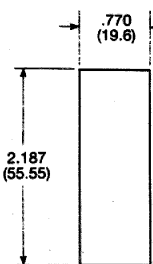
PANEL MOUNTING CUTOUT

1 POLE

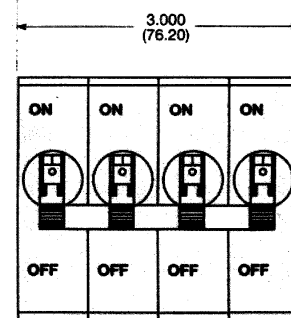
2 POLE

3 POLE

4 POLE



4 POLE



Notes:

- Mounting Detail Tol.: ± .005 (.13) unless noted
Panel Thickness: .047 (1.2) to .110 (2.8)