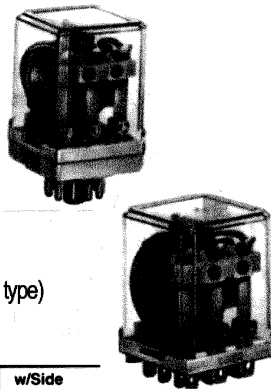


RR SERIES - POWER TYPE, 10A CONTACT RATING, 1, 2, AND 3 POLES

Features

- High reliability and long service life
- Available in octal (8- and 11-pin) and square (11-blade) base
- Options include check button for test operation, indicator light and side flange
- Contacts rated up to 10A at 240V AC
- Choose from DIN rail or panel type sockets for a wide range of mounting applications
- UL Recognized, CSA Certified, TUV approved (pin type)
CE marked (pin type only)



RR Series Relay Type List

Terminal Style	Contact Config.	Basic Type	w/Indicator Light	w/Check Button	w/Side Flange
P, PA (Pin)	DPDT 3PDT	RR2P-U RR3PA-U	RR2P-UL RR3PA-UL	RR2P-UC RR3PA-UC	— —
B, BA (Blade)	SPDT DPDT 3PDT	RR1BA-U RR2BA-U RR3B-U	RR1BA-UL RR2BA-UL RR3B-UL	RR1BA-UC RR2BA-UC RR3B-UC	RR1BA-US RR2BA-US RR3B-US

NOTE: Add coil voltage to part number.

RR Series

Coil Ratings

Rated Voltage		Rated Current ±15% @ 20°C		Coil Resistance ±10% @ 20°C
		60Hz	50Hz	
AC	6V	420 mA	490 mA	4.9Ω
	12V	210 mA	245 mA	18Ω
	24V	105 mA	121 mA	79Ω
	120V	20.5 mA	24 mA	2100Ω
	240V	10.5 mA	12.1 mA	8330Ω
DC	6V	240 mA		25Ω
	12V	120 mA		100Ω
	24V	60 mA		400Ω
	48V	30 mA		1600Ω
	110V	13 mA		8460Ω

Sockets

Relays	Sockets			Spring (Optional)
	DIN Rail Mount		Panel Mount	
	Standard	Fingersafe		
RR2P	SR2P-05 -06	SR2P-05C	SR2P-51	SR2B-02F1 SR3P-01F1
RR3PA	SR3P-05 -06	SR3P-05C	SR3P-51	SR3B-02F1
RR1BA RR2BA RR3B	SR3B-05	-	SR3B-51	-

Contact Ratings and Specifications

Contact Material: Silver (Ag)

Contact Resistance: 30 mΩ maximum (initial value)

Operating Time: 25 ms maximum

Release Time: 25 ms maximum

Power Consumption: AC: 2.5VA (60Hz); DC: 1.5W approx.

Insulation Resistance: 100 MΩ minimum
(measured w/500 DC megger)

Dielectric Strength (Pin Type-RR2P, RR3PA):

Between live and non-live parts - 1,500VAC, 1 minute

Between contact circuits and operating coil - 1,500V AC, 1 minute

Between contact circuits - 1,500V AC, 1 minute

(1,000V AC between NO-NC contacts)

Blade Type (RR1BA, RR2BA, RR3B)

Between live and non-live parts - 2,000V AC, 1 minute

Between contact circuit and operating coil - 2,000V AC, 1 minute

Between contact circuits - 2,000V AC, 1 minute

Between contacts of same polarity - 1,000V AC, 1 minute

Frequency Response: 1,800 operations/hour

Temperature Rise: Coil: 153°F (85°C) maximum

Contact: 117°F (65°C) maximum

Vibration Resistance: 0 to 6G (55Hz) maximum

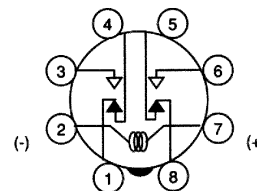
Shock Resistance: 10G minimum

Electrical Life: 500,000 operations (120V, 50/60Hz, 10A)

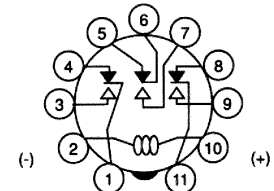
Mechanical Life: 10,000,000 operations minimum

Operating Temperature: -22°F to +158°F (-30°C to 70°)

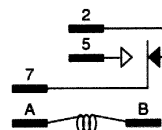
Internal Circuit



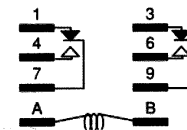
RR2P



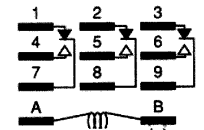
RR3PA



RR1BA



RR2BA



RR3B

