

MINIATURE ENCLOSED INDUSTRIAL RELAY

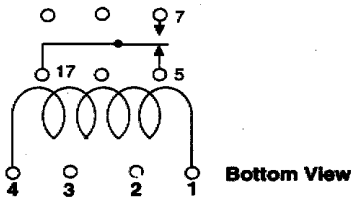
CLASS
67

7
R
E
L
A
S

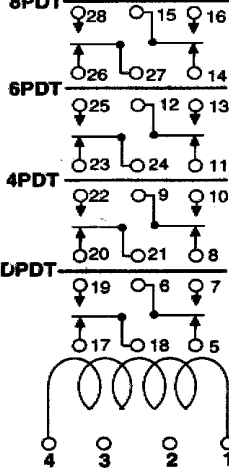
CONTACT MATERIAL: SILVER GOLD OVERLAY
RATED 3 or 5 AMPS @ 32VDC/120VAC

The Class 67 Relays have combination solder/plug-in terminals with a 3-48UNC stud or printed circuit terminals.

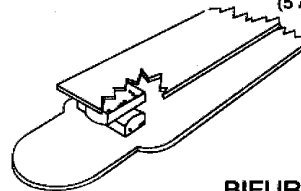
WIRING DIAGRAM
SPDT



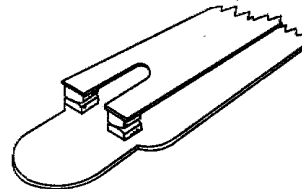
WIRING DIAGRAM
8PDT



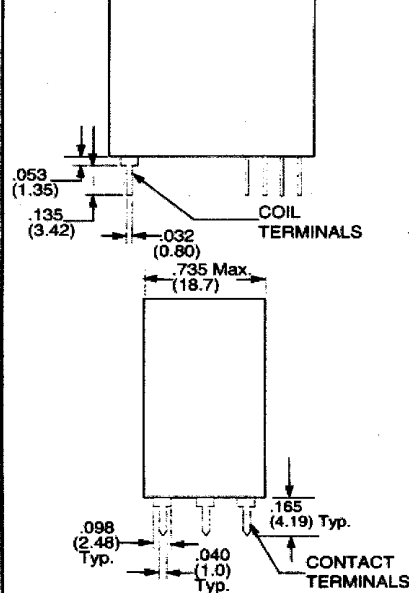
STANDARD CONTACTS
(5 AMP CROSS BAR)



BIFURCATED CONTACTS
(LOW LEVEL APPLICATIONS)

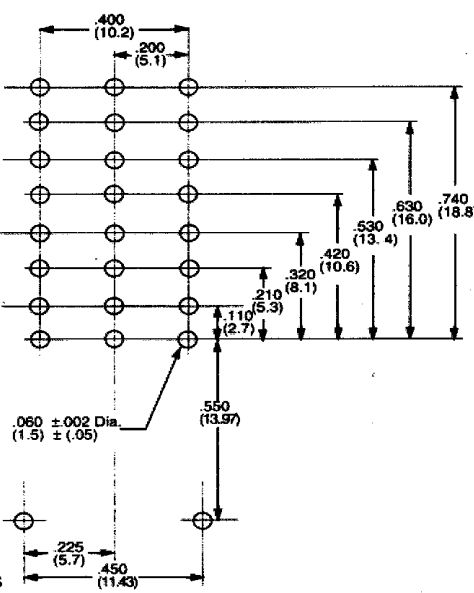


SUGGESTED PRINTED CIRCUIT BOARD LAYOUT
FOR RELAYS WITH PRINTED CIRCUIT TERMINALS



All Contact Terminals are .010 Thick.
All coil terminals are .018 Thick.

SUGGESTED PRINTED CIRCUIT BOARD LAYOUT
FOR SOCKETS WITH PRINTED CIRCUIT TERMINALS



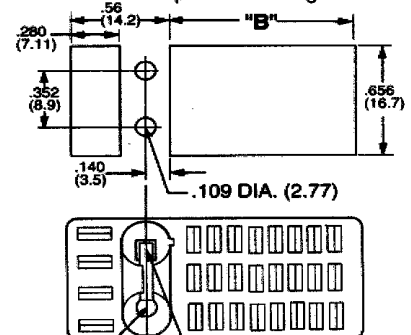
HOLES
.056 +.004
-.000
(1.42 + .10
-.000)

Dimensions shown are in Inches and (Millimeters).

DIMENSIONS

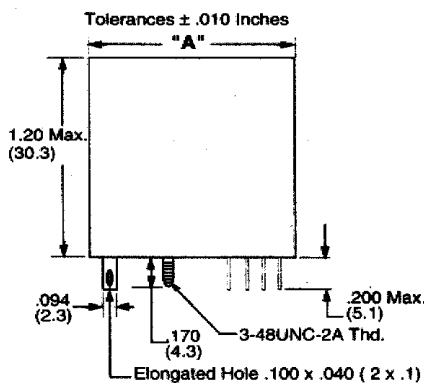
CONTACT CONFIGURATION	"A" DIM.	"B" DIM.
SPDT	.978	.344
DPDT	(24.8)	(8.7)
4PDT	1.156	.562
	(29.4)	(14.3)
6PDT	1.374	.780
	(34.9)	(19.8)
8PDT	1.592	1.000
	(40.4)	(25.4)

CHASSIS CUTOUT
for panel mounting.



USE # 5 SCREW FOR MOUNTING SOCKET

GROUND STRIP FOR 3-48 UN-2A STUD



All Contact Terminals are .010 Thick
all coil terminals are .018 Thick.