

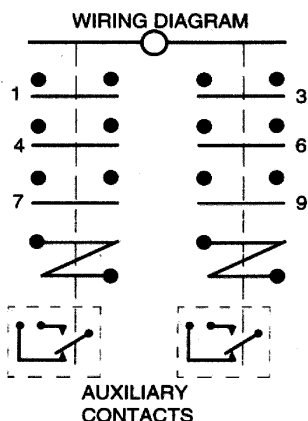
2 COIL MOTOR REVERSING CONTACTOR 1.5 - 7.5HP, 6 POLE

SERIES
A575

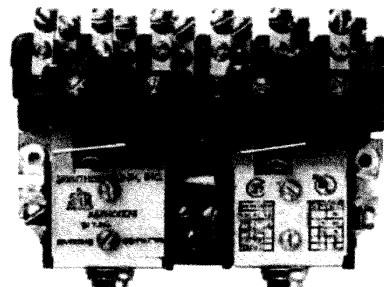
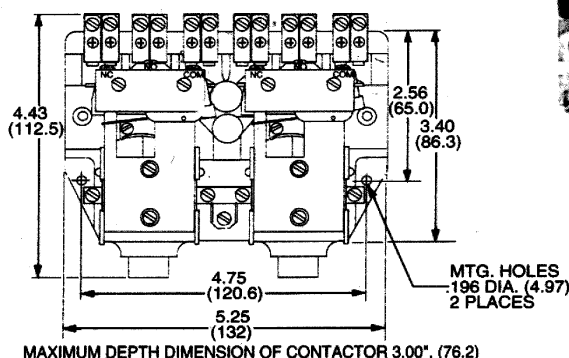
7

R
E
L
A
Y
S

The Series A575 relay is rated to 7.5 HP. Two sets of 3 pole, double-make, N.O. contacts are mechanically interlocked to prevent simultaneous closure. Front mounted auxiliary contacts are available for electrical lockup and lockout. All versions have silver cadmium oxide contacts. The A575 motor reversing contactor is widely used for control of overhead doors, elevators, hoists, machine tools, and other similar devices that requires frequent jogging.



OUTLINE DIMENSIONS
Dimensions shown in Inch and (Millimeters)



CONTACT RATINGS

LOAD	VOLTAGE (60HZ)	PHASE	MOTOR LOADS (HP)	RESISTIVE LOAD (AMPS)
3PST-DM-NO (per pole)	120	1	1-1/2	30
	208/240	1	3	30
	208/240	2-3	5	30
	480/600	2-3	7-1/2	15

DC CONTACTS

LOAD	VOLTAGE (DC)	RESISTIVE LOAD (AMPS)
3PST-DM-NO (per pole)	115	15
	230	2

AUXILIARY CONTACTS

LOAD	VOLTAGE (AC)	RESISTIVE LOAD (AMPS)
1 FORM "A"	120	5
"B" OR "C"	240	5

GENERAL SPECIFICATIONS

COIL

Pull-in Voltage: AC: 85%, DC: 80% of nominal voltage measured at 25°C
Dropout Voltage: 10% of nominal voltage or more @ 25°C
Max: allowed voltage: 110% of nominal voltage
Coil Resistance: ±10% Measured @ 25°C

CONTACTS

Contact Material: Silver Cadmium Oxide.

TIMING

Operate Time: 60 ms Max. @ Nominal Voltage.
Release Time: 30 ms Max. @ Nominal Voltage.

DIELECTRIC STRENGTH

All Mutually Insulated Points: 2500 V rms between all mutually insulated current carrying parts and those parts to ground.
Insulation Resistance: 500 VDC Exceeds 1000 Megohms.

TEMPERATURE

Temperature Rating: -40°C to +50°C @ rated operation.

LIFE EXPECTANCY

Mechanical: 5 Million Operations no load
Electrical: 100,000 Operations @ Rated Load.
250,000 Operations @ 1/2 rated load.

MISCELLANEOUS

Weight: 1 pound, approx..

AC COIL SPECIFICATIONS @ 25°C (22VA)

Nominal Voltage	Resistance Ohms ± 10%	Nominal Current
12	1.00	1.833 AMP
24	5.30	0.917 AMP
*120	92.0	0.183 AMP
240	420	0.920 AMP
440	2100	0.050 AMP
550	3100	0.040 AMP

* AC coil is 120, 50-60HZ

DC COIL SPECIFICATIONS @ 25°C (10 WATT)

Nominal Voltage	Resistance Ohms ± 10%	Nominal Current
12	16.5	0.727
24	58.2	0.412
**120	1,450	0.083
240	4,200	0.055

** DC coil is 110-125 VDC

OPTIONS

ORDERING CODE

Typical Type No. **A575 KXX 90 -24A**

Series

A575, Screw Terminals, 2 coil motor rev. contactor, 1.5 - 7.5 HP

Contact Arrangements

KXX (3PDM-NO., per coil)

Options

1 Form "A" & 1 Form "B" Aux. contacts per coil, Rated 5 Amps - **CODE 74**

1 form "C" Aux. contact per coil Rated 5 Amps. - **CODE 90**

Coil Voltage

AC: 12, 24, 120, 240, 440, 550 (Add "A")

DC: 12, 24, 115-125, 240 (Add "D")

NOTE: CONTACTORS MUST BE MOUNTED IN THE VERTICAL POSITION WITH THE LOAD CONTACTS UP.
Mechanical Interlock omitted