

G7G

Power PCB Relay

Features

- Compact, low-cost power relay capable of switching up to 30 A loads
- PCB coil terminals with QC load terminals; ideal for heavy duty loads
- Class B insulation standard, sealed versions available, Class F versions available
- Typical applications include home appliances, industrial equipment, and HVAC products

Contact Data

Contact ratings

SPST-NO: 30 A, 250 VAC, 28 VDC (Resistive); 15 A, 125 VAC (Resistive); 10 A, 277 VAC (Resistive); 1 HP, 125 VAC; 1 HP, 240 VAC; 5 A, 240 VAC (Tungsten); 6 A, 277 VAC (Ballast)
***SPDT:** 20 A/10 A, 240 VAC, 28 VDC (Resistive); 15 A/15 A, 125 VAC (Resistive); 10 A/6 A, 277 VAC (Resistive); 1 HP/1/2 HP, 125 VAC; 2 HP/1/2 HP, 240 VAC; 5 A/3 A, 125 VAC (Tungsten); 5 A/3 A, 240 VAC (Tungsten); 6 A/3 A, 277 VAC (Ballast)

Maximum operating voltage 250 VAC, 28 VDC

Maximum operating current

SPST-NO: 30 A (AC) 20 A (DC)
SPDT: 20 A/10 A (AC) 20 A/10 A (DC)*

Maximum switching capacity

SPST-NO: 7,500 VA, 840 W
SPDT: 5,000/2,500 VA, 560/280 W*

Minimum permissible load 500 mA at 5 VDC

Note: 1. * NO contact/NC contact

Coil Data (% of rated voltage)

Pickup voltage 75% max.

Dropout voltage 10% min.

Maximum voltage 120%

Characteristic Data

Initial contact resistance 50mΩ max.

Insulation resistance 1,000MΩ min. (at 500 VDC)

Dielectric strength

Between contacts of same pole: 1,500 VAC, 50/60 Hz for 1 minute
Between coil and contacts: 2,500 VAC, 50/60 Hz for 1 minute

Service life

Mechanical: 10,000,000 operations min.
Electrical: 100,000 operations min. at all resistive ratings

Construction Data

Termination PCB+Quick connect terminals

Construction Fully-sealed and unsealed

Weight 1.13oz (32g)

Packaging method Trays

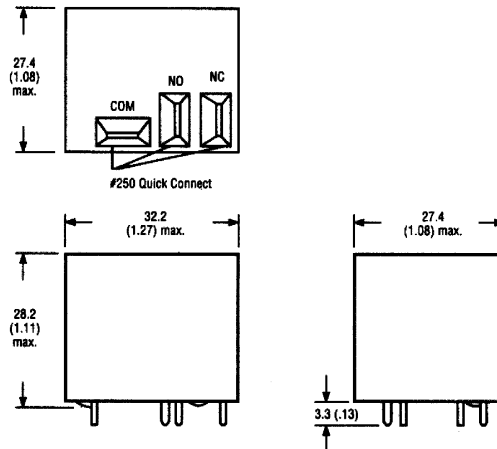


Ordering Information

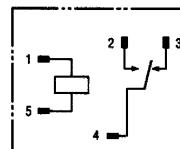
Part number	Rated voltage (V)	Coil res. (Ohms)	Power (mW)	Contact rating	Type
G7G-1A2-CB-DC6	6 DC	40	900	30 A	SPST-NO
	-DC12	12 DC	155	30 A	Unsealed
	-DC24	24 DC	660	30 A	
G7G-1A4-CB-DC6	6 DC	40	900	30 A	SPST-NO
	-DC12	12 DC	155	30 A	Sealed
	-DC24	24 DC	660	30 A	
G7G-1C2-CB-DC6	6 DC	40	900	20 A/10 A*	SPDT
	-DC12	12 DC	155	20 A/10 A*	Unsealed
	-DC24	24 DC	660	20 A/10 A*	
G7G-1C4-CB-DC6	6 DC	40	900	20 A/10 A*	SPDT
	-DC12	12 DC	155	20 A/10 A*	Sealed
	-DC24	24 DC	660	20 A/10 A*	

Note: 1. Other coil voltages available.
 2. Class F coil insulation available.
 3. * NO contact/NC contact

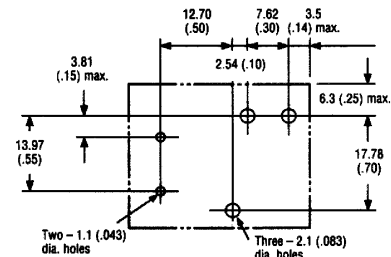
Dimensions [Unit: mm (inch)]



Terminal arrangement/ Internal connections (bottom view)



Mounting holes (bottom view)



Note: 1. For SPST-NO version, remove terminal no. 3.