

MY

General Purpose Relay

Ordering Information (continued)

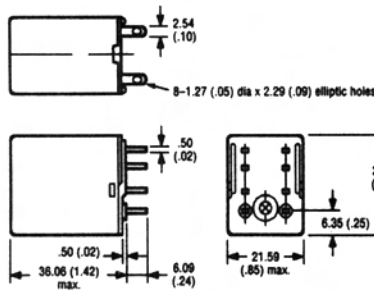
Part number	Rated voltage (V)	Coil res. (Ohms)	Power	Contact rating	Type
MY4N-DC12	12 DC	160	0.9 W	3 A	4PDT
-DC24	24 DC	650	—	3 A	LED
-AC24	24 AC	180	1.2 VA	3 A	Indicator
-AC110/120	110/120 AC	4,430	—	3 A	Plug-in/
-AC220/240	220/240 AC	18,790	—	3 A	Solder
MY4Z-DC12	12 DC	160	0.9 W	3 A	4PDT
-DC24	24 DC	650	—	3 A	Bifurcated.
-AC24	24 AC	180	1.2 VA	3 A	Contact
-AC110/120	110/120 AC	4,430	—	3 A	Plug-in/
-AC220/240	220/240 AC	18,790	—	3 A	Solder

Part number	Rated voltage (V)	Coil res. (Ohms)	Power	Contact rating	Type
MY4ZN-DC12	12 DC	160	0.9 W	3 A	4PDT
-DC24	24 DC	650	—	3 A	Bifurcated
-AC24	24 AC	180	1.2 VA	3 A	Contact LED
-AC110/120	110/120 AC	4,430	—	3 A	Indicator
-AC220/240	220/240 AC	18,790	—	3 A	Plug-in/ Solder
MY2K-US-DC12	12 DC	110/235 [†]	1.3 W	3 A	DPDT
-DC24	24 DC	470/940 [†]	—	3 A	Dual Coil
-AC24	24 AC	320/550 [†]	0.9 VA	3 A	Latching
-AC120	120 AC	8,300/3,000 [†]	—	3 A	Plug-in/ Solder

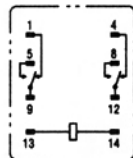
Note: 1. Other coil voltages available
2. † Set Coil/Reset Coil.

Dimensions [Unit: mm (inch)]

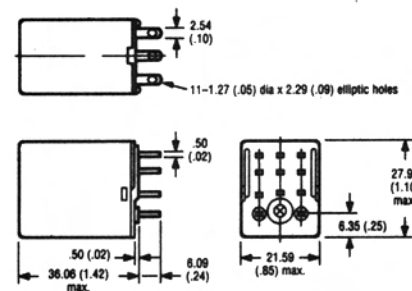
MY2



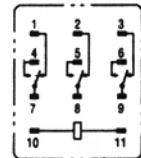
Terminal arrangement (bottom view)



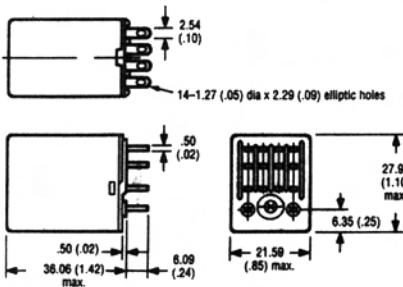
MY3



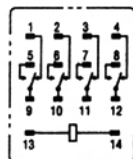
Terminal arrangement (bottom view)



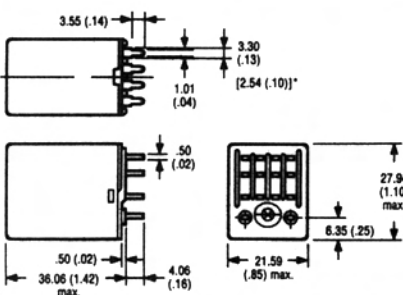
MY4



Terminal arrangement (bottom view)



MY-02



Note: 1. * The above dimension applies to MY4-02.

Mounting holes

