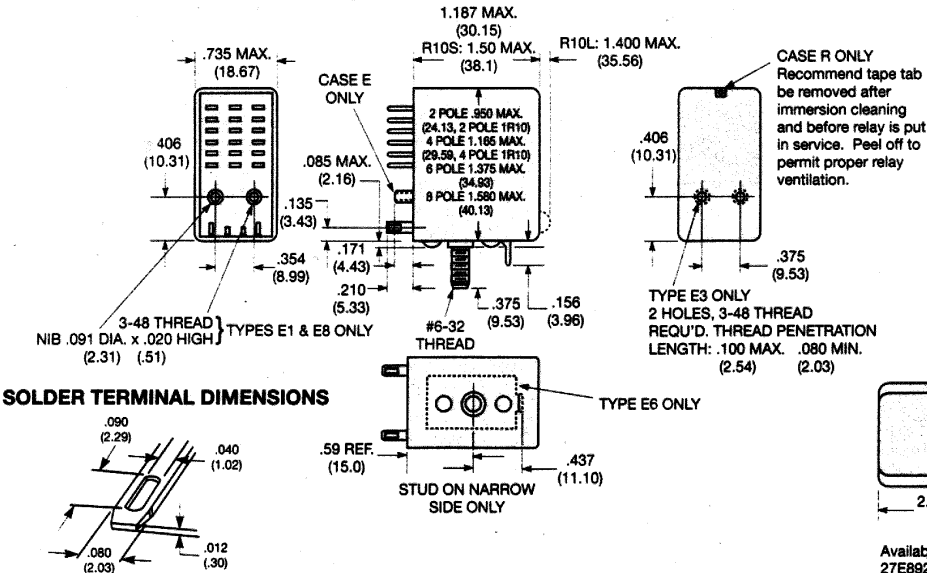


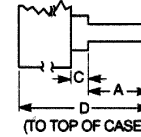
7
RELAYS

OUTLINE DIMENSIONS

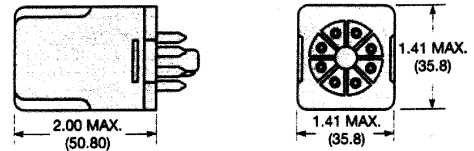


PC TERMINAL DIMENSIONS

| | A | B | C | D | Arrang. |
|-----------|------|------|------|-------|-----------|
| Type 2 | .131 | .050 | .064 | 1.251 | Inline |
| Type 5 | .131 | .050 | .013 | 1.20 | Inline |
| Type 7 | .131 | .040 | .013 | 1.20 | Inline |
| Type 9 | .170 | .040 | .000 | 1.187 | Staggered |
| Thickness | .012 | .012 | .012 | .013 | — |



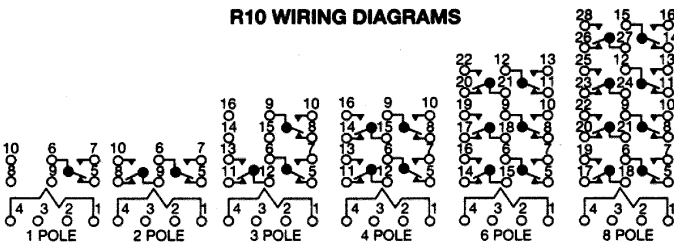
R10-T OUTLINE DIMENSIONS



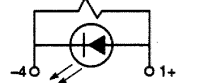
Available screw terminal sockets—27E122, 27E123, 27E891 and 27E892.

WIRING DIAGRAMS (Bottom Views)

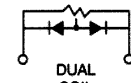
R10 WIRING DIAGRAMS



R10L WIRING DIAGRAM

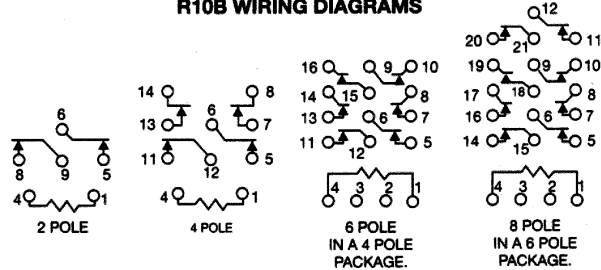


R10-AC WIRING DIAGRAM

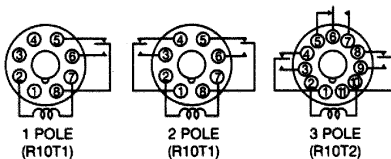


Note: Observe polarity indicated when wiring R10L with LED

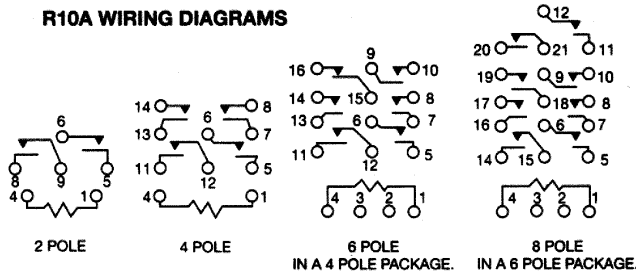
R10B WIRING DIAGRAMS



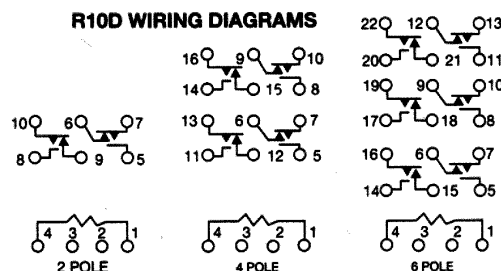
R10-T WIRING DIAGRAMS



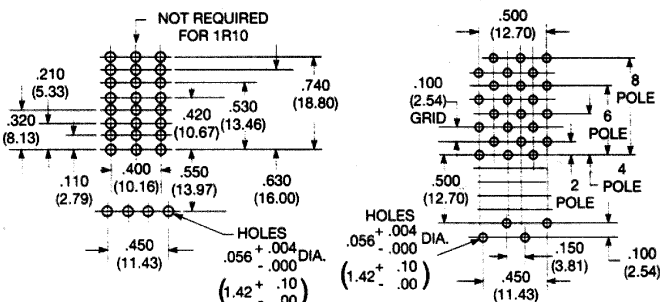
R10A WIRING DIAGRAMS



R10D WIRING DIAGRAMS



SUGGESTED PC BOARD LAYOUT (Component Side of Board)



TERMINAL TYPES E2 & R2

TERMINAL TYPES E9 & R9

SUGGESTED PANEL CUTOUT FOR RELAY OR SOCKET

