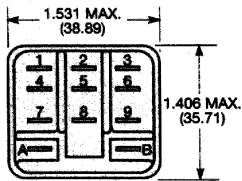


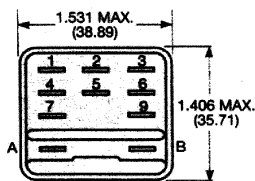
OUTLINE DIMENSIONS (Continued)

RELAY FRONT DIAGRAMS

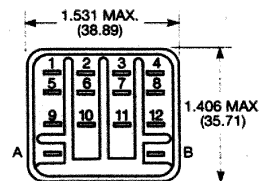
1-3 POLE RELAYS



RELAYS WITH .250" (6.35 mm) TERMINALS

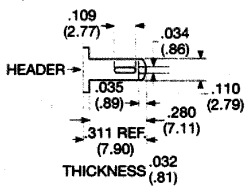


4 POLE RELAYS

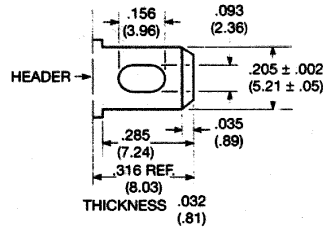


TERMINAL DIMENSIONS

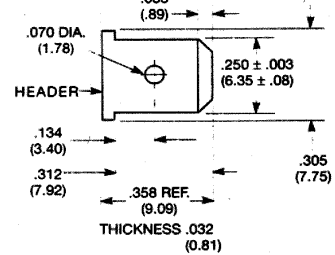
.110" (2.79 mm) QUICK CONNECT



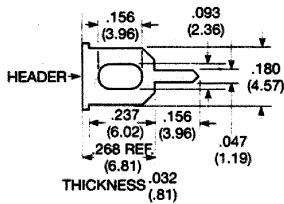
.205" (5.21 mm) QUICK CONNECT



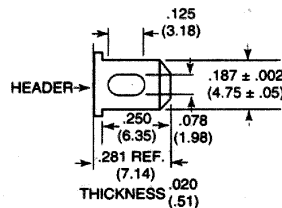
.250" (6.35 mm) QUICK CONNECT



PRINTED CIRCUIT

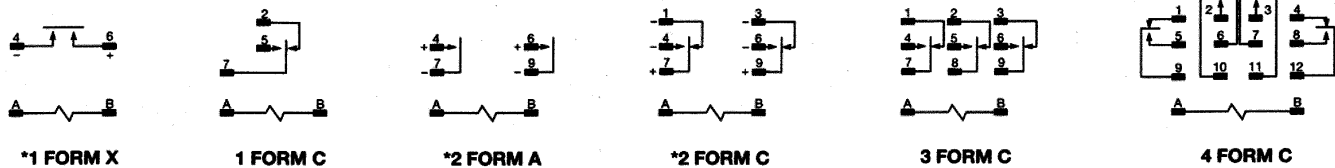


.187" (4.75 mm) QUICK CONNECT



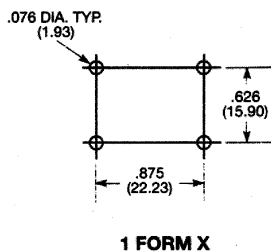
Note: All drawings shown oversized.

WIRING DIAGRAMS

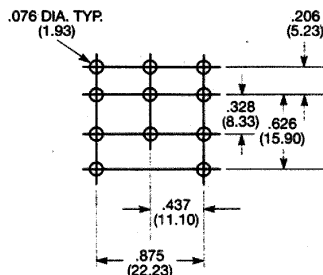


*Recommended Load Polarity for Optimum Arc Suppression.

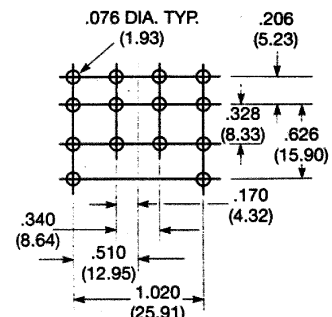
PC BOARD LAYOUTS (Bottom Views)



1 FORM X



3 POLE MODELS



4 POLE MODELS