

L = 1-3/4
W = 1-7/16
H = 1-5/8

NOTE: Standard intermittent duty cycle at nominal voltage is three (3) minutes on and nine (9) minutes off.

D-3HD PULL TYPE

Stock No.	Volts/Type	Duty	Coil	
			Resist. (Ohms)	Power
53732-81	12VDC	Cont.	12.8	11.2W
53732-82	24VDC	Cont.	51.5	11.2W
53732-87	12VDC	Int.	5.3	27W
53732-88	24VDC	Int.	21.4	27W
53733-84	120VAC	Cont.	109	20VA
53733-90	120VAC	Int.	27	115VA

STROKE (INCHES) FORCE (OUNCES)

	1/16	1/8	3/16	1/4	1/2	3/4
DC Cont.	110	72	45	31	10	4
DC Int.	150	124	96	72	25	10
AC Cont.	35	26	23	22	21	13
AC Int.	112	88	80	78	68	40



L = 2
W = 1-7/16
H = 1-5/8

NOTE: Standard intermittent duty cycle at nominal voltage is three (3) minutes on and nine (9) minutes off.

D-4 PULL TYPE

Stock No.	Volts/Type	Duty	Coil	
			Resist. (Ohms)	Power
53717-81	12VDC	Cont.	12.3	11.5W
53717-82	24VDC	Cont.	50.4	11.5W
53717-87	12VDC	Int.	3.0	47.6W
53717-88	24VDC	Int.	12.3	47.6W
53718-84	120VAC	Cont.	133	11.5VA
53718-90	120VAC	Int.	37	60VA

STROKE (INCHES) FORCE (OUNCES)

	1/16	1/8	3/16	1/4	1/2	3/4
DC Cont.	94	66	46	34	14	7
DC Int.	142	122	106	92	52	30
AC Cont.	12	10	9	9	10	13
AC Int.	44	38	34	32	38	46



L = 2-3/16
W = 1-7/16
H = 1-5/8

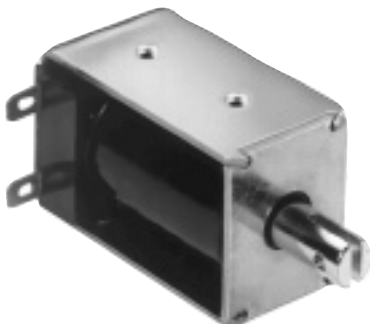
NOTE: Standard intermittent duty cycle at nominal voltage is three (3) minutes on and nine (9) minutes off.

D-4HD PULL TYPE

Stock No.	Volts/Type	Duty	Coil	
			Resist. (Ohms)	Power
53719-81	12VDC	Cont.	12.1	11.7W
53719-82	24VDC	Cont.	49.2	11.7W
53719-87	12VDC	Int.	3.8	38W
53719-88	24VDC	Int.	15.2	38W
53720-84	120VAC	Cont.	72.4	32VA
53720-90	120VAC	Int.	19.1	170VA

STROKE (INCHES) FORCE (OUNCES)

	1/16	1/8	3/16	1/4	1/2	3/4
DC Cont.	116	85	60	42	16	8
DC Int.	160	136	114	98	46	26
AC Cont.	24	20	19	18	21	24
AC Int.	84	72	64	60	66	76



L = 1-27/32
W = 15/16
H = 1-3/16
.187 QUICK CONNECT/
SOLDER TERMINALS

Stock No.	Volts/Type	Duty	Coil	
			Resist. (Ohms)	Power
53736-81	12VDC	Cont.	18	8W
53736-82	24VDC	Cont.	72	8W
53736-87	12VDC	Int.	8	18W
53736-88	24VDC	Int.	32	18W
53738-84	120VAC	Cont.	200	12VA
53738-90	120VAC	Int.	85	42VA