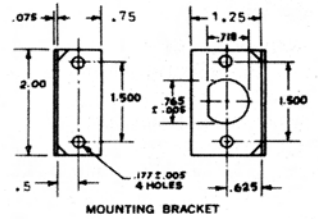
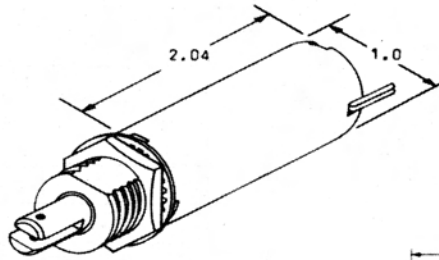




T8X16 - DC

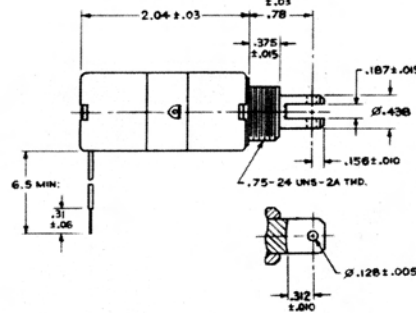
- 22 Ga. wire leads
- Standard/stock DC voltages 12 & 24
- Class "A" insulation
- Push type available specify TP
- Stroke length 0 - 7/8"
- Plunger weight 1.502 oz. (44.5 grams)
- Total weight 5.8 oz. (164 grams)



Coil Voltage	Coil Res. Ω	Duty	Pull at 1/8"	Holding Force	PART NUMBERS
12VDC	9.3	Int.	40.5 oz.	130 oz.	T8X16-I-12D
12VDC	28.3	Cont.	17.7 oz.	105 oz.	T8X16-C-12D
24VDC	36.1	Int.	40.5 oz.	130 oz.	T8X16-I-24D
24VDC	110	Cont.	17.7 oz.	105 oz.	T8X16-C-24D

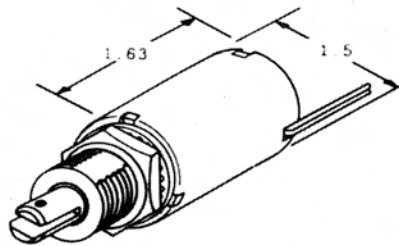
PUSH TYPE

12VDC	9.3	Int.	38.0 oz.	110 oz.	TP8X16-I-12D
12VDC	28.3	Cont.	14.5 oz.	89 oz.	TP8X16-C-12D
24VDC	36.1	Int.	38.0 oz.	110 oz.	TP8X16-I-24D
24VDC	110	Cont.	14.5 oz.	89 oz.	TP8X16-C-24D

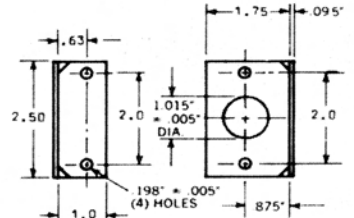


T12X13 - DC

- 22 Ga. wire leads
- Standard/stock DC voltages 12 & 24
- Class "A" insulation
- Push type available specify TP
- Stroke length 0 - 1"
- Plunger weight 1.8 oz. (50 grams)
- Total weight 10.6 oz. (301 grams)



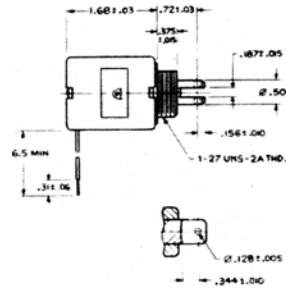
MOUNTING BRACKET



Coil Voltage	Coil Res. Ω	Duty	Pull at 1/8"	Holding Force	PART NUMBERS
12VDC	7.3	Int.	104 oz.	250 oz.	T12X13-I-12D
12VDC	22.8	Cont.	38.4 oz.	183 oz.	T12X13-C-12D
24VDC	28.4	Int.	104 oz.	250 oz.	T12X13-I-24D
24VDC	90.4	Cont.	38.4 oz.	183 oz.	T12X13-C-24D

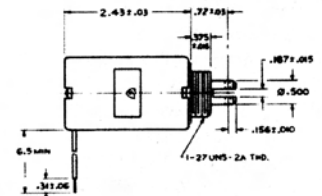
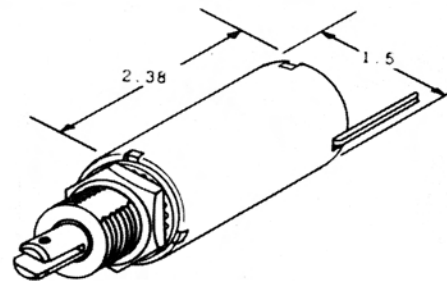
PUSH TYPE

24VDC	28.4	Int.	83 oz.	213 oz.	TP12X13-I-24D
24VDC	90.4	Cont.	30 oz.	155 oz.	TP12X13-C-24D



T12X19 - DC

- 22 Ga. wire leads
- Standard/stock DC voltages 12 & 24
- Class "A" insulation
- Push type available specify TP
- Stroke length 0 - 1"
- Plunger weight 2.2 oz. (62 grams)
- Total weight 14.6 oz. (415 grams)



Coil Voltage	Coil Res. Ω	Duty	Pull at 1/8"	Holding Force	PART NUMBERS
12VDC	5.6	Int.	116 oz.	245 oz.	T12X19-I-12D
12VDC	17.5	Cont.	64.5 oz.	185 oz.	T12X19-C-12D
24VDC	22.1	Int.	116 oz.	245 oz.	T12X19-I-24D
24VDC	68	Cont.	64.5 oz.	185 oz.	T12X19-C-24D

PUSH TYPE

24VDC	22.1	Int.	100 oz.	208 oz.	TP12X19-I-24D
24VDC	68	Cont.	40 oz.	157 oz.	TP12X19-C-24D

