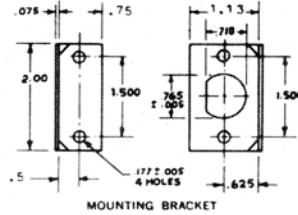
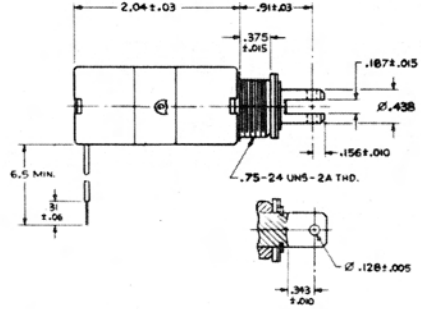
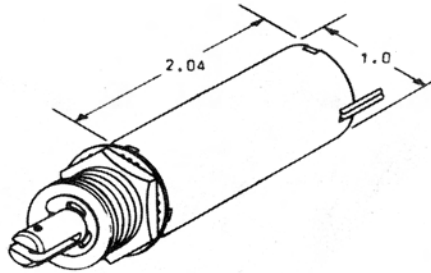




LT8X16 - DC

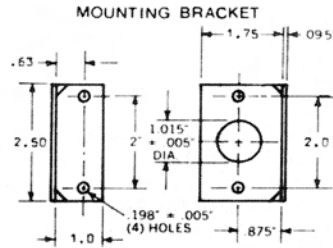
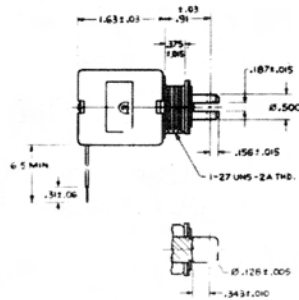
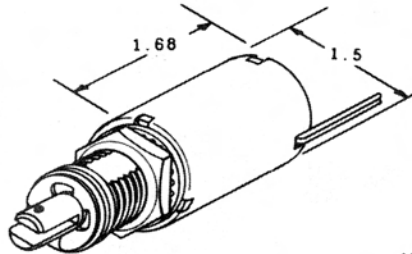
- 22 Ga. wire leads
- Standard/stock DC voltages 12 & 24
- Class "A" insulation
- Stainless steel plunger sleeve
- Anti-bottoming plunger
- Stroke length 0 - 7/8"
- Plunger weight 1.4 oz. (41 grams)
- Total weight 6.4 oz. (181 grams)



Coil Voltage	Coil Res. Ω	Duty	Pull at 1/8"	Holding Force	PART NUMBERS
12VDC	6.2	Int.	55 oz.	68 oz.	LT8X16-I-12D
12VDC	19.3	Cont.	20 oz.	48 oz.	LT8X16-C-12D
24VDC	29.7	Int.	47 oz.	65 oz.	LT8X16-I-24D
24VDC	77.2	Cont.	20 oz.	40 oz.	LT8X16-C-24D

LT12X13 - DC

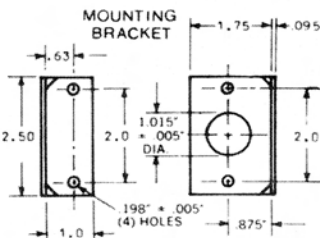
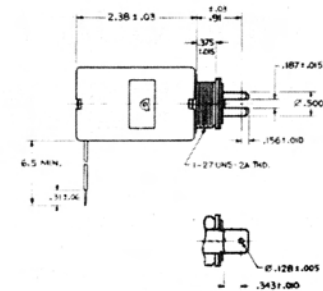
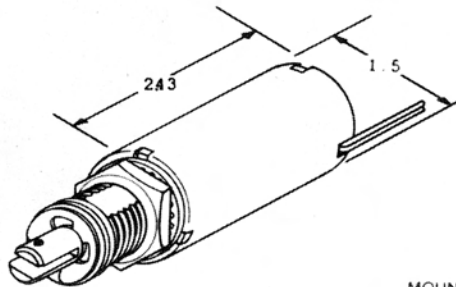
- 22 Ga. wire leads
- Standard/stock DC voltages 12 & 24
- Class "A" insulation
- Stainless steel plunger sleeve
- Anti-bottoming plunger
- Stroke length 0 - 1"
- Plunger weight 2.2 oz. (63 grams)
- Total weight 10.6 oz. (301 grams)



Coil Voltage	Coil Res. Ω	Duty	Pull at 1/8"	Holding Force	PART NUMBERS
12VDC	5.9	Int.	105 oz.	160 oz.	LT12X13-I-12D
12VDC	18.3	Cont.	39 oz.	116 oz.	LT12X13-C-12D
24VDC	22	Int.	105 oz.	160 oz.	LT12X13-I-24D
24VDC	71.2	Cont.	39 oz.	116 oz.	LT12X13-C-24D

LT12X19 - DC

- 22 Ga. wire leads
- Standard/stock DC voltages 12 & 24
- Class "A" insulation
- Stainless steel plunger sleeve
- Anti-bottoming plunger
- Stroke length 0 - 1"
- Plunger weight 2.2 oz. (62 grams)
- Total weight 14.6 oz. (415 grams)



Coil Voltage	Coil Res. Ω	Duty	Pull at 1/8"	Holding Force	PART NUMBERS
12VDC	4.66	Int.	129 oz.	160 oz.	LT12X19-I-12D
12VDC	14.8	Cont.	69 oz.	142 oz.	LT12X19-C-12D
24VDC	18.6	Int.	129 oz.	160 oz.	LT12X19-I-24D
24VDC	71.8	Cont.	55 oz.	125 oz.	LT12X19-C-24D