

CUS SERIES

CUS8 and CUS11

8 and 11-PIN UNITIZED
OCTAL-TYPE SOCKET ASSEMBLIES

SPECIFICATIONS

rating: 10 amps, 300 volts.

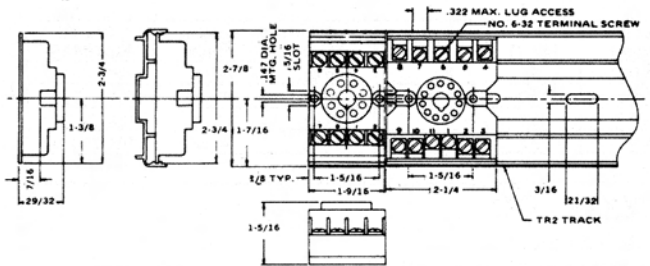
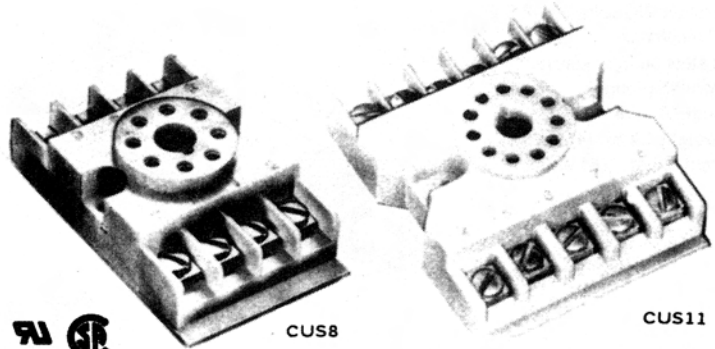
track: TR 2

48" length holds up to 30 CUS8 sockets and 21 CUS11 sockets.

terminals: 6-32 screws with captivated traveling nut.

wire: up to 12AWG wire.

sockets: CUS8 – 8-pin receptacle for 2PDT octal relay or timer; CUS11 – 11-pin receptacle for 3PDT octal relay or timer.



CUS5, CUS12 and CUS16

5, 8 and 11-PIN UNITIZED SQUARE-BASE
RELAY-TYPE SOCKET ASSEMBLIES

SPECIFICATIONS

rating: 15 amps, 250 volts. (CSA rated 15 amps, 125 volts)

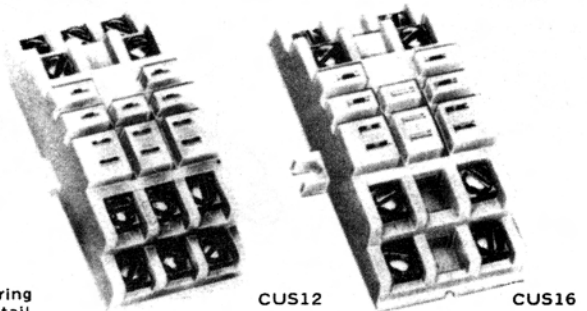
track: TR 3

48" length holds up to 28 sockets.

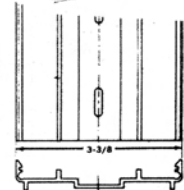
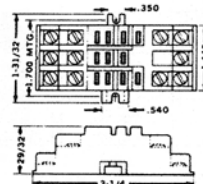
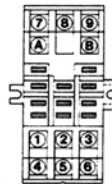
terminals: No. 6-32 screws with captivated traveling nut.

wire: up to No. 14AWG wire.

sockets: CUS12 – 11-pin receptacle for 3PDT square-base barrier-type plug-in relays. CUS16 – 8-pin receptacle for 2PDT square-base, barrier-type plug-in relays. CUS5 – 5-pin receptacle for SPDT square-base, barrier-type plug-in relays.



Wiring
Detail



CUS14 and CUS15

14 and 15-PIN UNITIZED SQUARE-BASE
RELAY-TYPE SOCKET ASSEMBLIES

SPECIFICATIONS

rating: 10 amps, 125 volts. (CSA rated 5 amps, 125 volts)

track: TR 2

48" length holds up to 42 sockets.

terminals: No. 2-56 screws with captivated traveling nut.

wire: up to No. 16AWG wire.

sockets: CUS14 – 14-pin receptacle for 4PDT relay without ground. CUS15 – 15-pin receptacle to accept 4PDT relay with or without ground pin.

