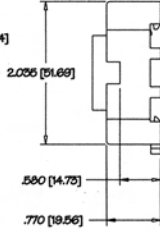
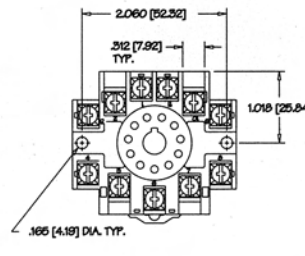
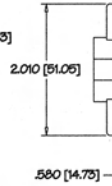
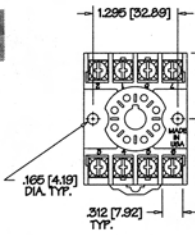


Fig. 1



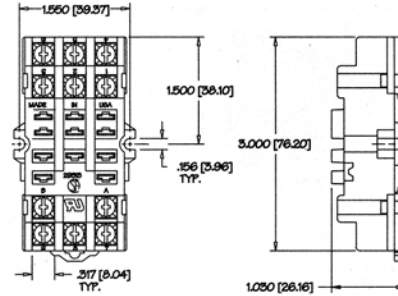
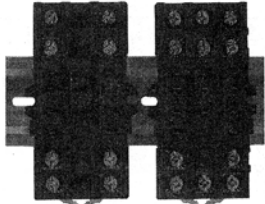
Fig. 2

• UL recognized, File No. E60008
• CSA certified, File No. LR29513



PART NO.	DESCRIPTION	TERMINAL TYPE
OT08	DPDT, 8 Pin Octal (Fig. 1)	Binder Head Screws
OT08-PC	DPDT, 8 Pin Octal (Fig. 1)	Pressure Clamp Screws
OT11	3PDT, 11 Pin Octal (Fig. 2)	Binder Head Screws
OT11-PC	3PDT, 11 Pin Octal (Fig. 2)	Pressure Clamp Screws

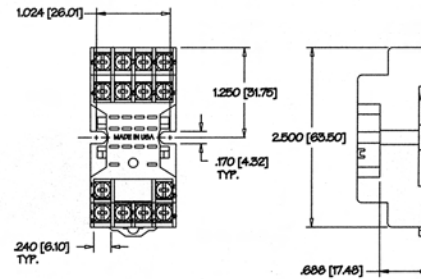
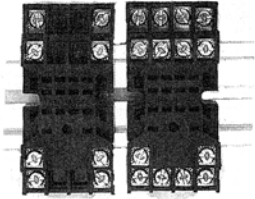
ELECTRICAL RATING: • OT08 - 600 Volts, 10 Amps
• All others - 300 Volts, 10 Amps



PART NO.	DESCRIPTION	TERMINAL TYPE
ST08	DPDT, 8 Pin Blade	Binder Head Screws
ST08-PC	DPDT, 8 Pin Blade	Pressure Clamp Screws
ST11	3PDT, 11 Pin Blade	Binder Head Screws
ST11-PC	3PDT, 11 Pin Blade	Pressure Clamp Screws

ELECTRICAL RATING: • 300 Volts, 10 Amps
• 150 Volts, 15 Amps

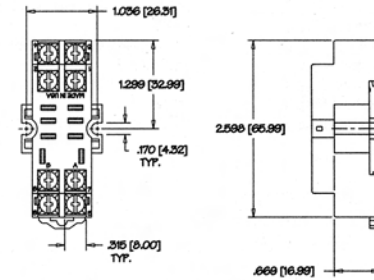
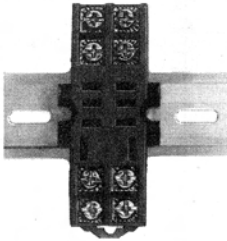
ACCESSORY PART NO.	DESCRIPTION
HDB-8	Hold Down Spring



PART NO.	DESCRIPTION	TERMINAL TYPE
MT08-PC	DPDT, 8 Pin Miniature	Pressure Clamp Screws
MT14-PC	4PDT, 14 Pin Miniature	Pressure Clamp Screws

ELECTRICAL RATING: • 300 Volts, 7 Amps

ACCESSORY PART NO.	DESCRIPTION
HDB-4	Hold Down Spring



PART NO.	DESCRIPTION	TERMINAL TYPE
GT08-PC	DPDT, 8 Pin Midget	Pressure Clamp Screws

ELECTRICAL RATING: • 300 Volts, 10 Amps
• 150 Volts, 15 Amps

ACCESSORY PART NO.	DESCRIPTION
HDB-4	Hold Down Spring

C-103-PM PREPUNCHED ALUMINUM DIN RAIL (1 METER LENGTHS)

C-104-PM PREPUNCHED STEEL DIN RAIL (1 METER LENGTHS)

C-105-PM PREPUNCHED STEEL DIN RAIL (1 METER LENGTHS)

