

Cycle Timers

SERIES C10/C11

For Control of multiple time-related functions in machinery or appliances.

These traditional "repeat cycle timers" consist of one or more load switches actuated by synchronous motor driven cams. The sequence and duration of operation is governed by adjusting the cams and the rotational speed of the cam shaft. If desirable, cut cams can be provided to eliminate the necessity for adjustment. C10 features replaceable switches for ease of field service.

PERFORMANCE DATA

Standard Cycle Times

1 revolution in:

Seconds — 5, 6, 10, 12, 15, 20, 30, 40, 45

Minutes — 1, 1 1/2, 2, 2 1/2, 3, 4, 5, 6, 7 1/2, 10, 15, 20, 30, 40, 45

Hours — 1, 1 1/2, 2, 2 1/2, 3, 4, 5, 6, 7 1/2, 10, 12, 15, 24

Fastest Operating Speeds Recommended with standard motor

Switch arms climbing rise at one time 1 rev. / sec. For each additional switch arm, add two seconds. For higher speeds use higher torque motors and/or special switches.

1	5
2	7

AC Power Timer Size

120V, 60Hz, others available. C11: 1 thru 3 poles. C10: 3 thru 24 poles.

Repeat accuracy: ±0.5% of cycle on continuous cycling.

Setting accuracy on cams: ±3° at any one operating point.
±6° between any two operating points.

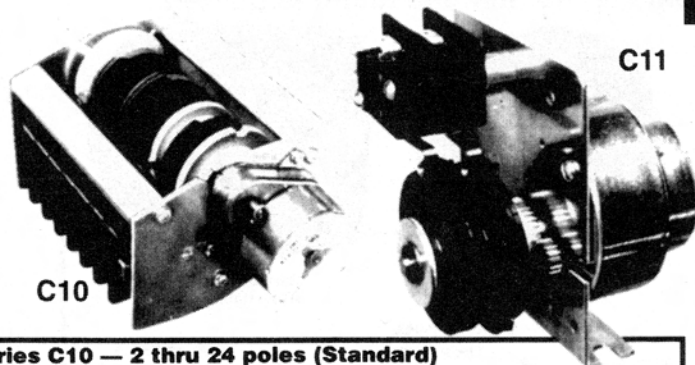
Switch rating: Resistive AC: 10A @ 120V, 240V. 1/3HP @ 120V, 240V.
Resistive DC: 1/2A @ 120V. 1/4A @ 240V.
(15A, 1/2HP switch available.)

Switch terminals: Std — 3/16 in. male; 1/4 in. male optional

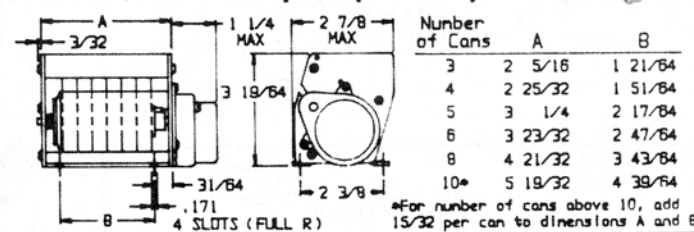
Life expectancy: Mechanical — Over 5 million operations.
Electrical — Over 1 million cycles at 80% of rated load.

Power consumption: Approx. 3 watts. UL Listed, CSA Approved.

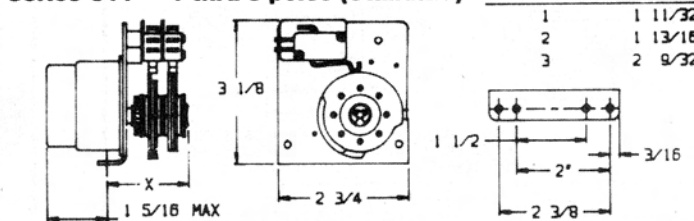
Variations: Non-standard voltages, frequencies. Non-standard time ranges. Shaft extensions, dial and knob.
Hysteresis Synchronous Motor.



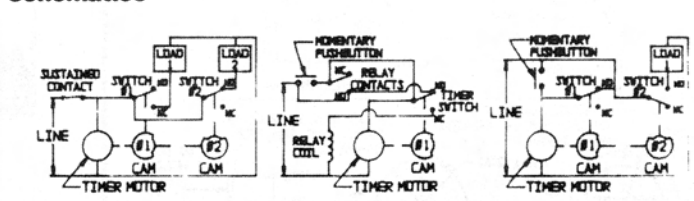
Series C10 — 2 thru 24 poles (Standard)



Series C11 — 1 thru 3 poles (Standard)

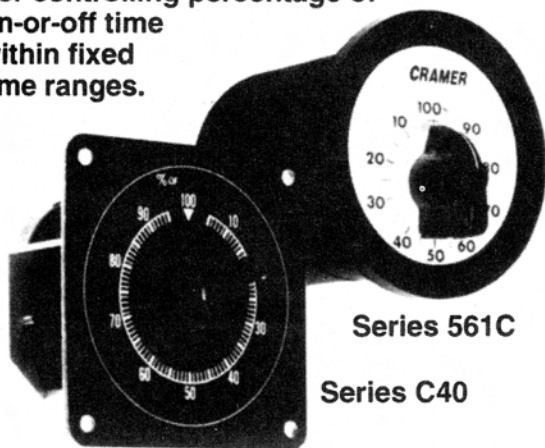


Schematics



Percentage Timers

For controlling percentage of on-or-off time within fixed time ranges.



Applications

- Irrigation control.
- Commercial and industrial heating applications.
- Pump cycling.

PERFORMANCE DATA

	561C	C40
Time Ranges	15, 30, 60 Sec. 2, 5 Min.	15, 30, 60 Sec. 15, 30, 60 Min.
Mounting	Panel Mount	Panel Mount
Settings	4% - 96% or 100% "ON"	5% - 95% or 100% "ON"
Control Rating	20 Amp Resistive	10 Amp Resistive
Repeat Accuracy	2% of Full Scale	1% of Full Scale
AC Power	120V 60 Hz	120V 60 Hz
Optional Power	24, 220V 50 or 60 Hz	24, 220V 50 or 60 Hz

