

Time Ranger™ Programmable Multi-Function Multi-Range Plug In Time Delay Relay

The TR Series 681 Multi-Function *Time Ranger* offers the most common timing functions with up to a 10 hour time delay in one easy-to-program product. Plus it works at both 24VAC/DC and 120VAC input voltages. This flexibility makes it a great product for anyone's inventory. It is the same size as the standard line of Macromatic *Time Ranger* products and uses industry-standard 8 or 11 pin octal sockets. **Output:** 10A @ 240VAC/28VDC **Dimensions:** 3.2" x 2.4" x 1.7"



WIRING/SOCKET DIAGRAMS

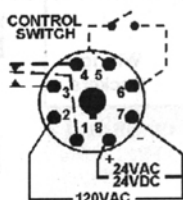


Diagram 43

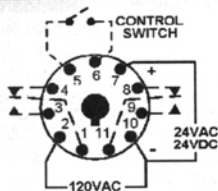


Diagram 44

PRODUCT SELECTION

Field Selectable:	Voltage	Output	Product Number	Wiring/Socket
On Delay Interval On Single Shot Off Delayu On/Off Delay Triggered On Delay Instantaneous On	120V AC & 24V AC/DC	SPDT DPDT	TR-68169 TR-68129	DIAGRAM 43 8 PIN OCTAL 70169-D DIAGRAM 44 11 PIN OCTAL 70170-D

Time Ranger III Digital Set Multi-Function/Multi-Range Time Delay Relay

File No.
701134File No.
E170213

The Time Ranger III Digital-Set Time Delay Relay is a flexible and versatile product for almost any application requiring a timing function. It offers 8 field selectable functions in one product, a programmable time range of 0.1 second to 9,990 hours, and universal AC/DC input voltage through 240V. Push button thumb wheels and an LCD allow for easy and accurate settings of function and time delay. **Output:** 3A DPDT @ 250VAC; 5A DPDT @ 28VDC. **Dimensions:** 1.9" x 1.9" x 3.5"

MOUNTING ACCESSORIES

Type of Mounting	Accessory	Product No.
Panel (Door)	11 Pin Octal Back-Mounted Socket	70300
	Mounting Adapter	70310
	Protective Cover	70320
35mm DIN Track or Surface	11 Pin Octal Socket	70170-D

Product Number: 9816U1

Compact Plug-In Time Delay Relay

Macromatic's line of Compact Time Delay Relays are ideal for applications requiring dependable, small and economical plug-in products. They are available in both ON and OFF Delays, with five separate timing ranges covering 0.2-180 seconds. **Output:** 5A SPDT @ 120VAC, 1/6 Hp @ 120VAC. **Dimensions:** 1.4" x 1.4" x 2.1"

File
E109466

**Timing Range Table (FOR COMPACT PRODUCTS)

Time Delay Range	Suffix Code
0.2 - 5 Sec.	04
0.5 - 15 Sec.	06
1.0 - 30 Sec.	07
2.0 - 60 Sec.	08
6.0 - 180 Sec.	10

PRODUCT SELECTION

Function	Input Voltage	Product Number** <small>Complete Product Number using Timing Range Table</small>	Wiring/Socket
On Delay	120V AC 12V AC/DC 24V AC/DC	SS-6262-** SS-6266-** SS-6268-**	DIAGRAM 5 8 PIN OCTAL 70169-D
Off Delay	120V AC 12V AC/DC 24V AC/DC	SS-8562-** SS-8566-** SS-8568-**	DIAGRAM 6 8 PIN OCTAL 70169-D

WIRING/SOCKET DIAGRAMS

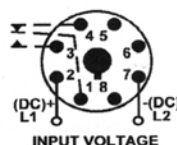


Diagram 5

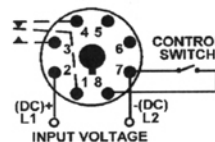


Diagram 6