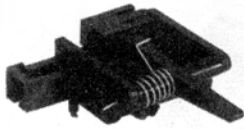
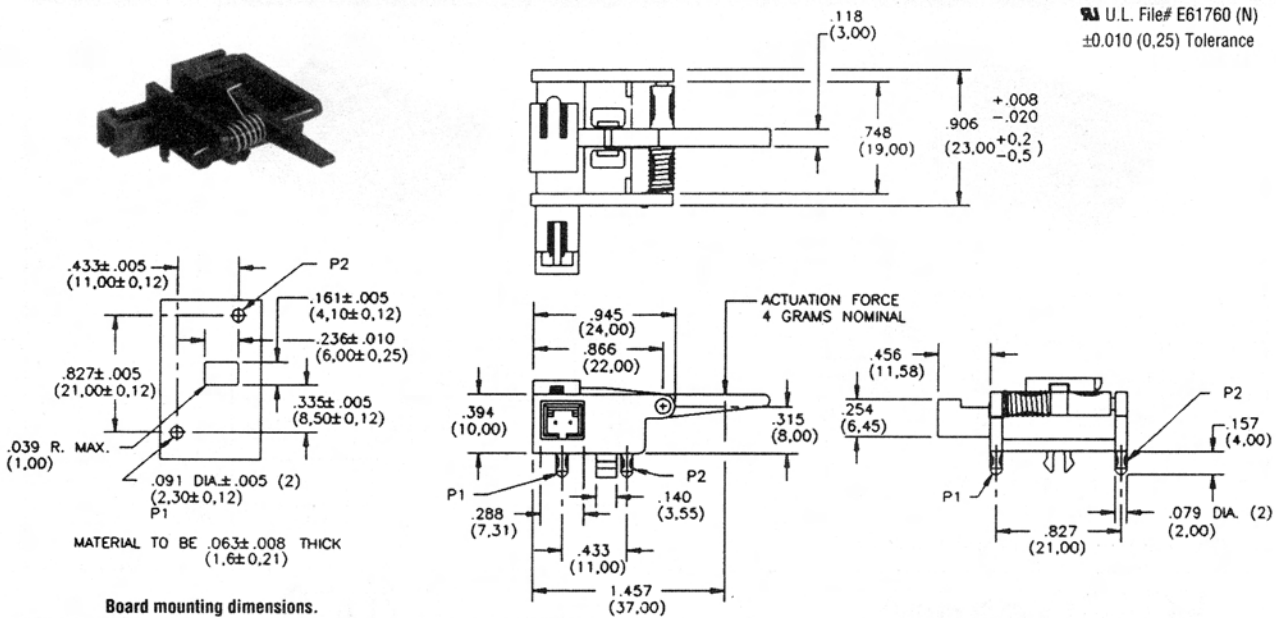


## SENSOR 59220-020



U.L. File# E61760 (N)  
±0.010 (0,25) Tolerance



### AVAILABLE CONTACTS

| Sensor Number | Form B<br>SPST-NC |
|---------------|-------------------|
| 59200-020     |                   |
| 59210-020     |                   |
| 59220-020     |                   |

### ELECTRICAL CHARACTERISTICS

| Contact Rating (1) | Watts. Maximum  | 10            |      |
|--------------------|-----------------|---------------|------|
| Voltage            | Switching       | Vdc. Maximum  | 200  |
|                    | Breakdown       | Vdc. Minimum  | 250  |
| Current            | Switching       | Amps. Maximum | .500 |
| Resistance         | Contact Initial | Ohms. Maximum | .200 |

### OPERATING CHARACTERISTICS

|                               |                                 |             |
|-------------------------------|---------------------------------|-------------|
| Operate Time                  | ms. typical                     | .6          |
| Shock Without False Operation | G's Max., 11ms<br>1/2 sine wave | 100         |
| Operating Temperature         | Degrees Celsius                 | -40 to +105 |

### LOAD/LIFE CHARACTERISTICS (millions of operations) (2)

|                 |                    |
|-----------------|--------------------|
| Load Operations | 5Vdc, 10ma<br>100  |
| Load Operations | 24Vdc, 250ma<br>.2 |

### MUST OPERATE AND RELEASE DISTANCES

| Sensor Type | Actuator | Actuating Position | Must Operate | Must Release |
|-------------|----------|--------------------|--------------|--------------|
| 59200       | —        | Arm Rotation       | 59200-020    |              |
|             |          |                    | < 15 deg.    | > 2 deg.     |
| 59210       | —        | Arm Rotation       | 59210-020    |              |
|             |          |                    | < 15 deg.    | > 2 deg.     |
| 59220       | —        | Arm Rotation       | 59220-020    |              |
|             |          |                    | < 15 deg.    | > 2 deg.     |

(1) Product of switching voltage and current must not exceed wattage rating.

(2) Life may be limited by mechanical wear of arm pivot surfaces.

**Relay Specialties**  
carries  
most major  
brands.  
If you cannot  
find what you  
want, please call  
us for additional  
information.