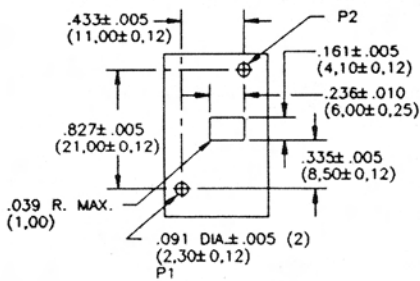


SENSOR 59200-020

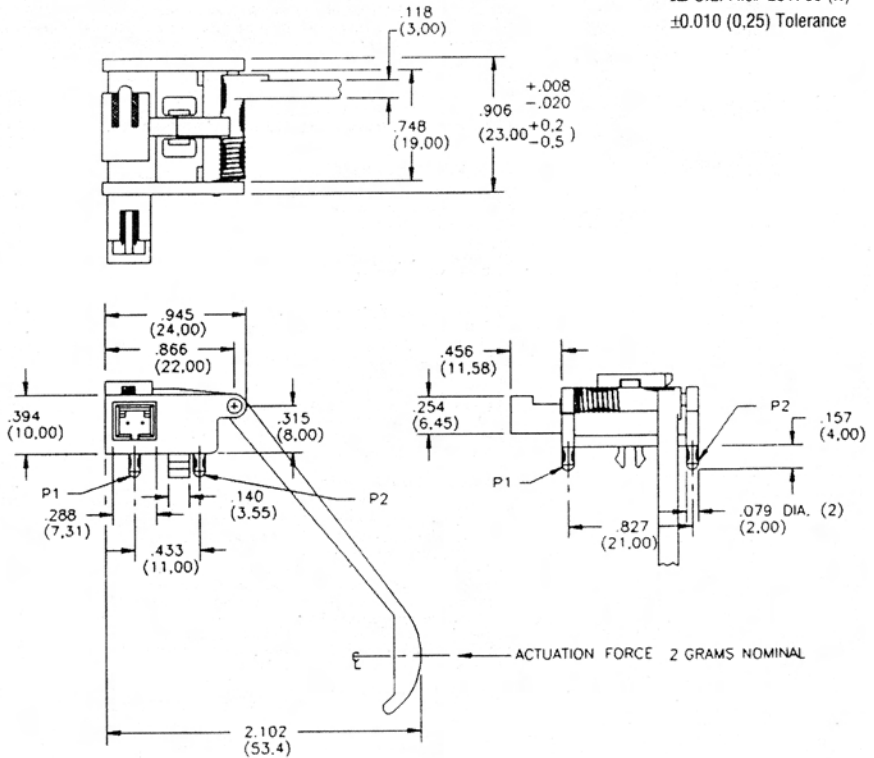


U.L. File# E61760 (N)
±0.010 (0,25) Tolerance

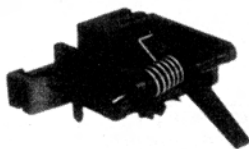


MATERIAL TO BE .063±.008 THICK
(1,6±0,21)

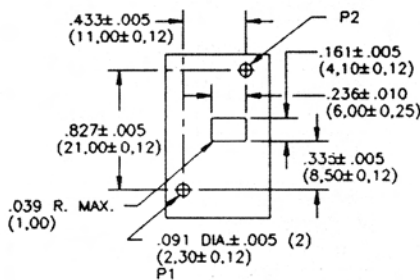
Board mounting dimensions.



59210-020



U.L. File# E61760 (N)
±0.010 (0,25) Tolerance



MATERIAL TO BE .063±.008 THICK
(1,6±0,21)

Board mounting dimensions.

