

Magnetic Sensors Digital Output

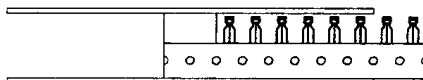
SS400 Series™

11

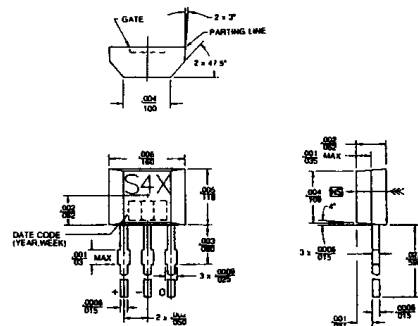
CONTROLS & SENSORS



TAPE AND REEL



MOUNTING DIMENSIONS (For reference only)



SS400 Series position sensors have a thermally balanced integrated circuit over full temperature range. The negative compensation slope is optimized to match the negative temperature coefficient of lower cost magnets. Bipolar, latching and unipolar magnetics are available.

Band gap regulation provides extremely stable operation over 3.8 to 24 VDC supply voltage range. SS400 sensors are capable of continuous 20 mA sinking output, and may be cycled as high as 50 mA maximum.

FEATURES

- 3.8-24 VDC supply voltage
- Digital current sinking output
- 3 pin in-line PCB terminals
- Quad-Hall design virtually eliminates mechanical stress effects
- Temperature compensated magnetics
- Operate/release points can be customized
- High output current capability – 50 mA absolute maximum
- Operate/release points symmetrical around zero gauss (bipolar/latch)
- Operating temperature range of – 55 to + 150°C (– 67 to + 302°F)

SS400 SERIES ORDER GUIDE

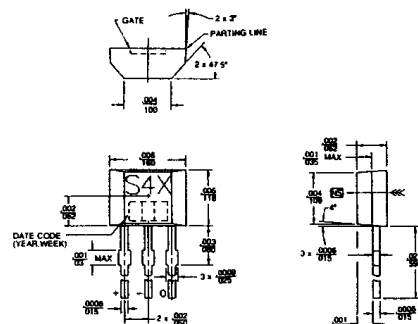
Catalog Listing	Magnetic Type	Supply Current (max.)	Output Voltage (max.)	Output Current (max.)	Magnetic Gauss @ 25°C Max.		
					Op.	Rel.	Dif.
SS411A	Bipolar	10 mA	.40 V	20 mA	60	-60	15
SS413A	Bipolar	10 mA	.40 V	20 mA	140	-140	20
SS441A	Unipolar	10 mA	.40 V	20 mA	115	20	20
SS443A	Unipolar	10 mA	.40 V	20 mA	180	75	25
SS449A	Unipolar	10 mA	.40 V	20 mA	380	245	30
SS461A	Latching	10 mA	.40 V	20 mA	85	-85	50
SS466A	Latching	10 mA	.40 V	20 mA	180	-180	200

Magnetic Sensors Digital Output, Bipolar

SS40 Series



MOUNTING DIMENSIONS (For reference only)



FEATURES

- 4.5 to 24 VDC supply voltage
- Small size (.160" x .118")
- Reverse power polarity protection
- Current sinking output
- Sensitive magnetic characteristics
- Operating speed from 0 to over 100 kHz
- Operating temperature range: –55° to 150°C

SS40 SERIES ORDER GUIDE

Catalog Listing	Magnetic Type	Supply Current (max.)	Output Voltage (max.)	Output Current (max.)	Magnetic Gauss @ 25°C Typ.		
					Op.	Rel.	Dif.
SS41	Bipolar	8.7 mA	0.40 mA	20 mA	40	-40	80
SS46	Latching	8.7 mA	0.40 mA	10 mA	100	-100	200