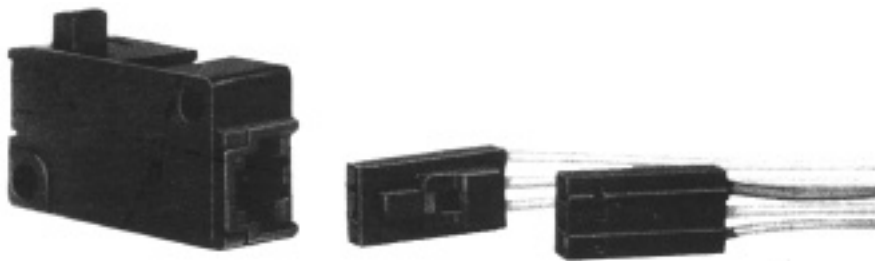


Hall Effect Switches Mechanically Operated

VX Series

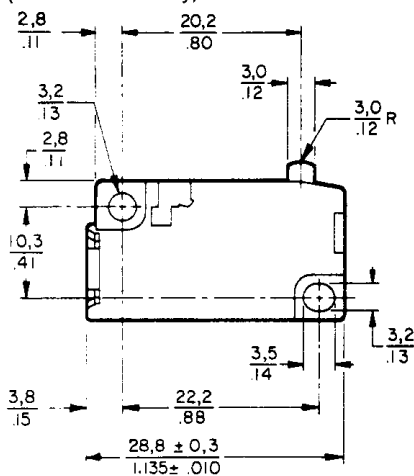
11

CONTROLS & SENSORS



TYPICAL DIMENSIONS

(For reference only)



FEATURES

- Hall effect sensor operated by magnet in plunger
- Low force operation
- 4.5 to 24 VDC supply voltage
- -40°C to +70°C operating temperature
- Direct interface to solid state circuits
- Reverse voltage protection
- Digital current sinking, normally high or normally low output (10 mA)
- Wide variety of actuators . . . uses all standard MICRO SWITCH V3 levers*
- Industry standard mounting holes
- No external terminals . . . uses standard keyed and locking plug-in connectors

Termination

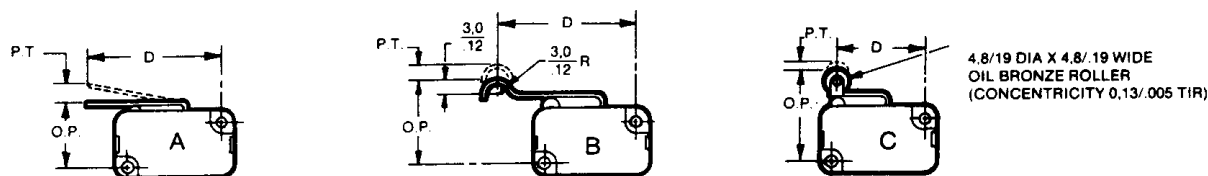
Terminal pins accept connectors (not furnished).

1. AMP 102241-1
MICRO SWITCH part number:
VX1A — connector & receptacle unassembled.
VX1A-01 — connector & receptacle pre-assembled with 5.4", 24 gauge lead wires.

VX SERIES ORDER GUIDE

Catalog Listing		Operating Force Ounces	Max. Free Position	Operating Point	Overtravel (Min.)	Differential Travel (Max.)
Normally High	Normally Low					
VX10	VX11	.35 +.18 -.14	.645	.580 ± .02	.040	.014
VX80	VX81	3.0 ± .88				

Actuating lever examples.



SERVICE

Is Not Just a Word.
It is a Promise.