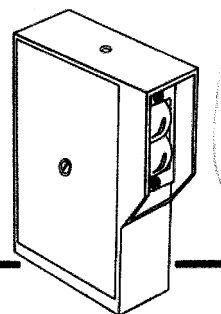
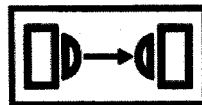


## Heavy Duty

## Photoelectric Sensors

## Thru-Beam & Fiber Optic



- **Modulated LED**
- **Choice of Outputs**
- **Diecast Aluminum Housing Epoxy Coated**
- **Tri-Color LED Indicator**
- **Optional Plug-In Time Delays**
- **400 Ft. Range Thru-Beam**
- **Sealed Heated Optics Thru-Beam**
- **NEMA 3, 4, 12 & 13 Design**
- **-20°C to +70°C**

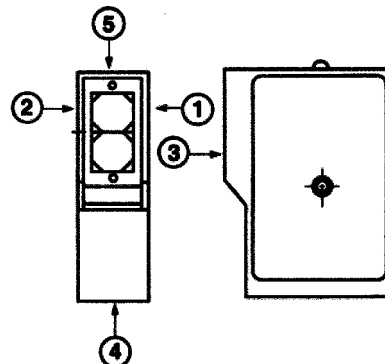
These beefed-up sensors are smart as well as tough. Die cast aluminum housings and totally sealed optics help make them ideal for severe environments. All models use a modulated infrared LED emitter and receiver to ignore ambient light. Plug-in time delay modules offer wide flexibility in application options.

Designed for harsh industrial environments, the EP100 Series is especially equipped to alert you to potential problems. When other sensors run into alignment or dirty optic problems, you don't know about it until they fail. The EP100 uses a unique "tri-color" LED to indicate impending problems. When the LED glows:

- Green — stable operation  
    >70% reflected signal strength
- Yellow — marginal operation  
    40-70% reflected signal strength
- Red — insufficient reflected signal

### Target Repeatability

For best repeatability, it is recommended to have target travel in direction (1) or (2). Traveling toward lens (3) will result in slightly higher tolerance on switch point. It is not recommended to have target travel in direction (4) and (5).



Supply Voltage	Power Consumption	Output Circuit Type	Thru-Beam		Fiber Optic	Output Rating	Response Time On/Off	Maximum Switching Frequency	Leakage Current
			Emitter	Receiver					
110/220 VAC	3.5 VA	—	EP120-12501	—	—	—	—	—	—
24 VDC ± 10%	35 mA	—	EP120-15501	—	—	—	—	—	—
<b>RELAY OUTPUTS</b>									
120 VAC	1.0 VA	DPDT	—	—	EP140-12001	5A Resistive @ 250 VAC or 30 VDC	20ms/25ms	25 Hz	—
110/220 VAC	4.5 VA	SPDT	—	EP120-12701	—	50W - 250 VDC 60 VA - 250 VAC	30ms/150ms	6 Hz	—
11-30 VDC	70 mA	DPDT	—	—	EP140-15001	5A Resistive @ 250 VAC or 30 VDC	20ms/25ms	20 Hz	—
24 VDC ± 10%	100 mA	SPDT**	—	EP120-15701	—	50W - 250 VDC 60 VA - 250 VAC	—	20 Hz	—
<b>TRANSISTOR OUTPUTS</b>									
11-30 VDC	70 mA	NPN	—	—	EP140-15201	25 mA @ 40 VDC	6ms/10ms	60 Hz	—
24 VDC ± 10%	100 mA	PNP**	—	EP120-15701	—	100 mA	—	100 Hz	—
<b>TRIAC OUTPUTS</b>									
120 VAC	1.0 VA	SPST	—	—	EP140-12001*	.05-1.5 A @ 90-240 VAC	6ms/40ms	20 Hz	5mA
11-30 VDC	70 mA	SPST	—	—	EP140-15001	.05-1.5 A @ 90-240 VAC	6ms/40ms	20 Hz	5mA