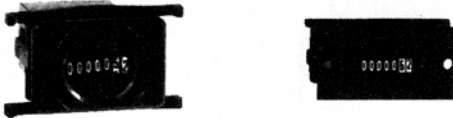


Model 711 / 731

Features

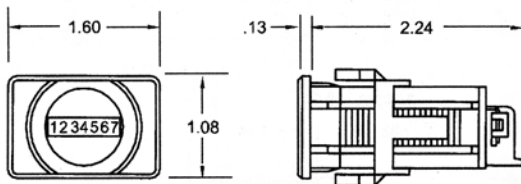
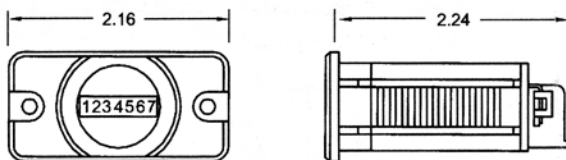
Compact, 7 figure, AC or DC hourmeters, ideal where panel space is limited. Synchronous motor AC and quartz controlled DC insure accuracy. Both are light-weight, and come in a variety of styles and mounting choices.

Specifications

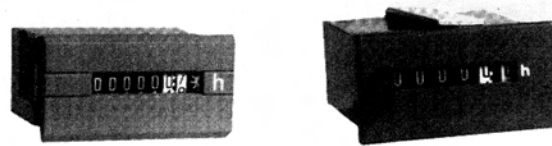
Figures	7 figures, magnified to .14" high 99,999.99 hours (AC), 999,999.9 hours (DC)
Reset	Non-reset
Voltages	24, 115, 230VAC (+/- 10%), 50 or 60Hz.; 10 - 50VDC
Power	2 watts (AC), .75 watts maximum (DC)
Mounting	Panel
Termination	1/4" spade terminals with screws (AC) 1/4" spade terminals (DC)
Temp. Range	-13°F to +185°F
Approvals	UL Recognized & CSA Certified (AC only), CE Approved
Weight	2 oz.
Options	Lead wires, 3-hole or SAE flush mount, case size, terminations

Models	Description
711-0113	115VAC/60Hz., Flush mount, 1.45" x .87" panel cutout
711-0114	24VAC/60Hz., Flush mount, 1.45" x .87" panel cutout
711-0120	115VAC/60Hz., Flush mount, 1.45" x .95" panel cutout
711-0130	115VAC/60Hz., 2-hole rectangle, 1.45" x .87" panel cutout
711-0131	230VAC/60Hz., 2-hole rectangle, 1.45" x .87" panel cutout
711-0132	24VAC/60Hz., 2-hole rectangle, 1.45" x .87" panel cutout
711-0133	115VAC/50Hz., 2-hole rectangle, 1.45" x .87" panel cutout
711-0134	230VAC/50Hz., 2-hole rectangle, 1.45" x .87" panel cutout

731-0040	10-50VDC, 2-hole rectangle, 1.45" x .87" panel cutout
731-0041	10-50VDC, Flush mount, 1.45" x .87" panel cutout

Dimensions
FLUSH MOUNT

2-HOLE MOUNT


Mounting holes: .15" Dia.

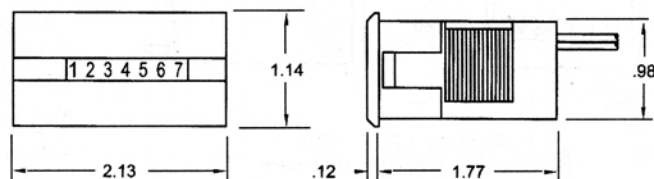
Model 711

Features

A rectangular style AC hourmeter designed to complement existing meters in control panels. Available in 6 figure reset or 7 figure non-reset. The non-reset model incorporates a retaining clip to lock into panel, while the reset version has a metal bracket and screw.

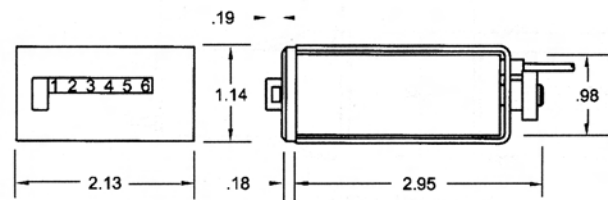
Specifications

Figures	6 figure (reset) or 7 figure (non-reset), .19" high 9,999.99 Hours. (reset version) 99,999.99 Hours. (non-reset models)
Reset	Push-button, or non-reset
Voltages	115VAC (+/- 10%), 50 or 60 Hz.
Power	2 watts (nominal)
Mounting	Panel (mounting hardware included)
Termination	19" wire leads
Temp. Range	-4°F to +158°F
Approvals	UL Recognized, CSA Certified, CE Approved
Weight	2 oz.
Options	Other voltages

Models	Description
711-0019	115VAC/60Hz., reset, 9,999.99 hrs., 15" wire leads
711-0020	115VAC/60Hz., non-reset, 99,999.99 hrs., 15" wire leads
711-0041	115VAC/50Hz., non-reset, 99,999.99 hrs., 15" wire leads

Dimensions
NON-RESET


Panel cutout: 1.98" x .99"

RESET


Panel cutout: 1.98" x .99"