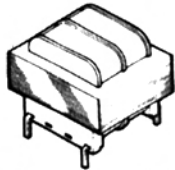


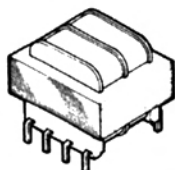
"SIDE WINDER" SPLIT BOBBIN PC MOUNT POWER TRANSFORMERS

Case style, SW or DSW. UL recognized (E68100) CSA certified (LR67965).

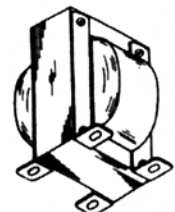
Secondary Ratings		Size, Inches H x W x L	115 V Primary	115/230 V Primary
Series	Parallel		Mfr. No.	Mfr. No.
10.0 VCT at 0.11 A 10.0 VCT at 0.25 A 10.0 VCT at 0.6 A 10.0 VCT at 1.2 A 10.0 VCT at 2.0 A	5.0 V at 0.22 A 5.0 V at 0.5 A 5.0 V at 1.2 A 5.0 V at 2.4 A 5.0 V at 4.0 A	1 5/16 x 1 1/8 x 1 3/8 1 3/16 x 1 1/8 x 1 3/8 1 5/16 x 1 1/8 x 1 3/8 1 7/16 x 1 1/8 x 1 3/8 1 7/16 x 1 1/8 x 2 1/4	SW-210 SW-310 SW-410 SW-510 SW-610	DSW-210 DSW-310 DSW-410 DSW-510 DSW-610
12.6 VCT at 0.09 A 12.6 VCT at 0.2 A 12.6 VCT at 0.5 A 12.6 VCT at 1.0 A 12.6 VCT at 1.6 A	6.3 V at 0.18 A 6.3 V at 0.4 A 6.3 V at 1.0 A 6.3 V at 2.0 A 6.3 V at 3.2 A	1 5/16 x 1 1/8 x 1 3/8 1 3/16 x 1 1/8 x 1 3/8 1 5/16 x 1 1/8 x 1 3/8 1 7/16 x 1 1/8 x 1 3/8 1 7/16 x 1 1/8 x 2 1/4	SW-212 SW-312 SW-412 SW-512 SW-612	DSW-212 DSW-312 DSW-412 DSW-512 DSW-612
16.0 VCT at 0.07 A 16.0 VCT at 0.15 A 16.0 VCT at 0.4 A 16.0 VCT at 0.8 A 16.0 VCT at 1.25 A	8.0 V at 0.14 A 8.0 V at 0.3 A 8.0 V at 0.8 A 8.0 V at 1.6 A 8.0 V at 2.5 A	1 5/16 x 1 1/8 x 1 3/8 1 3/16 x 1 1/8 x 1 3/8 1 5/16 x 1 1/8 x 1 3/8 1 7/16 x 1 1/8 x 1 3/8 1 7/16 x 1 1/8 x 2 1/4	SW-216 SW-316 SW-416 SW-516 SW-616	DSW-216 DSW-316 DSW-416 DSW-516 DSW-616
20.0 VCT at 0.055 A 20.0 VCT at 0.12 A 20.0 VCT at 0.3 A 20.0 VCT at 0.6 A 20.0 VCT at 1.0 A	10.0 V at 0.11 A 10.0 V at 0.24 A 10.0 V at 0.6 A 10.0 V at 1.2 A 10.0 V at 2.0 A	1 5/16 x 1 1/8 x 1 3/8 1 3/16 x 1 1/8 x 1 3/8 1 5/16 x 1 1/8 x 1 3/8 1 7/16 x 1 1/8 x 1 3/8 1 7/16 x 1 1/8 x 2 1/4	SW-220 SW-320 SW-420 SW-520 SW-620	DSW-220 DSW-320 DSW-420 DSW-520 DSW-620
24.0 VCT at 0.045 A 24.0 VCT at 0.1 A 24.0 VCT at 0.25 A 24.0 VCT at 0.5 A 24.0 VCT at 0.8 A	12.0 V at 0.09 A 12.0 V at 0.2 A 12.0 V at 0.5 A 12.0 V at 1.0 A 12.0 V at 1.6 A	1 5/16 x 1 1/8 x 1 3/8 1 3/16 x 1 1/8 x 1 3/8 1 5/16 x 1 1/8 x 1 3/8 1 7/16 x 1 1/8 x 1 3/8 1 7/16 x 1 1/8 x 2 1/4	SW-224 SW-324 SW-424 SW-524 SW-624	DSW-224 DSW-324 DSW-424 DSW-524 DSW-624
28.0 VCT at 0.04 A 28.0 VCT at 0.085 A 28.0 VCT at 0.2 A 28.0 VCT at 0.42 A 28.0 VCT at 0.7 A	14.0 V at 0.08 A 14.0 V at 0.17 A 14.0 V at 0.4 A 14.0 V at 0.84 A 14.0 V at 1.4 A	1 5/16 x 1 1/8 x 1 3/8 1 3/16 x 1 1/8 x 1 3/8 1 5/16 x 1 1/8 x 1 3/8 1 7/16 x 1 1/8 x 1 3/8 1 7/16 x 1 1/8 x 2 1/4	SW-228 SW-328 SW-428 SW-528 SW-628	DSW-228 DSW-328 DSW-428 DSW-528 DSW-628
32.0 VCT at 0.035 A 32.0 VCT at 0.075 A 32.0 VCT at 0.188 A 32.0 VCT at 0.375 A 32.0 VCT at 0.625 A	16.0 V at 0.07 A 16.0 V at 0.15 A 16.0 V at 0.376 A 16.0 V at 0.750 A 16.0 V at 1.25 A	1 5/16 x 1 1/8 x 1 3/8 1 3/16 x 1 1/8 x 1 3/8 1 5/16 x 1 1/8 x 1 3/8 1 7/16 x 1 1/8 x 1 3/8 1 7/16 x 1 1/8 x 2 1/4	SW-232 SW-332 SW-432 SW-532 SW-632	DSW-232 DSW-332 DSW-432 DSW-532 DSW-632
36.0 VCT at 0.03 A 36.0 VCT at 0.065 A 36.0 VCT at 0.17 A 36.0 VCT at 0.35 A 36.0 VCT at 0.55 A	18.0 V at 0.06 A 18.0 V at 0.13 A 18.0 V at 0.34 A 18.0 V at 0.7 A 18.0 V at 1.1 A	1 5/16 x 1 1/8 x 1 3/8 1 3/16 x 1 1/8 x 1 3/8 1 5/16 x 1 1/8 x 1 3/8 1 7/16 x 1 1/8 x 1 3/8 1 7/16 x 1 1/8 x 2 1/4	SW-236 SW-336 SW-436 SW-536 SW-636	DSW-236 DSW-336 DSW-436 DSW-536 DSW-636
48.0 VCT at 0.023 A 48.0 VCT at 0.05 A 48.0 VCT at 0.125 A 48.0 VCT at 0.25 A 48.0 VCT at 0.4 A	24.0 V at 0.046 A 24.0 V at 0.1 A 24.0 V at 0.25 A 24.0 V at 0.5 A 24.0 V at 0.8 A	1 5/16 x 1 1/8 x 1 3/8 1 3/16 x 1 1/8 x 1 3/8 1 5/16 x 1 1/8 x 1 3/8 1 7/16 x 1 1/8 x 1 3/8 1 7/16 x 1 1/8 x 2 1/4	SW-248 SW-348 SW-448 SW-548 SW-648	DSW-248 DSW-348 DSW-448 DSW-548 DSW-648
56.0 VCT at 0.02 A 56.0 VCT at 0.045 A 56.0 VCT at 0.11 A 56.0 VCT at 0.22 A 56.0 VCT at 0.35 A	28.0 V at 0.04 A 28.0 V at 0.09 A 28.0 V at 0.22 A 28.0 V at 0.44 A 28.0 V at 0.7 A	1 5/16 x 1 1/8 x 1 3/8 1 3/16 x 1 1/8 x 1 3/8 1 5/16 x 1 1/8 x 1 3/8 1 7/16 x 1 1/8 x 1 3/8 1 7/16 x 1 1/8 x 2 1/4	SW-256 SW-356 SW-456 SW-556 SW-656	DSW-256 DSW-356 DSW-456 DSW-556 DSW-656
120 VCT at 0.01 A 120 VCT at 0.02 A 120 VCT at 0.05 A 120 VCT at 0.1 A 120 VCT at 0.16 A	60.0 V at 0.02 A 60.0 V at 0.04 A 60.0 V at 0.1 A 60.0 V at 0.2 A 60.0 V at 0.32 A	1 5/16 x 1 1/8 x 1 3/8 1 3/16 x 1 1/8 x 1 3/8 1 5/16 x 1 1/8 x 1 3/8 1 7/16 x 1 1/8 x 1 3/8 1 7/16 x 1 1/8 x 2 1/4	SW-2120 SW-3120 SW-4120 SW-5120 SW-6120	DSW-2120 DSW-3120 DSW-4120 DSW-5120 DSW-6120



Mtg. Style "SW"



Mtg. Style "DSW"



Mtg. Style "NV"

POWER SUPPLY TRANSFORMERS

For peripheral computer accessories. Produces positive and negative regulated DC voltages for op-amps and separate 5 to 6 volts for logic circuits. Terminations are lugs and transformers are rated to 105°C. Primaries are for 120 volts, 50-60 Hertz. Electrostatic shields are grounded internally to the core.

Mfr. No.	Case Style	Ratings		Size, Inches H x W x D
		Secondary No. 1	Secondary No. 2	
PCA-3	NV	33 VCT at 0.21 A	18 VCT at 1.25 A	3 1/8 x 2 1/2 x 2 5/8
PCA-4	NV	34 VCT at 0.35 A	19 VCT at 2.50 A	3 7/16 x 2 1 3/16 x 2 7/8

16

TRANSFORMERS & REACTORS