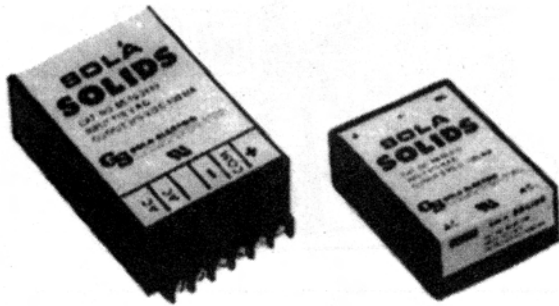


## SOLA SOLIDS LINEAR POWER MODULES

### PRINTED CIRCUIT BOARD SERIES

Mfr. No.	Output Voltage	Output Current	PARD	Case Size
<b>SINGLE OUTPUT</b>				
84-05-150	5 VDC	500 mA	1 mV RMS	1A
84-05-210	5 VDC	1000 mA	1 mV RMS	1B
84-05-220	5 VDC	2000 mA	1 mV RMS	1C
84-10-112	10 VDC	120 mA	0.5 mV RMS	2
84-12-110	12 VDC	100 mA	0.5 mV RMS	2
84-15-110	15 VDC	100 mA	0.5 mV RMS	2
84-24-050	24 VDC	50 mA	1.0 mV RMS	2
<b>DUAL OUTPUT</b>				
84-12-2112	±12 VDC	120 mA ea.	0.5 mV RMS	1A
84-12-2124	±12 VDC	240 mA ea.	0.5 mV RMS	1B
84-15-2110	±15 VDC	100 mA ea.	0.5 mV RMS	1A
84-15-2120	±15 VDC	200 mA ea.	0.5 mV RMS	1B
84-15-2135	±15 VDC	350 mA ea.	0.5 mV RMS	1C
<b>TRIPLE OUTPUT</b>				
84-15-13115	±5 VDC ±15 VDC	1000 mA ea. 150 mA ea.	1 mV RMS	1C
84-15-53110	±5 VDC ±15 VDC	500 mA ea. 100 mA ea.	1 mV RMS	1B



85-05-210

84-15-2110



### FEATURES

- Two year warranty
- UL recognized
- CSA certified
- Printed circuit board mounting or chassis mount
- Solid, dependable, rugged
- Single output or dual tracking outputs
- Plug-in mating sockets available
- Automatic overload protection fully tested
- Operation at rated load from -25°C to +50°C ambient

### SPECIFICATIONS

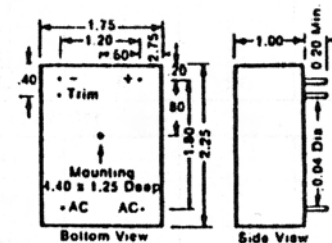
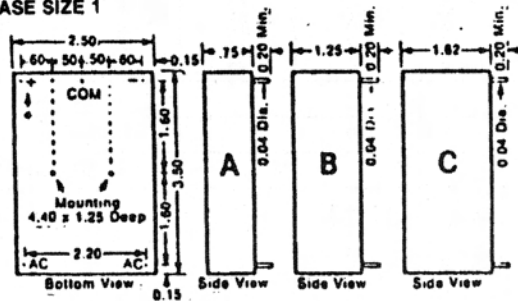
**Source (Input) Voltage:** 115 VAC ±10 VAC (50 to 400 Hz)  
**Output Voltage Accuracy:** ±1%  
**Operating Ambient Temp:** -25°C to +50°C (operation at elevated levels may require derating. Consult factory.)  
**Temp. Effect Coefficient:** 0.02% per °C  
**Storage Temp.:** -25°C to +85°C  
**Source (Input) Isolation:** 50 Megohms  
**Source (Line Regulation):** +.02% or 2.5 mv  
**Load Effect (Load Regulation):** ±.02% or 2.5 mv

### CHASSIS MOUNT SERIES

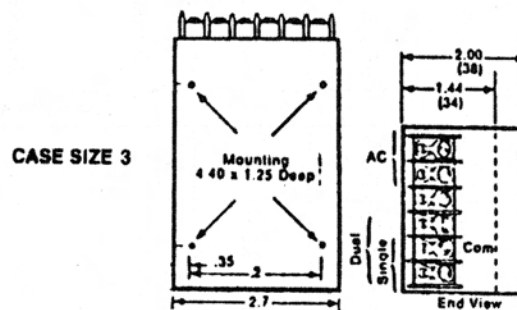
Mfr. No.	Output Voltage	Output Current	Source Effect Max.	Load Effect Max.	PARD	Case Size
<b>SINGLE OUTPUT</b>						
85-05-210*	5V	1000mA	±0.05%	±0.15%	2 MV	3A
85-05-220*	5V	2000mA	±0.05%	±0.15%	2 MV	3B
85-05-150	5V	500mA	±0.05%	±0.05%	2 MV	3A
<b>DUAL OUTPUT</b>						
85-12-2124	±12V	240 mA	±0.05%	±0.05%	1 mV	3A
85-12-2140	±12V	400 mA	±0.05%	±0.05%	1 mV	3B
85-15-2110	±15V	100 mA	±0.05%	±0.05%	1 mV	3A
85-15-2120	±15V	200 mA	±0.05%	±0.05%	1 mV	3A
85-15-2135	±15V	350 mA	±0.05%	±0.05%	1 mV	3B
85-15-2150	±15V	500 mA	±0.05%	±0.05%	1 mV	3B
<b>TRIPLE OUTPUT</b>						
85-15-33115	+5V ±15V	300 mA 150 mA	±0.05%	±0.05%	1 mV	3A
85-15-13115	+5V ±15V	1000 mA 150 mA	±0.05%	±0.05%	1 mV	3B

**Note:** Overvoltage crowbar set to trip at 6.2V nominal.

### CASE SIZE 1



### CASE SIZE 2



### CASE SIZE 3

# POWER SUPPLIES & CONVERTERS