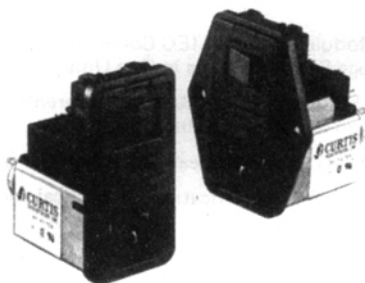


PE80/PM80 SERIES

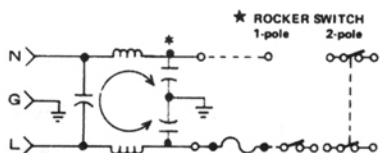


SAFETY AGENCY RECOGNITION/APPROVALS



All Units are Approved under VDE
File No. 11722-4730-1012.

SCHEMATICS



* SWITCH SPECIFICATIONS

2 Pole Rocker Switch	1 Pole Rocker Switch
Rated Current	Rated Current
4A 250VAC	6A 250VAC
6A 125VAC	6A 250VAC
1/10 HP 125V-250VAC	
Max Inrush 51A 125VAC	
.187 Tabs	
10,000 On-Off Operations	

* L/G Capacitors are removed and L/L Capacitor is shifted to load side on all PM Series.

FEATURES

- RFI Filter Module Combines IEC Connector, Fusing, and On/Off Switch in One Unit.
- Accepts Either U.S. or European Standard Fuse Sizes.
- PE80 Series Filters Provide 20% More Differential Mode Attenuation than Comparable Units.
- PM80 Meets UL 544 Specification for Medical and Dental Equipment.

SPECIFICATIONS

Rated Voltages: 250VAC Max., 50/60 Hz.

Rated Current at: 115VAC, 3A and 6A; 250VAC, 3A and 6A

Maximum Operating Ambient Temperature

at Rated Current: 40° C.

Humidity Range: 0.95% R.H.

Insulation Resistance: 9×10^9 ohms at 100VDC

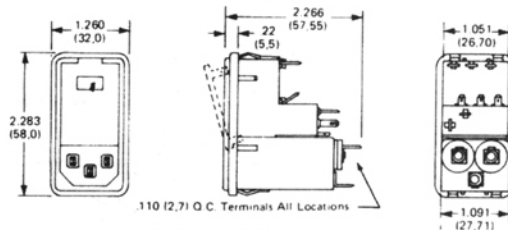
Maximum Leakage Current

Each Line to Ground –	PE80	PM80
at 115VAC, 60 Hz.:	0.25mA	0.002mA
at 250VAC, 50 Hz.:	0.40mA	0.005mA

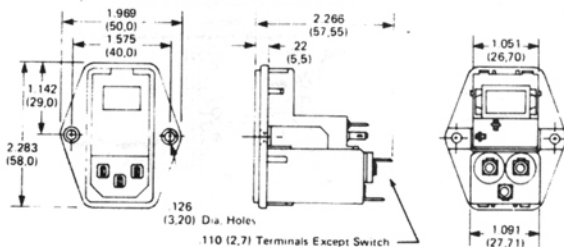
Hipot Test (one minute) –

Line to Ground:	1500VAC	1500VAC
Line to Line:	1450VDC	1450VDC

PE/PM80 SNAP-MOUNT SERIES



PE/PM80 SCREW-MOUNT SERIES



Nominal Current Rating	Part Number	Termination Line/Load	MINIMUM INSERTION LOSS – dB (50 ohm Circuit)						
			MODE	Frequency – MHz					
				.15	0.5	1.0	5.0	10	30
3A	PE8XX03	IEC/Solder Tabs	Common	18	24	30	45	45	50
	PM8XX03	IEC/Solder Tabs	Differential	8	18	24	46	50	40
6A	PE8XX06	IEC/Solder Tabs	Common	14	20	22	24	22	15
	PM8XX06	IEC/Solder Tabs	Differential	8	18	24	32	30	30
6A	PE8XX06	IEC/Solder Tabs	Common	10	19	24	39	44	50
	PM8XX06	IEC/Solder Tabs	Differential	8	18	24	39	40	40
6A	PE8XX06	IEC/Solder Tabs	Common	10	15	18	18	18	15
	PM8XX06	IEC/Solder Tabs	Differential	8	18	24	32	28	25