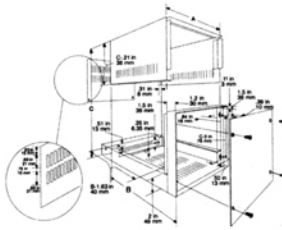


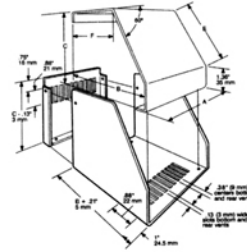
1452 SERIES INSTRUMENT ENCLOSURE



- 20 gauge steel cover and 18 gauge base and frame (for strength)
- Finished in light grey
- Easy to machine .064" thick aluminum panels painted satin black (one side only)
- Philips nickel plated screws and self-adhesive rubber feet included

Mfr. No.	Dimensions (In)		
	A	B	C
1452DE11	7.5	10.9	8.5
1452FF13	9.5	12.9	9.5
1452FH17	9.5	16.9	11.5
1452GC6	10.5	5.9	6.5
1452HD7	11.5	6.9	7.5
1452KE9	13.5	8.9	8.5
1452PG9	17.5	8.9	10.5

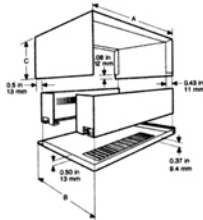
SCEM SERIES SLOPED INSTRUMENT ENCLOSURE



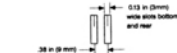
- Convection ventilation is provided by slots in the bottom and removable rear panels
- Aluminum case is finished in satin blue with a light grey panel
- Hardware and rubber feet included

Mfr. No.	Dimensions (In)					
	A	B	C	E	F	
SCEM101110WH	4	4.5	4	3	2.9	
SCEM161110WH	6.5	4.5	4	3	2.9	
SCEM161414WH	6.5	5.5	5.5	4.7	3.1	
SCEM251414WH	10	5.5	5.5	4.7	3.1	
SCEM251619WH	10	6.5	7.5	7	2.9	
SCEM351619WH	14	6.5	7.5	7	2.9	

1426 SERIES INSTRUMENT ENCLOSURE

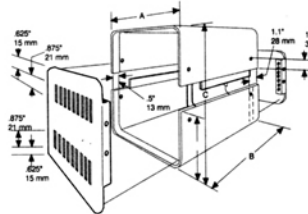


- Top and bottom made in 20 gauge steel (for strength)
- Finished in a light grey or satin blue
- Easy to machine 0.064" thick aluminum panels front and rear
- Rear panel and bottom of enclosure is vented
- Front panel is satin black, rear panel matches case color
- 6-32 Philips nickel plated screws and self-adhesive rubber feet included



Mfr. No.	Off White	Satin Blue	Dimensions (In)		
			A	B	C
1426K	1426K-B		6	5	4
1426M	1426M-B		8	6	4
1426O	1426O-B		10	7	4
1426Q	1426Q-B		11	11.7	5.5
1426S	1426S-B		12	6	4
1426V	1426V-B		12	8	4
1426W	1426W-B		12	10	4
1426Y	1426Y-B		12	6	5.5

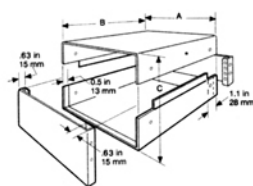
1401 SERIES INSTRUMENT ENCLOSURE



- 20 gauge steel top & bottom halves finished in light grey
- 0.064" thick aluminum panels, front finished in satin black and vented back finished in light grey
- Rear panel is vented top and bottom
- 6-32 Philips nickel plated screws and self-adhesive rubber feet included

Mfr. No.	Dimensions (In)		
	A	B	C
1401AAA	4	6	4
1401AA	6	6	5
1401A	6	10	5
1401C	8	10	9
1401E	8	8	8
1401G	10	12	9
1401K	10	14	6.5
1401M	12	8	9
1401N	14	8	9
1401P	14	10	5

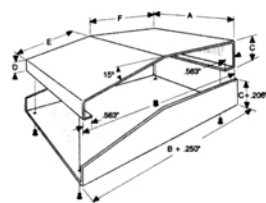
1458 SERIES INSTRUMENT ENCLOSURE



- 20 gauge steel case with black or blue satin finish
- Easy to machine 0.064" thick aluminum panels front and rear (one satin black and one light grey)
- Symmetrical design so either end panel can be front
- 6-32 Philips nickel plated screws and self-adhesive rubber feet included

Mfr. No.	Satin Black	Satin Blue	Dimensions (In)		
			A	B	C
1458A3	1458A3B		4	4	3
1458B4	1458B4B		6	4	4
1458C3	1458C3B		6	6	3
1458C4	1458C4B		6	6	4
1458D3	1458D3B		8	8	3
1458D4	1458D4B		8	8	4
1458D5	1458D5B		8	8	5
1458E3	1458E3B		8	10	3
1458E4	1458E4B		8	10	4
1458E5	1458E5B		8	10	5
1458G3	1458G3B		10	8	3
1458G4	1458G4B		10	8	4
1458G5	1458G5B		10	8	5

1456 SERIES SLOPED INSTRUMENT ENCLOSURE



- Aluminum cases 0.081" thick
- Sold pre-assembled with a textured blue case and a light grey top panel
- Comes with self adhesive rubber feet and required mounting hardware

Mfr. No.	Dimensions (In)						° of Slope
	A	B	C	D	E	F	
1456CE2WHBU	4	5.5	2	1.1	3.3	2.2	15°
1456KH3WHBU	10	8.3	3	1.3	6.3	2.2	15°
1456PL3WHBU	14	11.3	3	1.3	6.3	5.2	15°
1456FE3WHBU	6.5	5.5	3	1.1	3.7	2.2	30°
1456FG4WHBU	6.5	7.2	4	1.1	5.7	2.2	30°
1456KK4WHBU	10	10.2	4	1.1	5.7	5.2	30°
1456RK4WHBU	17	10.2	4	1.1	5.7	5.2	30°