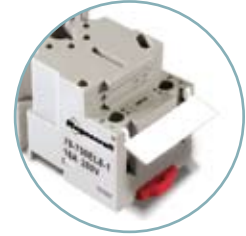


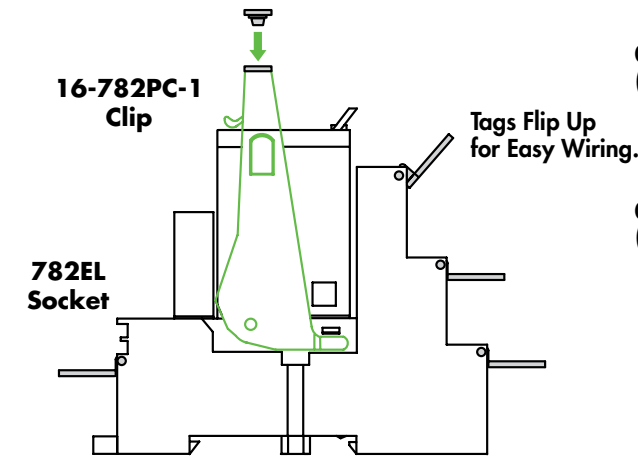
I.D. Tag/Write-On Plastic Labels

NEW

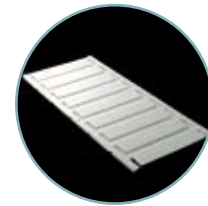
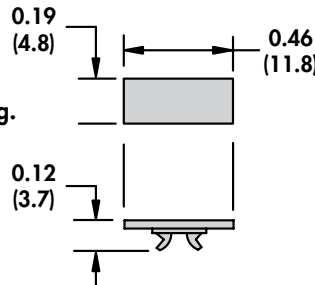


SECTION 3

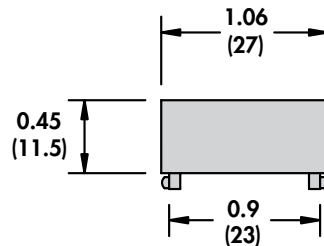
| Characteristics | 16-700ST-1* | 16-782FT-1 | 16-750/788FT-1 |
|--------------------------------|---|---|---|
| Description | Write-On Plastic Label *for 16-782PC-1 Clip | Write-On Plastic Label for Sockets | Write-On Plastic Label for Sockets |
| Function | Identification of Relays in Multi-Relay Apps. | Identification of Circuits in Multi-Relay Apps. | Identification of Circuits in Multi-Relay Apps. |
| Packaging Minimum | Tear-off card/108 pieces | 10 pieces | 10 pieces |
| Used with these Sockets | | | |
| | 70-782D14-1 (Sec. 2, p.22-23) | 70-782EL8-1 (Sec. 2, p.14-15) | 70-750E8-1 (Sec. 2, p.28-29) |
| | 70-782EL8-1 (Sec. 2, p.14-15) | 70-782EL11-1 (Sec. 2, p.16-17) | 70-750E11-1 (Sec. 2, p.28-29) |
| | 70-782EL11-1 (Sec. 2, p.16-17) | 70-782EL14-1 (Sec. 2, p.18-19) | 70-750EL8-1 (Sec. 2, p.26-27) |
| | 70-782EL14-1 (Sec. 2, p.18-19) | 70-782E14-1 (Sec. 2, p.20-21) | 70-750EL11-1 (Sec. 2, p.26-27) |
| | 70-782E14-1 (Sec. 2, p.20-21) | | 70-788EL11-1 (Sec. 2, p.24-25) |



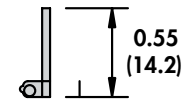
16-700ST-1



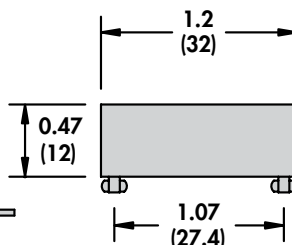
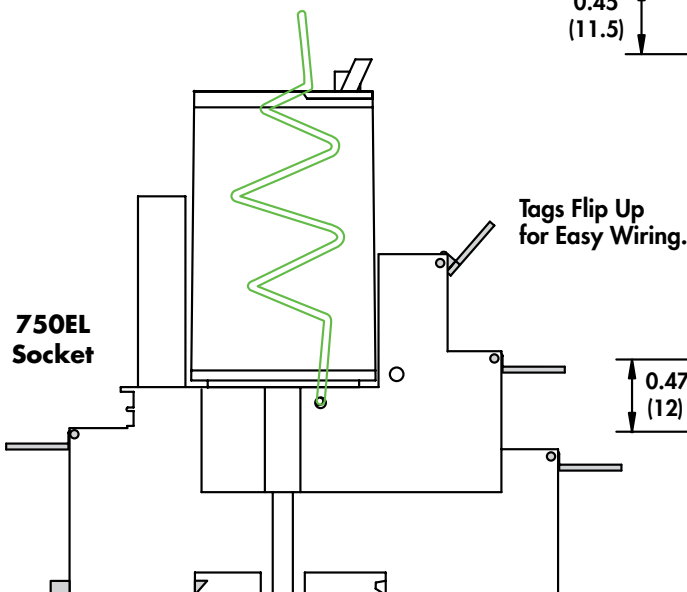
Note:
16-782ST plastic label sold as a 108 piece tear-off card.



16-782FT-1



Note:
16-782FT and the 16-750/788FT plastic labels sold as a 10 piece package.



16-750/788FT-1

