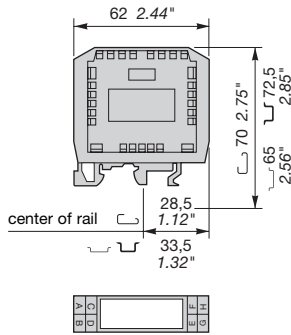


Relay interfaces

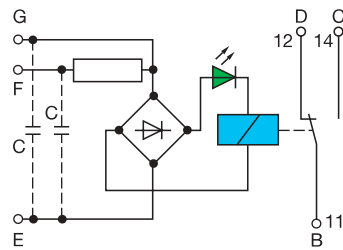
Relay modules
Series 10 000

DIN 1 - 3



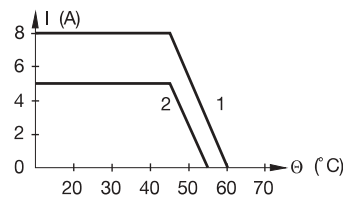
RB 121 A 110, 135 V AC/DC

Spacing 18 mm .709"



- 110 V AC/DC input : GE
- 135 V AC/DC input : FE
- In option, AC leakage current protection of input by adding capacitor "C".

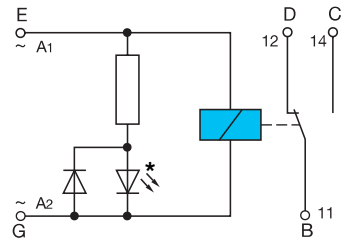
Ambient temperature derating curve



- 1 : version 110 V AC/DC
- 2 : version 135 V AC/DC

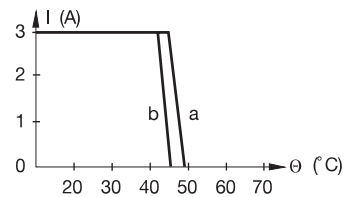
RB 121 B 24, 48, 115 V AC

Spacing 23 mm .905"



- Red LED for the 24 and 48 V AC.
- Green LED in series with the relay for the 115 V AC.

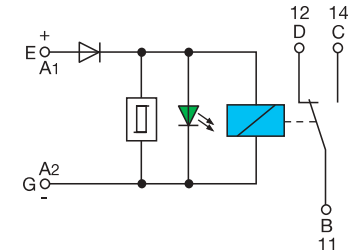
Ambient temperature derating curve



- a : horizontal position
- b : vertical position

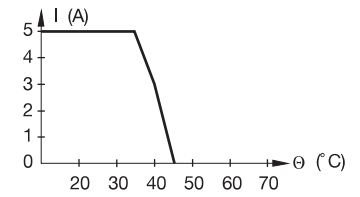
RB 121 S with threshold 24 V DC

Spacing 18 mm .709"



- LED and relay non-energized for resistive source (3,9 kΩ) current ≤ 6 mA in parallel on the contact.

Ambient temperature derating curve



Part numbers

Type	P/N	Type	P/N	Type	P/N
RB 121 A 110 V AC/DC 135 V AC/DC	0010 226.23	RB 121 B 24 V AC 48 V AC 115 V AC 115 V AC orange	0010 065.25 0010 066.26 0010 067.27 0010 088.25	RB 121 S 24 V DC	0010 238.07

Approvals (Contact Entelec)



Characteristics

COIL		110 V AC/DC		135 V AC/DC		24 V AC			48 V AC			115 V AC			24 V DC		
Rated voltage	+ 20%, - 15% on DC + 10%, - 15% on AC															+ 10%, - 10% on DC	
Power		0.5 W		0.6 W		1.5 VA		1.5 VA		1.3 VA					0.62 W		
Rated current		4.3 mA		4.4 mA		61 mA		31 mA		11 mA					26 mA		
Drop-out voltage		11 V AC/DC		13.5 V DC		4.3 V AC		8.6 V AC		20.7 V AC					3 V		
Drop-in voltage															18 V		
Permissible leakage current															6 mA max.		
CONTACT																	
Type		1 SPDT				1 SPDT						1 SPDT					
Voltage switching range min. / max.		12 V / 250 V				12 V / 250 V						12 V / 250 V					
Current switching range min. / max.		10 mA / 8 A				10 mA / 3 A						10 mA / 5 A					
Load switching range AC1 min. / max.		0.6 VA / 2000 VA				580 mVA / 750 VA						0.6 VA / 1250 VA					
DC1 min. / max.		see curves, page 681				230 mW / see curves, page 681						0.6 W / see curves, page 681					
Max. load												see curves, page 681					
Number of on-load operations		2 x 10 ⁵				3 A / 100 W - 5 x 10 ⁵			3 A / 750 VA - 10 ⁵			2 x 10 ⁵					
Number of off-load operations		2 x 10 ⁷				10 ⁷						2 x 10 ⁷					
Operating speed	C	7 ms				2 ms						3.6 ms					
	O	6 ms				2 ms						9 ms					
Bounce		2 ms				0.5 ms						2 ms					
Isolation, coil / contacts		2500 V rms				1500 V rms						3000 V rms					
Isolation, contacts / contacts		1500 V rms				750 V rms						1000 V rms					
TEMPERATURE																	
Ambient temperature																	
Storage		- 40°C to + 80°C				- 40°C to + 80°C						-40°C to +80°C					
Operating temperature		- 20°C to + 60°C				- 20°C to + 48°C						-20°C to +45°C					

Accessories, marking, wire size : see Accessories section.