

Ratings
 SPDT or DPDT (1 or 2 form C) contacts
 15 amp @ 29VDC or 115VAC

Description
 Low cost industrial relay
 High density packaging
 Heavy duty contact switching
 Long life

Shaded ring for AC operation
 Weight: 5.0 ounces
 Enclosure: Open (BOT) standard mounting
 Terminals: solder lug

Performance Data
 Operate Time:
 30ms or less at nominal voltage
 Release Time:
 DC—10ms or less at nominal voltage
 AC—25ms or less at nominal voltage

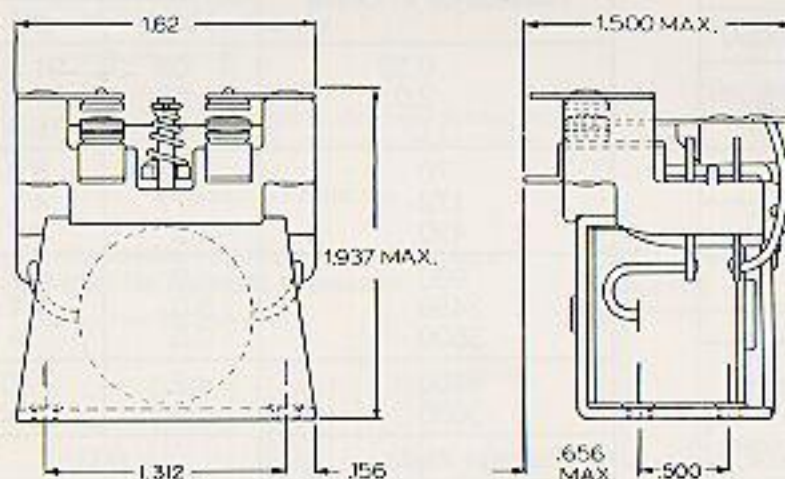
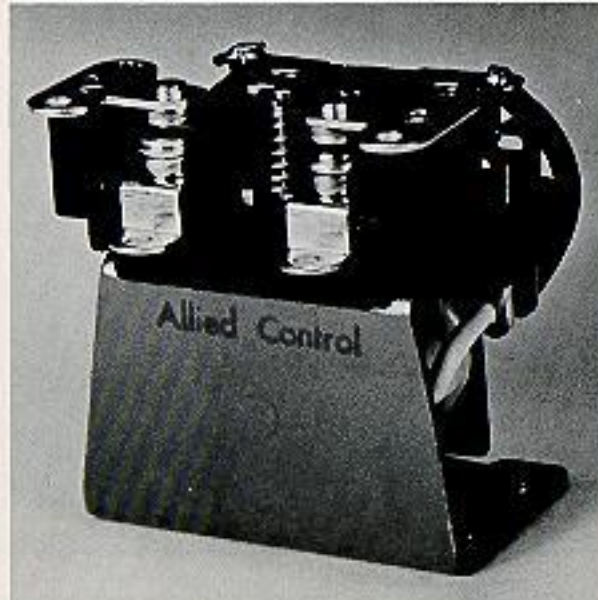
Initial Contact Resistance:
 0.05 ohms max.
Insulation Resistance:
 1000 megohms min.

Maximum Contact Arrangement:
 Two pole double throw

Contact Rating:
 Non-inductive: 15 amp @ 29VDC or 115VAC
 Inductive: 6 amp @ 29VDC or 115VAC
 Motor: 8 amp @ 29VDC or 115VAC

Dielectric Strength:
 1250V rms at sea level

Vibration:
 10 to 55Hz at 0.062 inch double amplitude
Shock: 25g operational
Ambient Temperature: 0°C to +71°C



MOUNTING #6-32NC-2B TAPPED HOLES (4)
 AVAILABLE WITH #6-32NC-2B LOCK NUTS (4) AS TYPE 80
 DIMENSIONAL TOLERANCES: XX - ± 0.015, XXX - ± 0.010
 ALL DIMENSIONS IN INCHES UNLESS OTHERWISE NOTED

Type Designation and Coil Data (at 25°C)

Relay Type	DC Nominal Coil Data		Max. Pick-up Voltage at +25°C
	Volts	Ohms**	
BOT-*D-3VDC	3	4.0	2.4
BOT-*D-6VDC	6	14.2	4.8
BOT-*D-12VDC	12	70.0	9.6
BOT-*D-26.5VDC	26.5	230.0	18.0
BOT-*D-48VDC	48	1024.0	38.4
BOT-*D-110/120VDC	110/120	5000.0	92.0

*Insert contact code when ordering

**DC resistance ± 10%

Ordering Information

BOT I II III

- I. 3 (SPDT) or 6 (DPDT)
- II. A (AC coil) or D (DC coil)
- III. Coil voltage (VAC or VDC)

Type Designation and Coil Data (at 25°C)

Relay Type	AC Nominal Coil Data		Max. Pick-up Voltage at +25°C
	Volts	Ohms**	
BOT-*A-6VAC	6	1.07	4.8
BOT-*A-12VAC	12	4.10	9.6
BOT-*A-24VAC	24	17.0	18.0
BOT-*A-48VAC	48	73.6	38.4
BOT-*A-110/120VAC	110/120	445.0	92.0
BOT-*A-230VAC	230	1700.00	184.0