

Ratings

AC: up to 4 form C contacts; 2, 5 or 10 amp @ 115VAC, 50/60Hz
 DC: up to 4 form C contacts; 2, 5 or 10 amp @ 29VDC

Description

- Miniaturization
- High reliability at low cost
- Mounting and terminal options
- Reverse polarity protection
- No false operation
- 2-pole or 4-pole models
- Fixed or adjustable timing
- Low-level to 10 amp loading
- Choice of interval or Delay-to-make
- Time ranges from 0.1 to 100 seconds

Performance Data

- Repeat accuracy: ± 2%
- Reset Time: 70ms max. (DC); 200ms max. (AC)
- Temperature Range: 0°C to 55°C
- Timing Adjustment: 500kohm multi-turn potentiometer for internal adjustment
- Any Fixed Time: 0.1 to 100 seconds
- Dielectric Strength: 1000V rms
- Life: Mechanical 100 million operations
 Electrical—see Cradle® relay life expectancy chart

The TD10 utilizes the service proved T154 Cradle® relay with a solid state timing circuit to provide timing from 0.1 to 100 seconds with ± 2% repeat accuracy.

Available as "time delay to make" or "interval" timing models with optional operating and mounting features.

Catalog Number	Time Range (in seconds)	Input Volt
----------------	-------------------------	------------

INTERVAL

TD10NA-2C-12DNB	0.1 to 10	12VDC
TD10NA-2C-24DNB	0.1 to 10	24VDC
TD10NA-2C-115ANB	0.1 to 10	115VAC 50/60 Hz
TD10NA-2C-12DND	1 to 100	12VDC
TD10NA-2C-24DND	1 to 100	24VDC
TD10NA-2C-115AND	1 to 100	115VAC 50/60 Hz

DELAY TO MAKE

TD10DA-2C-12DNB	0.1 to 10	12VDC
TD10DA-2C-24DNB	0.1 to 10	24VDC
TD10DA-2C-115ANB	0.1 to 10	115VAC 50/60 Hz
TD10DA-2C-12DND	1 to 100	12VDC
TD10DA-2C-24DND	1 to 100	24VDC
TD10DA-2C-115AND	1 to 100	115VAC 50/60 Hz

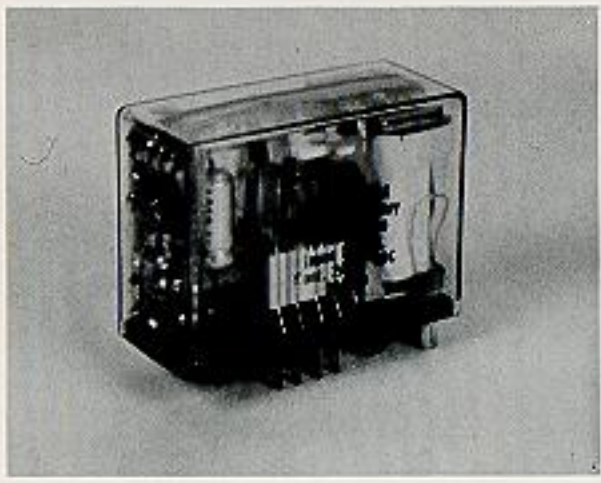
Ordering Information

TD10 I II III IV V VI VII

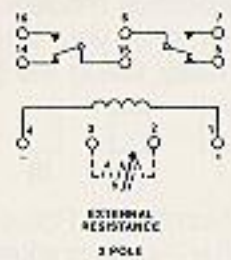
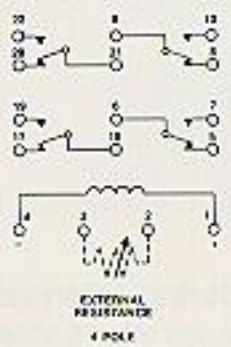
I. Function
 D—Time delay to make
 N—Interval

II. Terminal Type
 A—Plug-in pins
 B—Printed circuit pins

III. Contact Configuration
 2—2 form C, DPDT
 4—4 form C, DPDT



Wiring Diagrams



INTERVAL

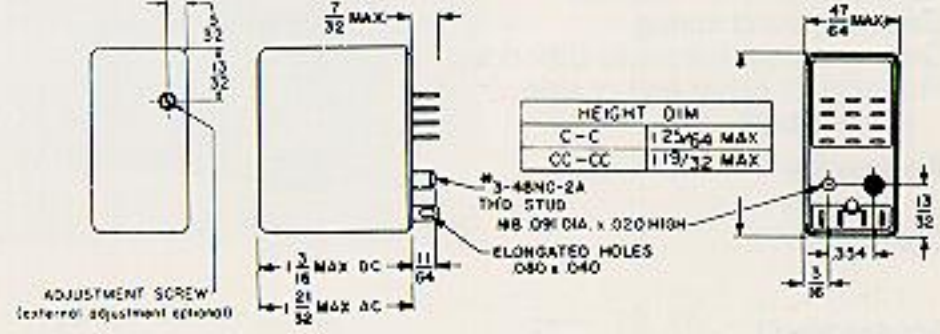
	Before	During	After
INPUT		█	
NO CONTACT		█	
N.C. CONTACT	█		

TIME DELAY TO MAKE

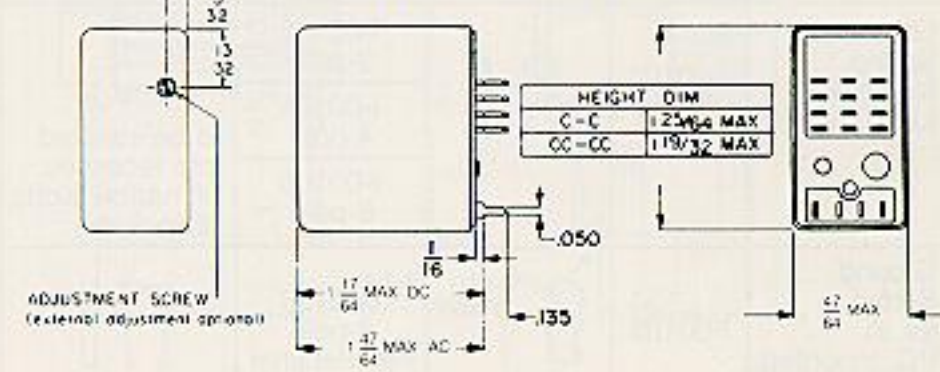
	Before	During	After
INPUT		█	
NO CONTACT		█	
N.C. CONTACT	█		

Dimension Drawings

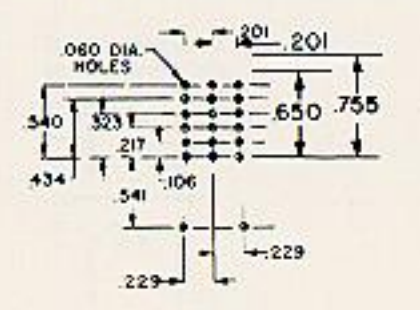
PLUG-IN (SOLDER) TERMINALS



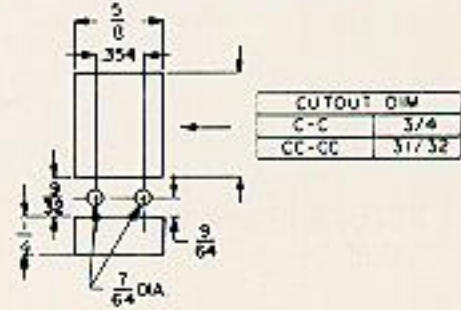
PRINTED CIRCUIT TERMINALS



PRINTED CIRCUIT LAYOUT



CHASSIS LAYOUT



Uses Cradle® sockets: 6-pole for 2C timer, 8-pole socket for 4C timer. See page 8.

IV. Contact Type

- A—Single point; fine silver, gold Diffused; for 2 ampere
- B—Bifurcated; fine silver, gold Diffused; low level under 60mA
- C—Single point; silver cadmium oxide, gold plated; for 3 to 5 amp

V. Nominal Input Voltage

- 12D—12VDC
- 24D—24VDC
- 48D—48VDC
- 115A—115VAC

VI. Time Adjustment

- N—Internal potentiometer adjustment
- R—Remote adjustment or fixed time
- F—Fixed time (internal)

VI. Time Range

- A—0.1 to 1.0 sec.
- B—0.1 to 10.0 sec.
- C—1.0 to 50.0 sec.
- D—1.0 to 100 sec.

*Specify timing with 3 digits e.g. 030=30 seconds.