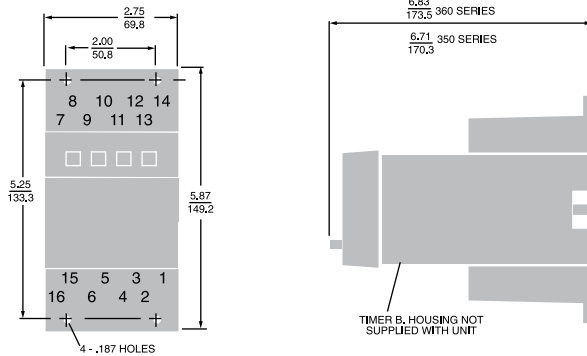


This accessory part comprises of a bracket and an integral terminal strip. The bracket facilitates surface mounting while the strip relocates all terminals where they are conveniently accessible from the front.

**DIMENSIONS** (INCHES/MILLIMETERS)



FOR SERIES 353, 354, 355, 356, 365,  
366, 376, 385

Order Part. No. 353-260-27-00



*Surface Mounting Brackets*



*8 and 11-Pin Base Mount/Din  
Rail Sockets*

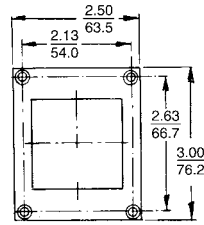


Panel Mounting Adapter Kits

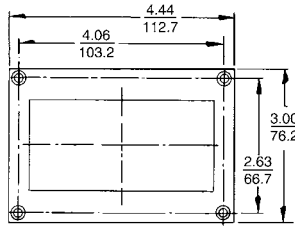
**72MM<sup>2</sup> PANEL MOUNTING ADAPTER KITS:** When panel cutouts already exist, these adapter kits allow easy mounting of ATC's newer 72mm<sup>2</sup> units. Two kits are available. One makes easy replacement of round panel cutouts, from early Eagle Signal and ATC products. The other allows cutouts from older Durant, Veeder Root and Red Lion products to be reduced to the compact 72mm<sup>2</sup> size.

**1/16 DIN PANEL MOUNTING ADAPTER KITS:** These adapter kits are designed to mount the newer 1/16 DIN (48mm<sup>2</sup>) standard housing styles. One adapter kit allows retrofit format 72mm<sup>2</sup> housing cutout to a 1/16 DIN cutout. The other three adapter kits allow easy mounting of one, two or four 1/16 DIN units, side by side.

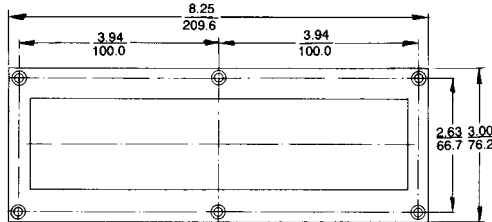
► **DIMENSIONS** (INCHES/MILLIMETERS)



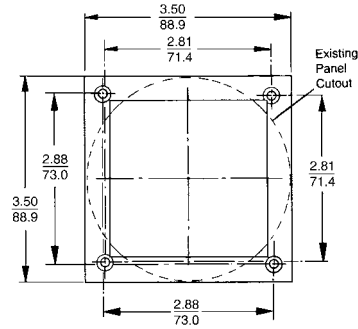
405-320-03-00



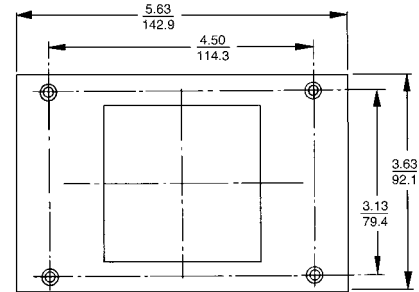
405-320-06-00



405-320-05-00



305-265-61-70



376-320-01-00

**MODEL NUMBER**

**DESCRIPTION**

**FOR RETROFIT OF:**

305-265-61-70

Round Cutout  
Retrofit Kit

Eagle Signal: CE, CD, CT, CX, HG, HQ, HP, HZ Series  
ATC: 305, 310, 325, 326, 335, 336 Series

376-320-01-00

Square Cutout  
Retrofit Kit

Red Lion: GE mini Series, Eagle Signal:RX, DG Series  
Veeder Root: 7910 Series  
Durant: President, 5881 Series

405-320-03-00

Single unit mounting kit

405-320-06-00

Two unit mounting kit

405-320-05-00

Four unit mounting kit

## 1/16 DIN TIMER ACCESSORIES—8 PIN ACCESSORIES

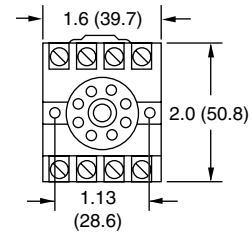
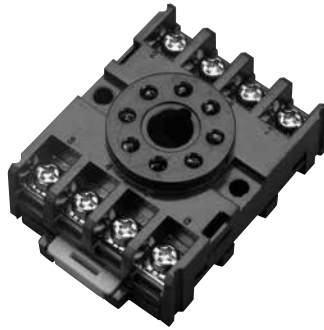
000-825-85-00

8-Pin surface DIN rail socket.

Recommended for use with all 8-pin octal plug-in devices when surface mounting or DIN rail mounting.

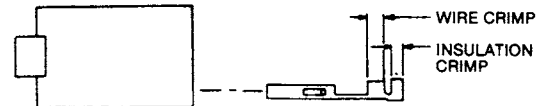
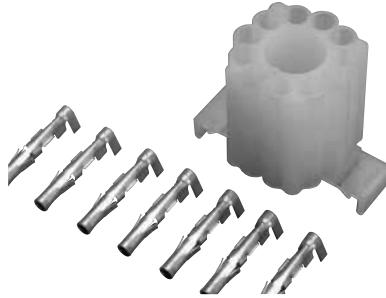
UL #E72711

US & CAN.



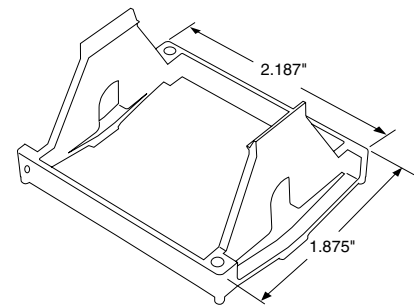
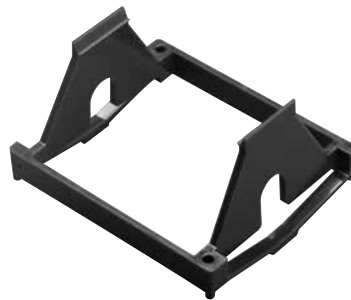
319-261-45-00

Plug-on socket kit (8 pin). Recommended for use with all 8-pin octal plug-in devices. Panel mounting only. Attach the wires to the solderless connector with a crimping tool.



405-320-02-00

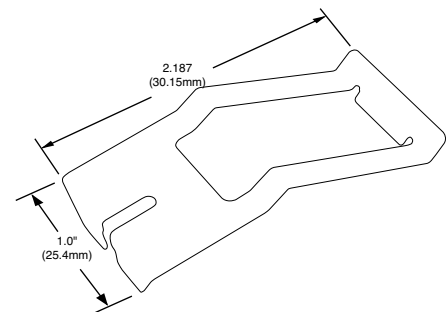
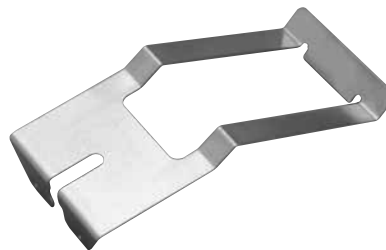
Panel Mounting bracket. Recommended for use with all 1/16 DIN timers when panel mounting. Use in conjunction with the 8-pin or 11-pin panel socket with rear facing terminals.



407-025-13-00

Hold-down for part #000-825-85-00.

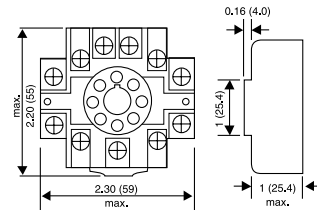
Two (2) needed for proper installation.



## 1/16 DIN TIMER ACCESSORIES—8 PIN ACCESSORIES

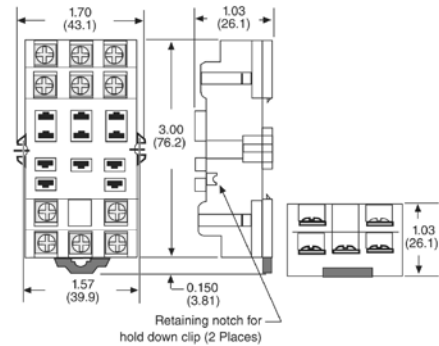
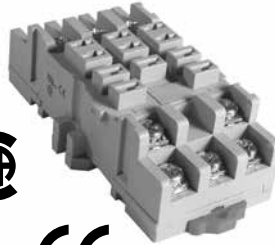
000-825-86-00

11-Pin surface DIN rail socket.  
Recommended for use with all 11-pin octal plug-in devices when surface mounting or DIN rail mounting.



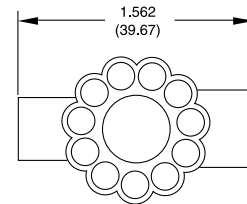
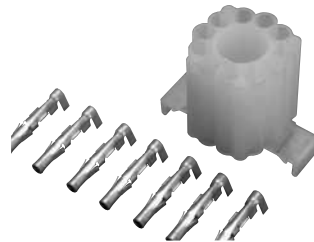
70-463-1

11-Pin Socket, DIN/Panel Mount, with screw terminals & Clamping plates.



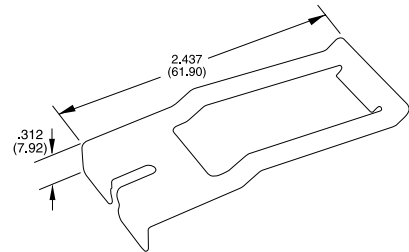
314-260-07-00

Plug-on socket kit (11-pin).  
Recommended for use with all 11-pin octal plug-in devices. Panel mounting only. Attach the wires to the solderless connector with a crimping tool.



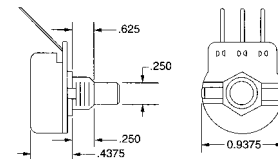
405-025-07-00

Hold down for part #000-825-86-00.  
Two (2) needed for proper installation.



101026105

Recommended for use with all the ATC Diversified Electronics family of "remote adjustable" timers. Proper spacing is maintained for UL and CSA applications. This linear taper potentiometer has a non-conductive shaft attached to the internal conductive plastic wafer. The brass bushing is 3/8" x 32NEF and accepts adjustment hardware 1000540070, 100054071.



100054073

Recommended for use with any adjustment or switch having a 1/4" shaft. This knob slips over the shaft and is secured in place by a #6-32 set screw. The knurled, mirror finished, black thermostat knob has a white pointer line for reference.

