



Repeat Cycle—ON Time First Relay Output

SPECIFICATIONS

TIMING RANGES

Virtually unlimited. See page 77 for standard ranges available.

OUTPUT RATING	DPDT, 10 A @ 250 VAC or 24 VDC, resistive; 211 VA @ 120 VAC, inductive
----------------------	---

TIMING	Minimum Setting	+0 – 20%
---------------	-----------------	----------

TOLERANCES	Maximum Setting	±10%;
-------------------	-----------------	-------

REPEATABILITY 1% maximum; no first cycle effect

RESET TIMES	Before Time Out	100 mSEC
	After Time Out	50 mSEC

RECYCLE TIME 40 mSEC

SUPPLY VOLTAGE 24 or 120 VAC or VDC, 50/60 Hz; ±10%

FALSE TRANSFER No

REVERSE POLARITY PROTECTED Yes

POWER CONSUMPTION 3 watts (approximately)

DUTY CYCLE Continuous

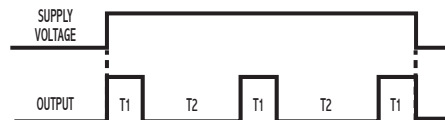
TEMPERATURE RATING	Operate	32° to 131°F (0° to +55°C)
	Storage	-49° to 185°F (-45° to +85°C)

LIFE EXPECTANCY	Mechanical	10 million operations (minimum)
	Electrical	100,000 operations @ rated load

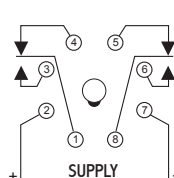
WEIGHT 6.4 oz.

OPERATION

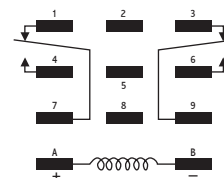
Application of voltage to the input of the timer energizes the relay and initiates the ON time. Upon completion of the ON time, the relay de-energizes and the OFF time begins. Upon completion of the OFF time, the relay energizes and one cycle is completed. This ON/OFF cycling continues until voltage is removed from the input. The ON/OFF time periods are independently adjustable.



WIRING

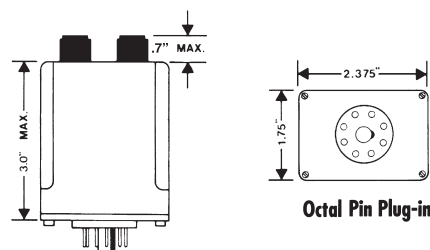


DPDT Octal Plug-in
RB-08/PF083A



DPDT Blade Plug-in
70-463-1

DIMENSIONS (INCHES)



MODEL NUMBER

MODEL NUMBER	TDG		A			
SUPPLY VOLTAGE						
24 VAC or DC	24					
110/120 VAC or DC	120					
TYPE OF OPERATION						
Knob Adjustable			K			
Lock Nut Adjustable			L			
Fixed			F			
ENCLOSURE STYLE						
8-pin octal plug-in				A		
Blade plug-in				B		
DELAY PERIOD						
See page 77 for standard ranges available						

Example: TDG-120-AKA-300 - Repeat cycle , On time first, 120 Volts AC or DC, Knob adjustable, both delays independantly adjustable from 3 seconds to 300 seconds, 8 pin octal plug-in.