



**CRL US**  
E55826

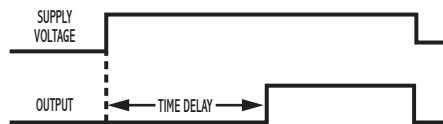
## ON-Delay Solid State Output

### SPECIFICATIONS

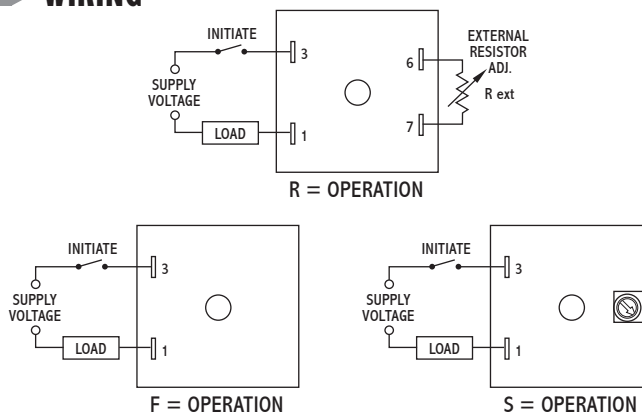
<b>TIMING RANGES</b>	Virtually unlimited. See page 73 for standard ranges available.	
<b>OUTPUT RATING</b>	Solid-state, SPST-N.O. 1 amp resistive; 1 amp 25VA @ 24VAC 1 amp 125VA @ 120VAC .5 amp 125VA @ 240 VAC	
<b>TIMING TOLERANCES</b>	Minimum Setting	+0 – 20%
	Maximum Setting	±10%
<b>REPEATABILITY</b>	1% maximum; no first cycle effect	
<b>RESET TIMES</b>	Before Time Out	100 mSEC
	After Time Out	50 mSEC
<b>RECYCLE TIME</b>	40 mSEC	
<b>SUPPLY VOLTAGE</b>	12 to 240 VDC, 24 to 240 VAC ±10%, 50/60 Hz	
<b>FALSE TRANSFER</b>	No	
<b>ENCLOSURE</b>	Surface mounted; totally encapsulated with a high quality epoxy for environmental protection.	
<b>TEMPERATURE RATING</b>	Operate	32° to 131°F (0° to +55°C)
	Storage	-49° to 185°F (-45° to +85°C)
<b>TERMINATIONS</b>	1/4" quick disconnect terminals	
<b>WEIGHT</b>	NET: 1.28 oz	Shipping: 1.6 oz.

### OPERATION

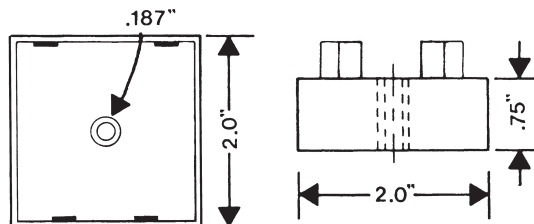
The time delay begins when power is applied to the timer. Upon completion of the delay period, the load energizes. Reset during or after the delay period is accomplished by removal of the input voltage. The TSC will not false transfer if voltage is removed prior to completion of the delay period. A fast recycle time permits accurate, high speed, continuous operation.



### WIRING



### DIMENSIONS (INCHES)



### MODEL NUMBER

<b>MODEL NUMBER</b>	TSC	100	A		C	
<b>TYPE OF OPERATION</b>						
Fixed (Factory Preset)						F
External Resistor Adjustable; See page 73 for resistor selection.						R
Screwdriver Adjustable						S
<b>DELAY PERIOD</b>						
See page 73 for standard ranges available						

Example: TSC-100-ARC-100—Delay on operate, external resistor adjustable from 1 to 100 seconds, UL recognized.