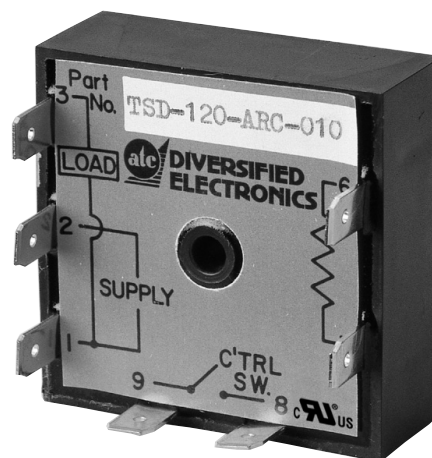
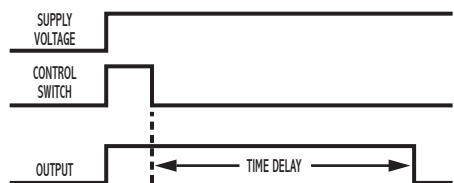


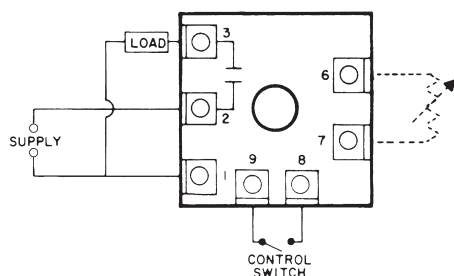
OPERATION

Voltage is continuously applied to the input. An external isolated switch controls the timer. When closed, the load energizes. Opening the switch initiates the delay period. Upon completion of the delay period, the load de-energizes. If the control switch recloses during the delay period, the load remains energized and the timer resets to zero.

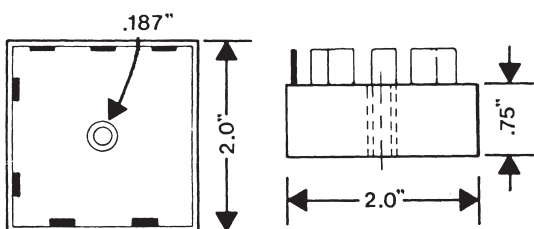


OFF-Delay Solid-State Output

WIRING



DIMENSIONS (INCHES)



MODEL NUMBER

MODEL NUMBER	TSD		A		C	
SUPPLY VOLTAGE	120 VAC	120				
	240 VAC	240				
TYPE OF OPERATION	Fixed		F			
	External Resistor Adjustable; See page 73 for standard ranges available		R			
DELAY PERIOD						

Example: TSD-120-ARC-200—Delay on Release, 120 VAC, external resistor adjustable from 2 to 200 seconds, UL recognized.

SPECIFICATIONS

TIMING RANGES	Virtually unlimited. See page 73 for standard ranges available.	
OUTPUT RATING	Solid-state, SPST-N.O. 1 amp resistive; 1 amp 25VA @ 24VAC 1 amp 125VA @ 120VAC .5 amp 125VA @ 240 VAC	
TIMING TOLERANCES	Minimum Setting	+0 – 20%
	Maximum Setting	±10%
REPEATABILITY	1% maximum; no first cycle effect	
RESET TIMES	Before Time Out	100 mSEC
	After Time Out	50 mSEC
RECYCLE TIME	40 mSEC	
SUPPLY VOLTAGE	120 or 240 VAC, 50/60 Hz; ±10%	
FALSE TRANSFER	No	
ENCLOSURE	Surface mounted; totally encapsulated with a high quality epoxy for environmental protection.	
TEMPERATURE RATING	Operate	32° to 131°F (0° to +55°C)
	Storage	-49° to 185°F (-45° to +85°C)
TERMINATIONS	1/4" quick disconnect terminals	
WEIGHT	NET: 1.28 oz. Shipping: 1.6 oz.	