



Sub-Miniature Pushbutton

Specifications

Electrical Ratings	3A @ 120VAC, 28VDC 1A @ 250VAC See Contact Options	Travel	0.90 ± 0.15mm
Electrical Life	50,000 cycles typical	Actuation Force	250 ± 150gF
Contact Resistance	<20mΩ initial @ 2-4VDC, 100mA	Dielectric Strength	1500Vrms min
		Insulation Resistance	>100MΩ min
		Operating Temperature	-40°C to 85°C
		Storage Temperature	-40°C to 85°C

Materials

Actuator	Thermoplastic Polyester
Housing	Diallyl Phthalate (DAP)
Cover	Stainless Steel
Bushing	Brass, Nickel Plated
Contacts	Cooper Alloy, Silver Plated
Terminals	Brass, Silver Plated

Ordering Information

1. Series	BNP	1	1	S	C	Q	E
BNP							
2. Number of Poles 1 = Single Pole							
3. Switch Function 0 = OFF - (ON) For SPST Only 1 = ON - (ON) For SPDT Only							
4. Bushing Blank = Panel Mount Frame S / U = 5.59mm, 10-48UNS / Non-threaded, flat T = 5.59mm, Non-threaded, round V / V1 = 7.87mm, ¼-40NS / Non-threaded, flat S9 = 3.20mm, Actuator only							
5. Terminals B = Solder Lug C = PC pin H = Horizontal mount, right angle PC pin; HS = Snap in V = Vertical mount, right angle PC pin; VS = Snap in A5 = PC pin with support bracket; A5S = Snap in support bracket							
6. Contacts Q = Silver plated R = Gold plated G = Gold over Silver plated							
7. Epoxy Seal E = Epoxy Seal							
8. Cap / Frame C84 C85 C87 <i>Only used with V & V1 bushings</i>							See cap options for color availability

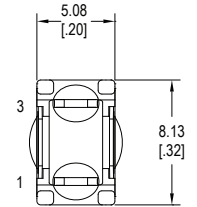
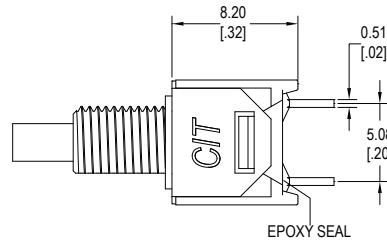
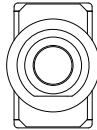
Switch Function



SPST



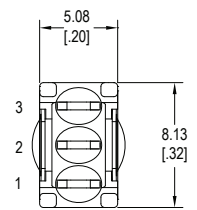
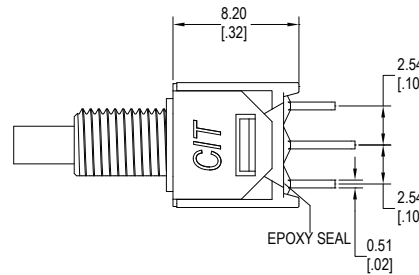
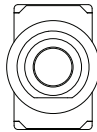
Function	Pushbutton Position	
1	OFF	(ON)
Terminals	--	1-3



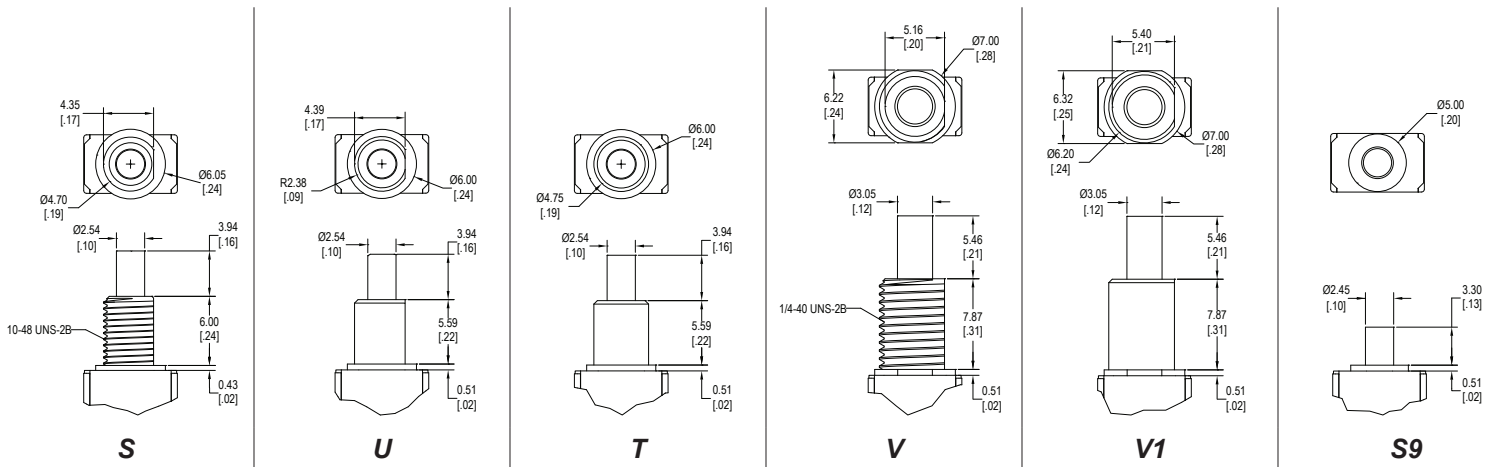
SPDT



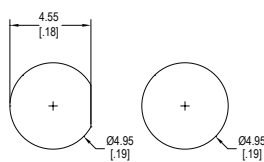
Function	Pushbutton Position	
1	ON	(ON)
Terminals	2-1	2-3



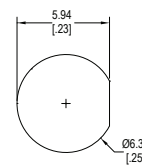
Bushing Options



Panel Mounting

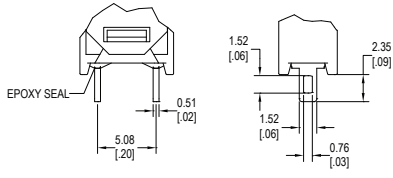


Used with S, U & T Bushings

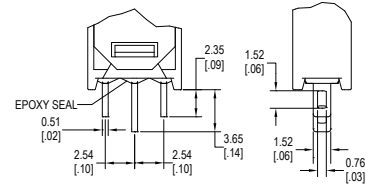


Used with V & V1 Bushings

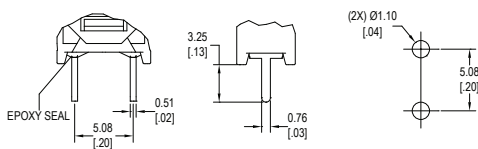
Terminal Options



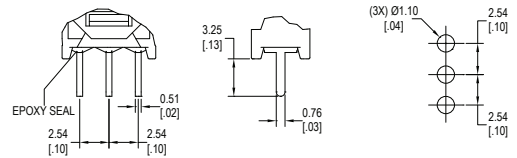
B
single pole, single throw



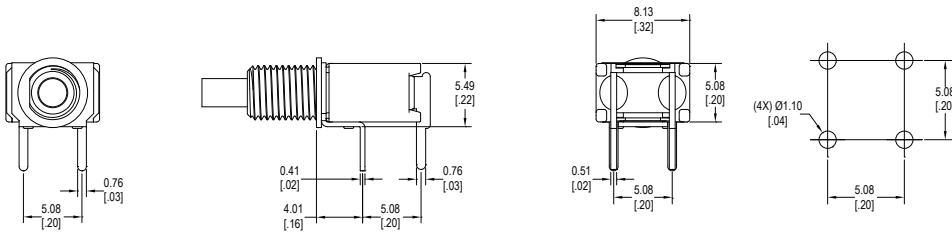
B
single pole, double throw



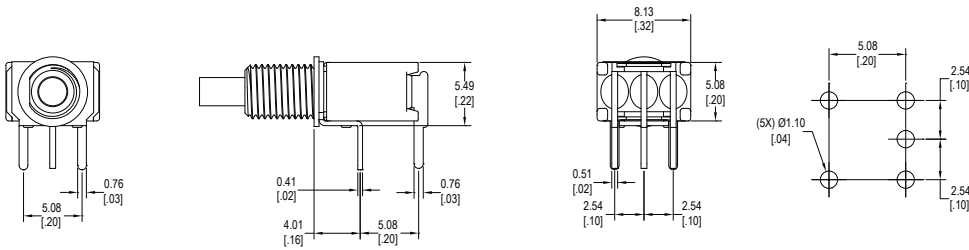
C
single pole, single throw



C
single pole, double throw

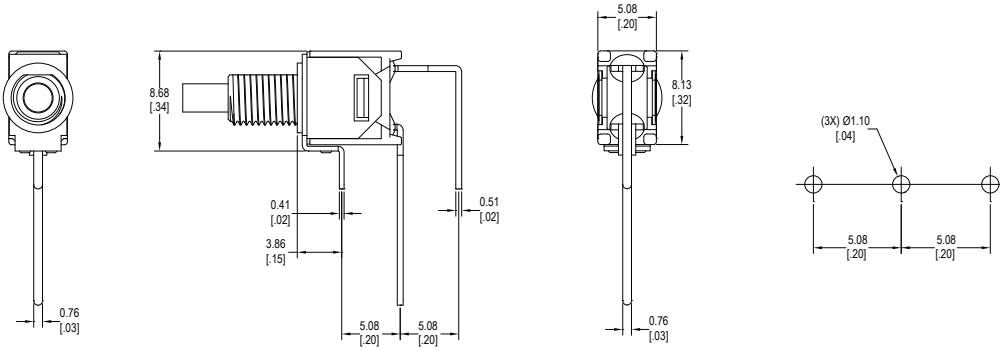


H (HS - Snap In)
Horizontal mount, right angle PC pins, single pole, single throw



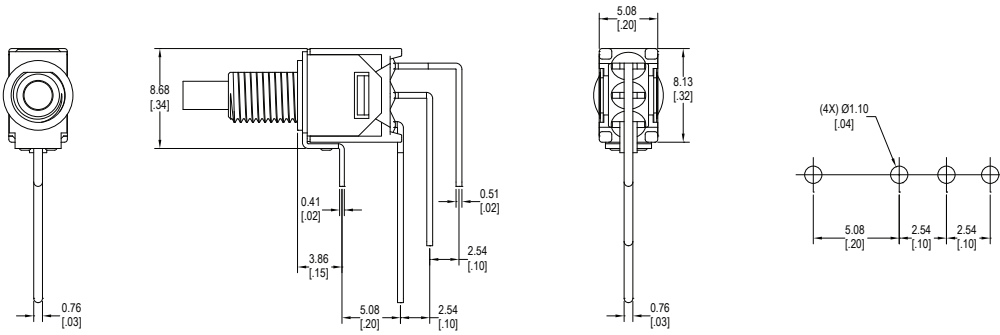
H (HS - Snap In)
Horizontal mount, right angle PC pins, single pole, double throw

Terminal Options



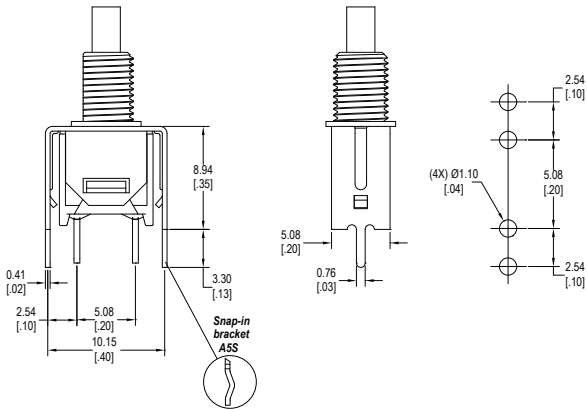
V (VS - Snap In)

Vertical mount, right angle PC pins, single pole, single throw



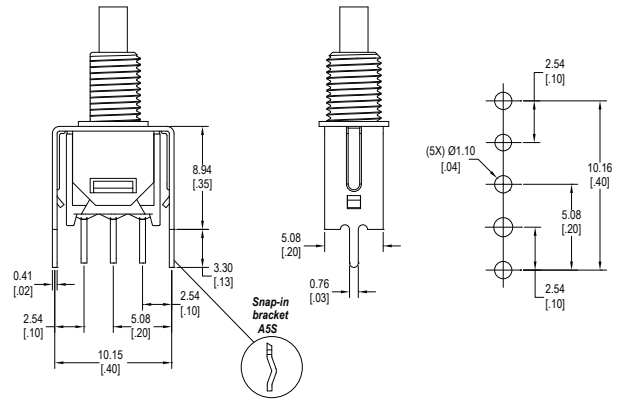
V (VS - Snap In)

Vertical mount, right angle PC pins, single pole, double throw



A5 (A5S - Snap in bracket)

PC pins with support bracket, single pole single throw



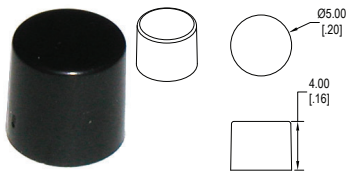
A5 (A5S - Snap in bracket)

PC pins with support bracket, single pole double throw

Contact Options

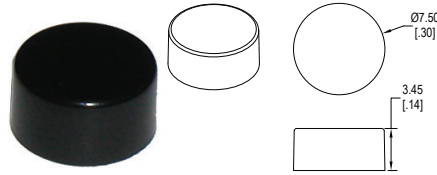
Designator	Contact Material	Terminal Material	Electrical Ratings
Q	Silver Plating	Silver Plating	3A @ 120VAC, 28VDC; 1A @ 250VAC
R	Gold over Nickel Plating	Gold over Nickel Plating	0.4VA max @ 20VAC or VDC max
G	Gold over Silver Plating	Gold over Silver Plating	0.4VA max @ 20VAC or VDC max or 3A @ 120VAC, 28VDC; 1A @ 250VAC

Cap Options



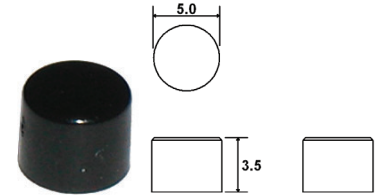
C84_

1 = White, 2 = Black, 3 = Red
Contact Factory for other available colors



C85_

1 = White, 2 = Black, 3 = Red
Contact Factory for other available colors

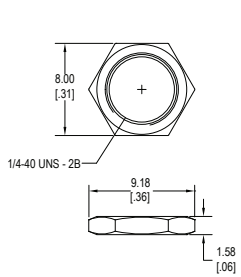


C87_

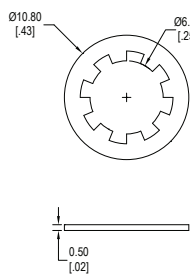
1 = White, 2 = Black, 3 = Red
Contact Factory for other available colors
Only for use with V & V1 Bushings

Hardware

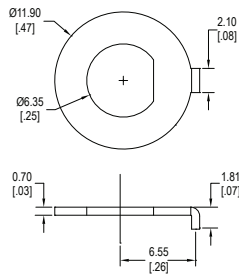
Two hex nuts, one lock washer & one locking ring supplied standard with threaded bushings



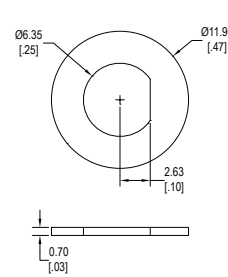
Hex Nut
1/4 - 40



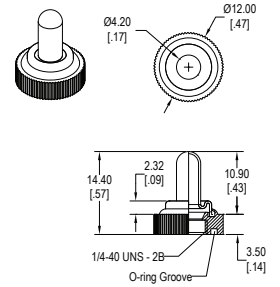
Lock Washer



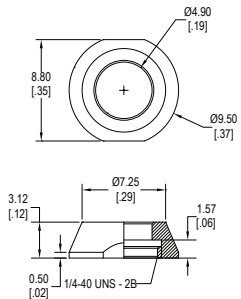
Locking Ring
D Tab



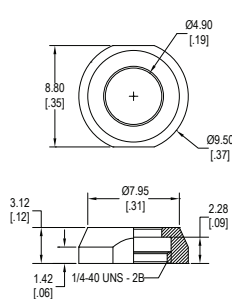
Washer
D Flat



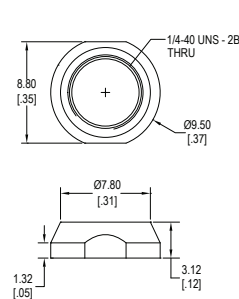
E - Sealed Boot
Knurled Nut



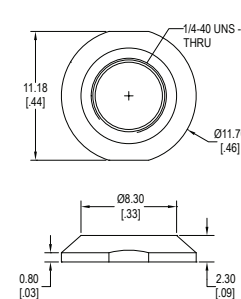
A



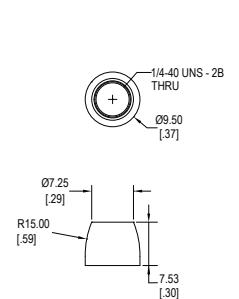
B



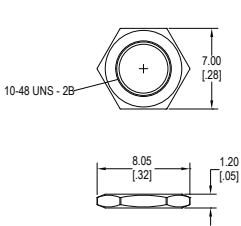
C



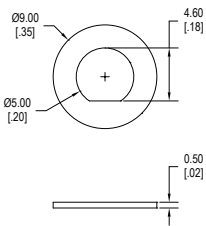
D



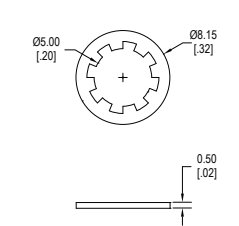
E



#10 Hex Nut



#10 D Flat Washer



#10 Lock Washer