



E197851

27.0 x 21.0 x 35.0 mm

Features

- Switching capacity up to 10A
- Small size and light weight
- Low coil power consumption, High contact load
- Strong resistance to shock and vibration



Contact Data*

Contact Arrangement	2C = DPDT 3C = 3PDT 4C = 4PDT	Contact Resistance	< 50 milliohms initial
Contact Rating	UL 2 & 3 Pole : 10A @ 220VAC & 28VDC, General Purpose 4 Pole : 5A @ 220VAC & 28VDC, General Purpose	Contact Material	AgCdO
	TÜV 2 Pole : 5A @ 220VAC & 28VDC, 100K cycles, 70°C	Max Switching Power	2C, & 3C : 280W, 2200VA 4C : 140W, 110VA
		Max Switching Voltage	300VAC
		Max Switching Current	10A

Coil Data DC Parameters*

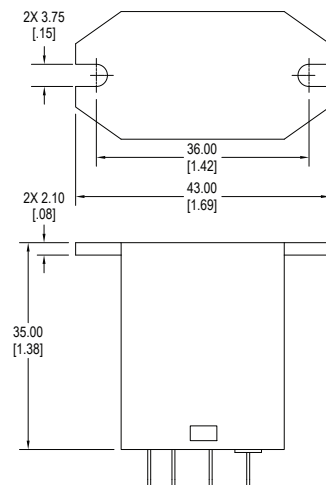
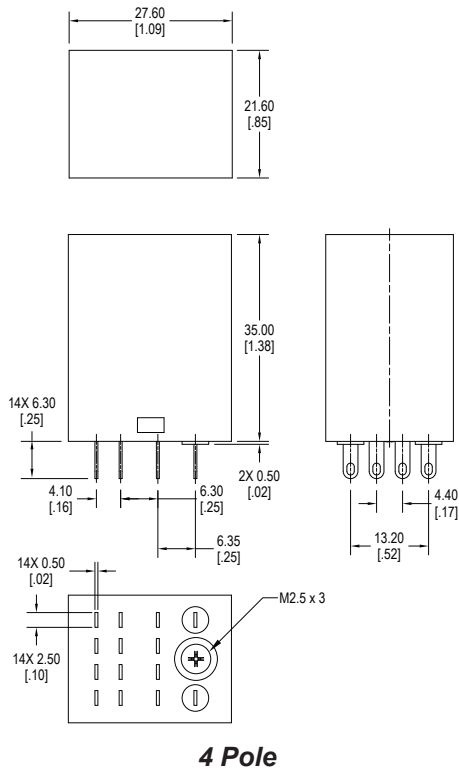
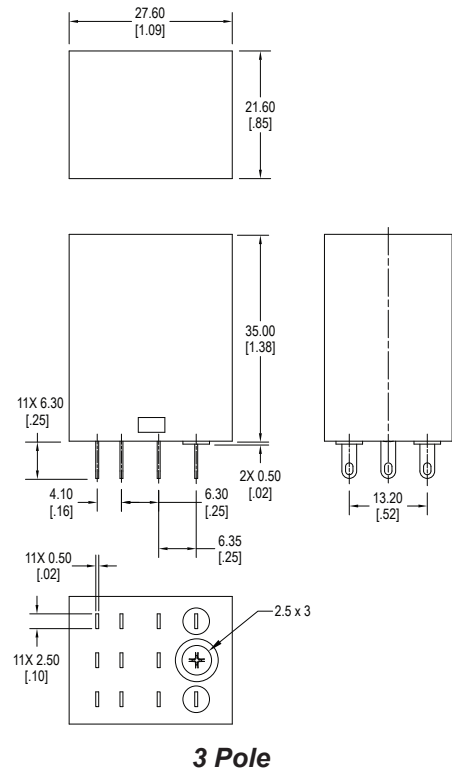
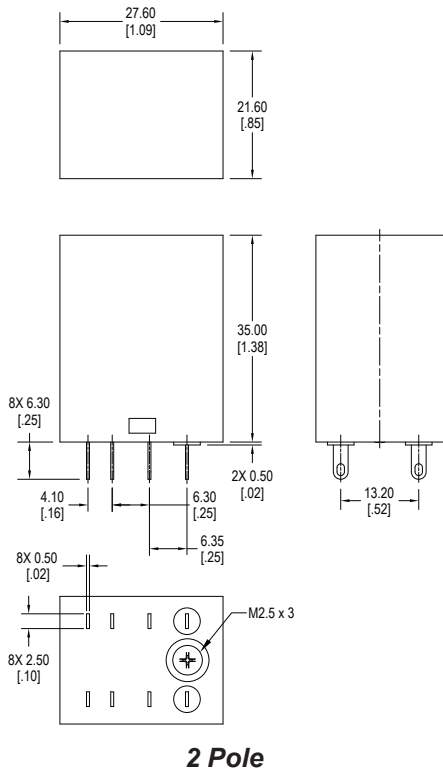
Coil Voltage VDC		Coil Resistance Ω +/- 10%	Pick Up Voltage VDC (max)	Release Voltage VDC (min)	Coil Power W	Operate Time ms	Release Time ms
Rated	Max		75% of rated voltage	10% of rated voltage			
12	13.2	160	9.0	1.2	.9	25	25
24	26.4	640	18.0	2.4			
110	121.0	11000	82.5	11.0			

Coil Data AC Parameters*

Coil Voltage VAC		Coil Resistance Ω +/- 10%	Pick Up Voltage VAC (max)	Release Voltage VAC (min)	Coil Power VA	Operate Time ms	Release Time ms
Rated	Max		80% of rated voltage	30% of rated voltage			
12	13.2	46	9.6	3.6	1.2	25	25
24	26.4	184	19.2	7.2			
110	121.0	3750	88.0	33.0			
120	132.0	4550	96.0	36.0			
220	252.0	14400	176.0	66.0			

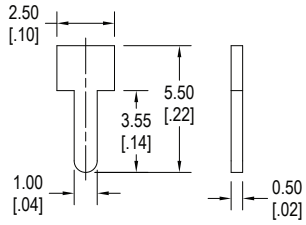
Dimensions

Units = mm

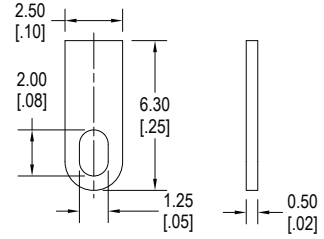




Termination Options



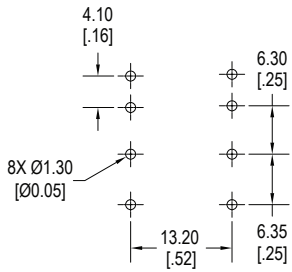
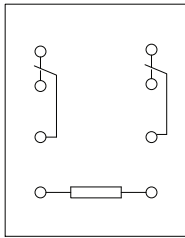
PC Pins



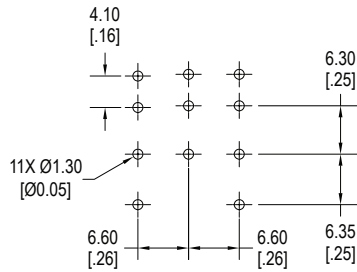
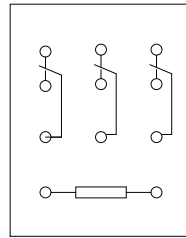
Solder Lugs

Schematics & PC Layouts

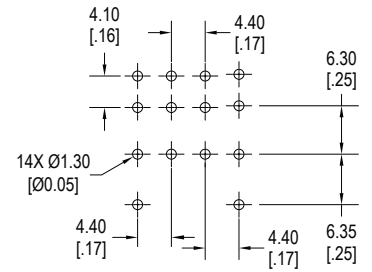
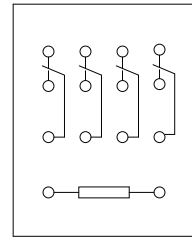
Bottom Views



2C



3C



4C