

Specifications

| | | | |
|--------------------|---------------------------------------|-----------------------|---------------|
| Electrical Ratings | 100mA @ 30VDC | Dielectric Strength | 1000Vrms min |
| Electrical Life | 100,000 cycles typical | Insulation Resistance | >100MΩ min |
| Contact Resistance | <50mΩ initial | Operating Temperature | -40°C to 85°C |
| Actuation Force | 140 ± 50gF | Storage Temperature | -40°C to 85°C |
| Actuator Travel | 1.0mm to lock 1.8mm to full travel | | |

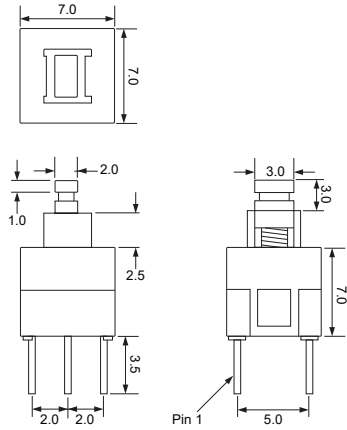
Materials

| | |
|--------------|--------------------------------|
| Actuator | Acetal |
| Housing | PBT |
| Cover | Acetal |
| Latching Pin | Stainless Steel |
| Spring | Stainless Steel |
| Contacts | Phosphor Bronze, Silver Plated |
| Terminals | Brass, Silver Plated |

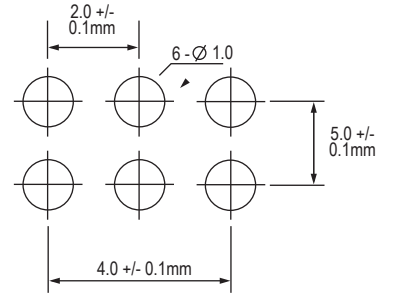
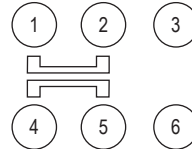
Ordering Information

| | | | |
|--------------------|---|------|---|
| 1. Series | LP2283 | F140 | N |
| LP2283 | | | |
| 2. Actuation Force | F140 = F140gF | | |
| 3. Latching | N = Non-Latching * Contact Factory for Latching Option | | |
| 4. Cap Options | Cap Colors | | |
| Blank = No Cap | | | |
| C01 | **See Cap Options for color availability | | |
| C02 | | | |
| C03 | | | |
| C04 | | | |
| C05 | | | |

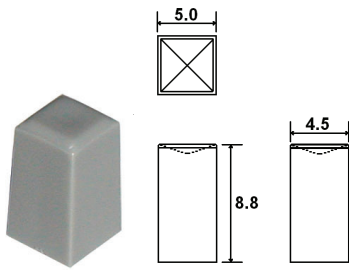
Dimensions



Schematic & PC Layout

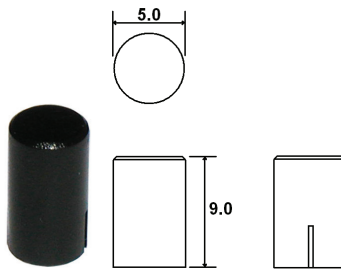


Cap Options



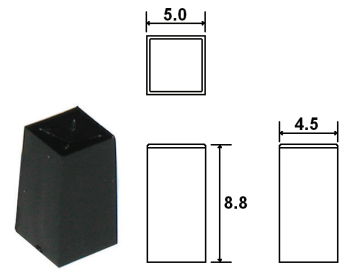
C01_

1 = White, 2 = Black, 3 = Red, 9 = Light Gray
Contact Factory for other available colors



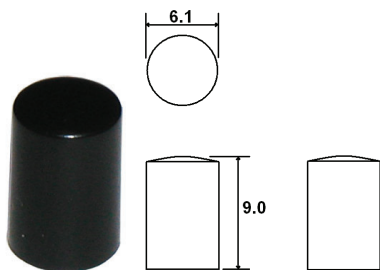
C02_

1 = White, 2 = Black, 3 = Red, 9 = Light Gray
Contact Factory for other available colors



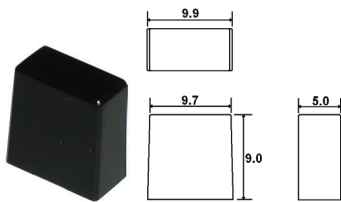
C03_

1 = White, 2 = Black, 3 = Red, 9 = Light Gray
Contact Factory for other available colors



C04_

1 = White, 2 = Black, 3 = Red, 9 = Light Gray
Contact Factory for other available colors



C05_

1 = White, 2 = Black, 3 = Red, 9 = Light Gray
Contact Factory for other available colors