

## Specifications

Electrical Ratings	100mA @ 30VDC	Dielectric Strength	1000Vrms min
Electrical Life	100,000 cycles typical	Insulation Resistance	>100MΩ min
Contact Resistance	<50mΩ initial	Operating Temperature	-40°C to 85°C
Actuation Force	260 ± 50gF	Storage Temperature	-40°C to 85°C
Actuator Travel	1.5mm to lock 2.5mm to full travel		

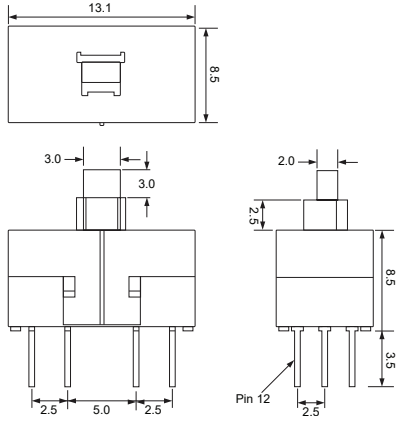
## Materials

Actuator	Acetal
Housing	PBT
Cover	Acetal
Latching Pin	Stainless Steel
Spring	Stainless Steel
Contacts	Phosphor Bronze, Silver Plated
Terminals	Brass, Silver Plated

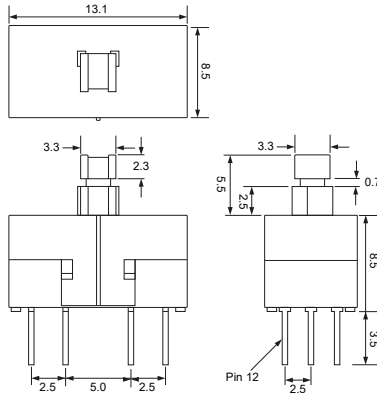
## Ordering Information

1. Series	LP4203	F260	L	Z	A																																				
LP4203																																									
2. Actuation Force	F260 = F260gF																																								
3. Latching	N = Non-Latching * Contact Factory for Latching Option																																								
4. Actuation Options	X = 2mm x 3mm head Y = 3.3mm square head Z = 2.8mm square head																																								
5. Termination	A = PC Pins, straight E = PC Pins with bend																																								
6. Cap Options	<table border="0"> <tr> <td>Blank = No Cap</td> <td></td> <td></td> <td></td> <td></td> <td></td> </tr> <tr> <td>C01</td> <td>C11</td> <td>C17</td> <td></td> <td></td> <td></td> </tr> <tr> <td>C02</td> <td>C12</td> <td>C18</td> <td></td> <td></td> <td></td> </tr> <tr> <td>C03</td> <td>C13</td> <td>C19</td> <td></td> <td></td> <td></td> </tr> <tr> <td>C04</td> <td>C15</td> <td>C22</td> <td></td> <td></td> <td></td> </tr> <tr> <td>C05</td> <td>C16</td> <td>C26</td> <td></td> <td></td> <td></td> </tr> </table>					Blank = No Cap						C01	C11	C17				C02	C12	C18				C03	C13	C19				C04	C15	C22				C05	C16	C26			
Blank = No Cap																																									
C01	C11	C17																																							
C02	C12	C18																																							
C03	C13	C19																																							
C04	C15	C22																																							
C05	C16	C26																																							
	Cap Colors: ** See Cap Options for color availability ** Caps available with Y & Z actuators only																																								

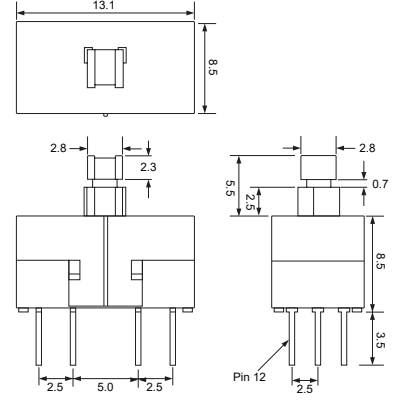
### Dimensions



X

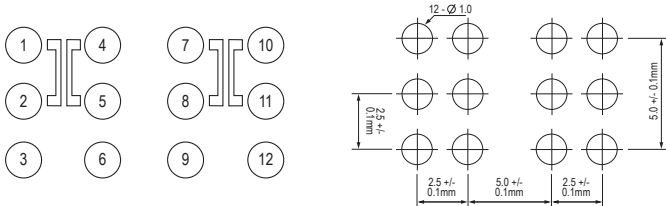


Y

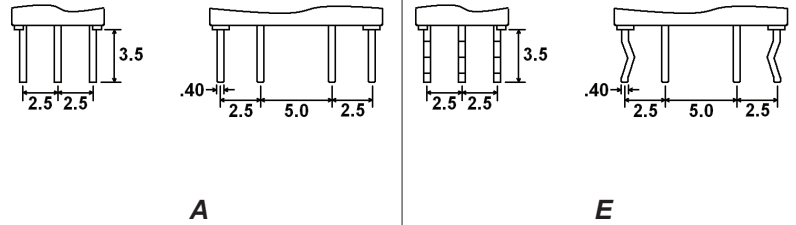


Z

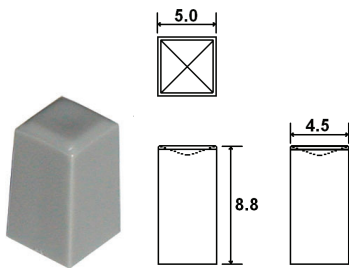
### Schematic & PC Layout



### Termination

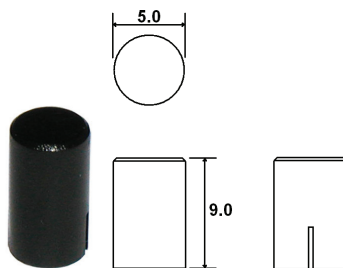


### Cap Options for Z Actuator



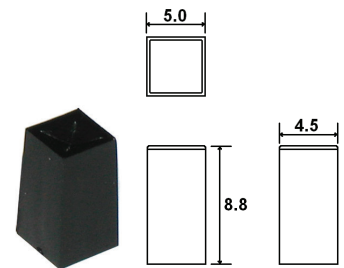
C01\_

1 = White, 2 = Black, 3 = Red, 9 = Light Gray  
Contact Factory for other available colors



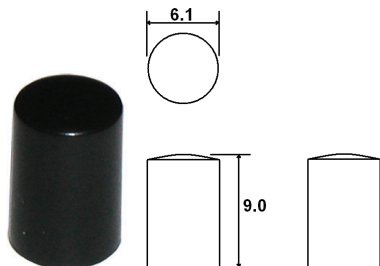
C02\_

1 = White, 2 = Black, 3 = Red, 9 = Light Gray  
Contact Factory for other available colors



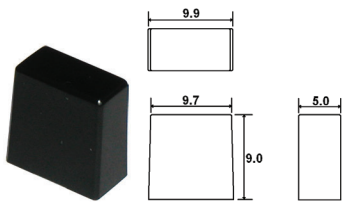
C03\_

1 = White, 2 = Black, 3 = Red, 9 = Light Gray  
Contact Factory for other available colors



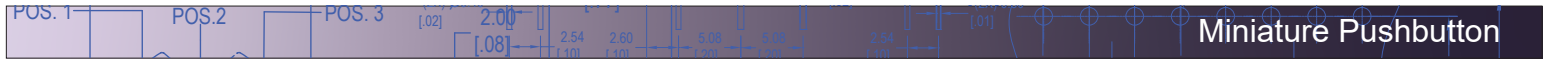
C04\_

1 = White, 2 = Black, 3 = Red, 9 = Light Gray  
Contact Factory for other available colors

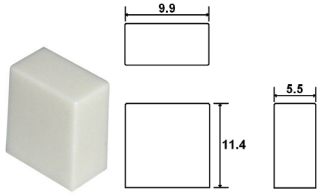


C05\_

1 = White, 2 = Black, 3 = Red, 9 = Light Gray  
Contact Factory for other available colors

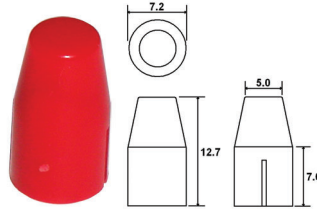


**Cap Options for Y Actuator**



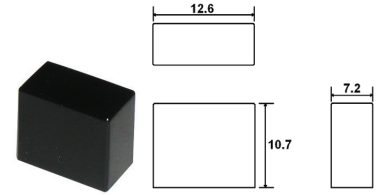
**C11\_**

1 = White, 2 = Black, 3 = Red, 9 = Light Gray  
Contact Factory for other available colors



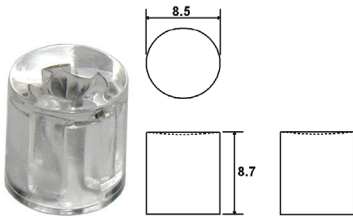
**C12\_**

1 = White, 2 = Black, 3 = Red, 9 = Light Gray  
Contact Factory for other available colors



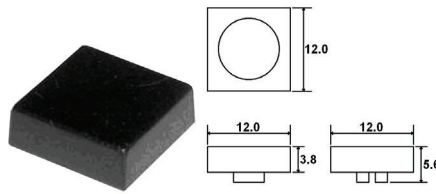
**C13\_**

1 = White, 2 = Black, 3 = Red, 9 = Light Gray  
Contact Factory for other available colors



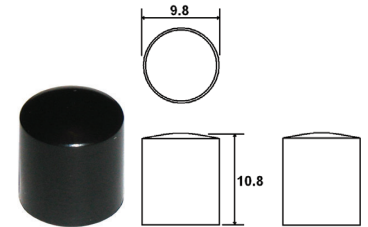
**C15\_**

2 = Black, 0 = Clear  
Contact Factory for other available colors



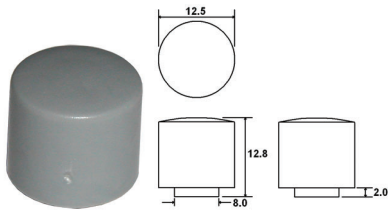
**C16\_**

1 = White, 2 = Black, 3 = Red, 7 = Blue  
Contact Factory for other available colors



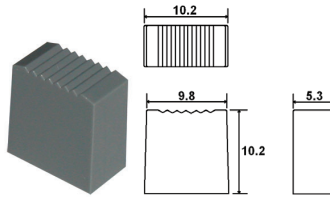
**C17\_**

2 = Black, 0 = Clear  
Contact Factory for other available colors



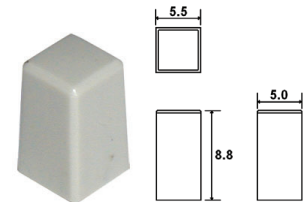
**C18\_**

1 = White, 2 = Black, 9 = Light Gray  
Contact Factory for other available colors



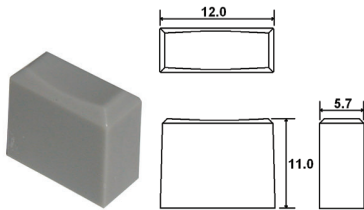
**C19\_**

1 = White, 2 = Black, 3 = Red, 8 = Dark Gray  
Contact Factory for other available colors



**C22\_**

2 = Black, 8 = Dark Gray, 9 = Light Gray  
Contact Factory for other available colors



**C26\_**

1 = White, 2 = Black, 3 = Red, 9 = Light Gray  
Contact Factory for other available colors