

## Specifications

Electrical Ratings	200mA @ 30VDC	Dielectric Strength	1000Vrms min
Electrical Life	10,000 cycles typical	Insulation Resistance	>100MΩ min
Contact Resistance	<50mΩ initial	Operating Temperature	-40°C to 85°C
Actuation Force	200 ± 100gF	Storage Temperature	-40°C to 85°C
Actuation Travel	3.0mm total		

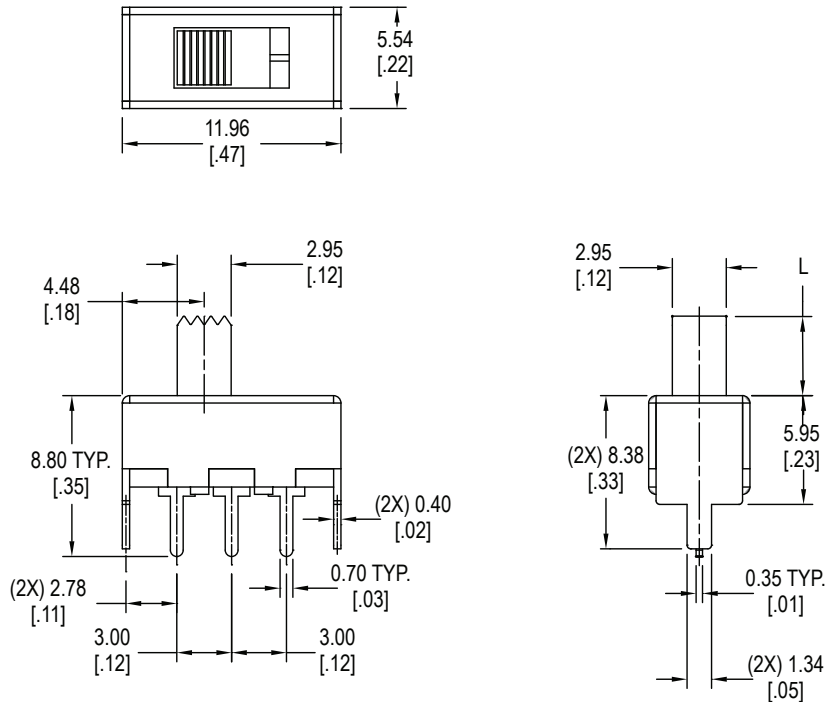
## Materials

Actuator	6/6 Nylon
Housing	Steel
Base	Phenolic
Contacts	Phosphor Bronze, Silver Plated
Terminals	Brass, Silver Plated

## Ordering Information

1. Series	MS1202	L6
MS1202		
2. Actuator Length		
L4 = 4mm		
L6 = 6mm		

## Dimensions



## Schematic & PC Layout

