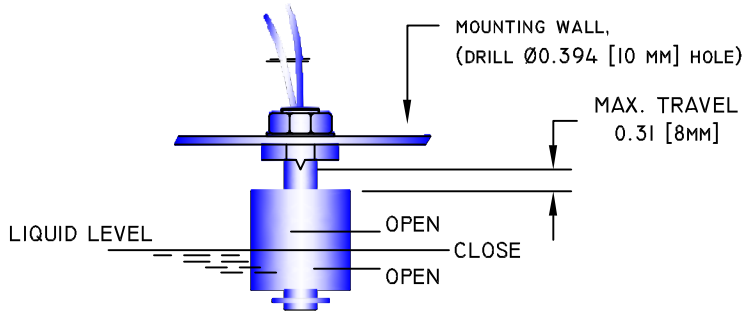
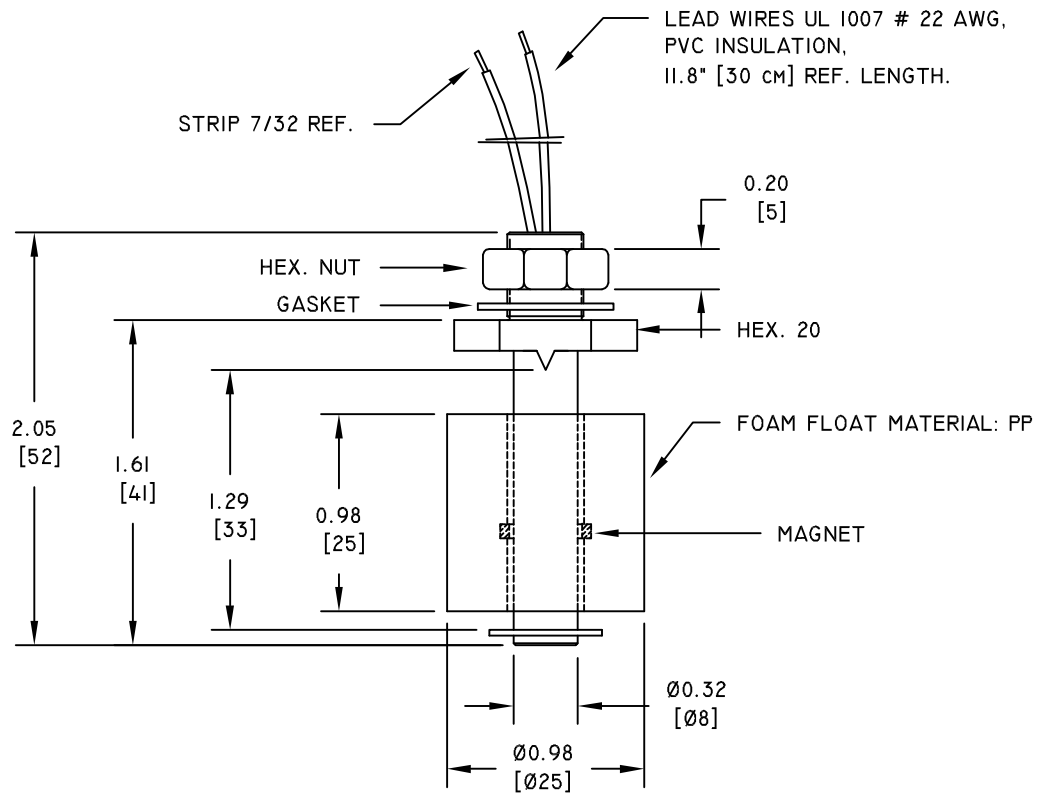


REV.	DATE	REVISION DESCRIPTION	DR.
A	9/02/03	ORIGINAL	L.L.

- NOTES:
1. ELECTRICAL:
 - 1.1 SWITCHING CAPACITY: MAX. 50 WATT.
 - 1.2 SWITCHING CURRENT: 0.5 AMP.
 - 1.3 CARRY CURRENT: MAX. 1 AMP.
 - 1.4 SWITCHING VOLTAGE: 240 VAC.
 - 1.5 BREAKDOWN VOLTAGE: 200 VDC.
 2. OPERATION:
 - 2.1 CONTACT ARRANGEMENT SPST, REVERSIBLE SWITCH ACTION.
 - 2.2 AVOID MAGNETIC INTERFERENCE.
 - 2.3 OPERATING TEMPERATURE -20° C TO 80° C.
 - 2.4 MAX. PRESSURE: ATMOSPHERE.
 - 2.5 SUITABLE SPECIFIC GRAVITY OF LIQUID 0.8.
 3. FINISH:
 - 3.1 ENCAPSULATED AND POTTED IN PLASTIC CASE.
 - 3.2 LEAD WIRES UL 1007, #22 AWG, PVC INSULATION.
 - 3.3 WEIGHT 18 GR.



WORKING POSITION: VERTICAL

COMUS INTERNATIONAL
 454 ALLWOOD ROAD, CLIFTON, NEW JERSEY 07012 TEL. (973) 777-6900

ENGINEERING		
QUALITY		
PRODUCTION		
APPROVAL	SIGNATURE	DATE

UNSPECIFIED TOLERANCES DECIMAL: .XX ±.01 [.254] .XXX ±.005 [.127] FRACTIONAL: ± 1/64 [.397] ANGULAR: ± 1/2°	REF.:	SCALE: NONE	DRAWN BY: L.L.	DATE 09/02/2003
	TITLE: FLOAT SWITCH			
TYPE: SALE		DRAWING #: VFP-21		