

GT Series Relay Sockets

Description 8 and 14 Pin Midget Sockets, DIN Rail Mountable

Electrical Rating • 300 Volts, 10 Amps (SPDT and DPDT models also carry the additional rating of 150 Volts, 15 Amps)

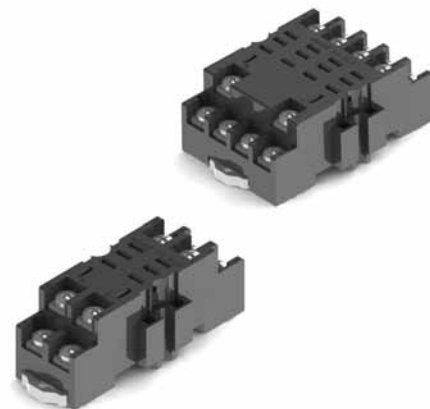
Construction

- Contacts** • Brass, Nickel Plated
- Screws** • Binder Head, 6 - 32 x 1/4" Steel, Zinc Plated
- Pressure Clamp, 6 - 32 x 5/16" Steel, Zinc Plated, Wire Range #12 - #20 Solid or Stranded
- Molding** • Break Resistant Thermoplastic Black Standard, Grey Available

Agency Approvals • UL recognized, File No. E60008
• CSA certified, File No. LR29513
• CE
• ROHS



socketTAC



GT Series Ordering Code

Part #	Description	Terminal Type
GT05-PC	SPDT, 5 Pin Midget (Fig. 1)	Pressure Clamp Screws
GT08-PC	DPDT, 8 Pin Midget (Fig. 1)	Pressure Clamp Screws
GT14-PC	4PDT, 14 Pin Midget (Fig. 2)	Pressure Clamp Screws

Accessories

Part #	Description
	(Refer to the accessories pages 24-31)
C-103-PM	Prepunched Aluminum DIN Rail (1 Meter Lengths)
C-108-PM	Prepunched Raised Aluminum DIN Rail (1 Meter Lengths)
C-108-2PM	Prepunched Raised Aluminum DIN Rail (2 Meter Lengths)
HDB-4	Hold Down Spring for GT05-PC and GT08-PC
HDB-19	Hold Down Spring for GT14-PC

