

## C-FRAME SOLENOID

Two position linear solenoid with C-frame construction.

### Features

- Economical construction
- AC solenoids and DC solenoids available
- Tape Wrapped coils on most models
- UL approval on many models

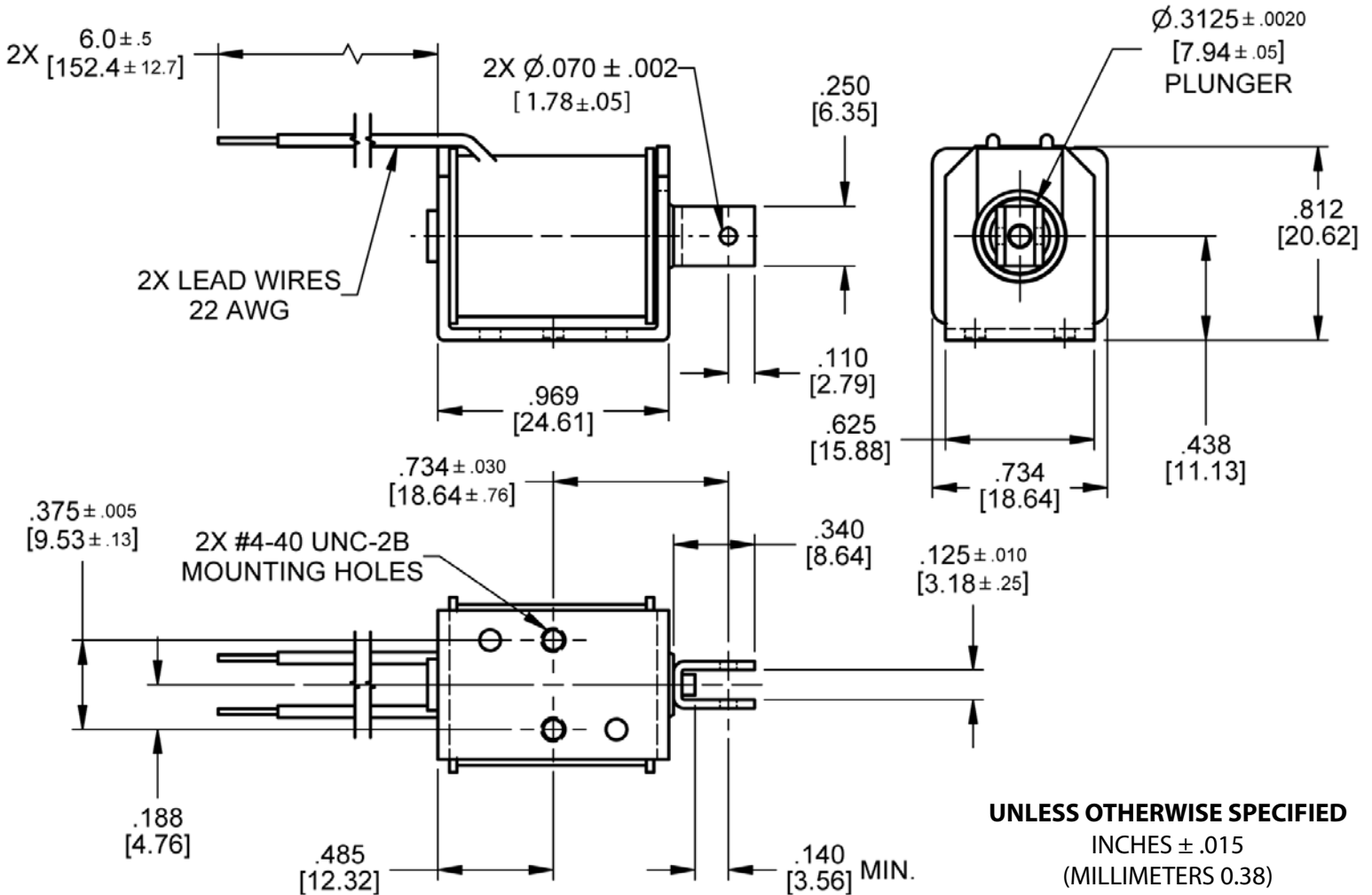


Electrical Specifications	
Coil Voltages	6, 12, 24, 120, 240 VAC   6, 12, 24, 110 VDC
Coil Power	4.7 VA Continuous, 14 VA Intermittent, 47 VA Pulse, 3.7 Watts Continuous, 11 Watts Intermittent, 42 Watts Pulse
Coil Termination	Wire leads 22 AWG (standard)
Duty Cycle	Continuous, intermittent, pulse (see standard part numbers on page 4)
Coil Treatment	Tape Wrapped
Insulation Class	Class A Rating - 105°C (221°F) Max.
Dielectric Strength	30 Volts and Under: 500 VRMS Over 30 Volts: 1000 VRMS plus 2X rated voltage for 1 minute
Mechanical Specifications	
Size	0.969" [24.6] (L) x 0.734" [18.6] (W) x 0.812" [20.6] (H) (See dimensional drawing on page 2)
Forces	See page 3 for force curves
Plunger Diameter	Ø 0.3125" [7.9]
Plunger Guide Material	Plastic
Mounting	2X #4-40 UNC-2B Mounting Holes
Weight	Plunger - 0.3 oz [9.0 gms], Total - 1.5 oz [42.5 gms]
Life Expectancy	250,000 Cycles (Dependent on load conditions)
Agency Approval	
	UL File No. E57982 For Continuous Duty UL File No. E74443 For Insulation Systems S105

Dimensions: inches [mm]

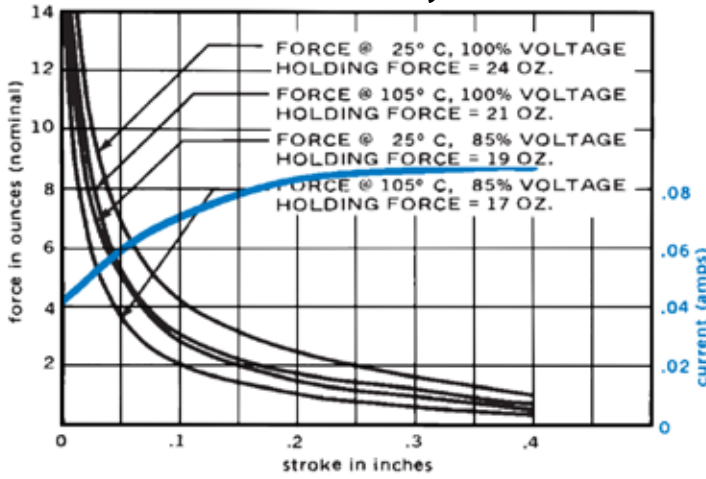
## Dimensional View

Units: Inches [mm]

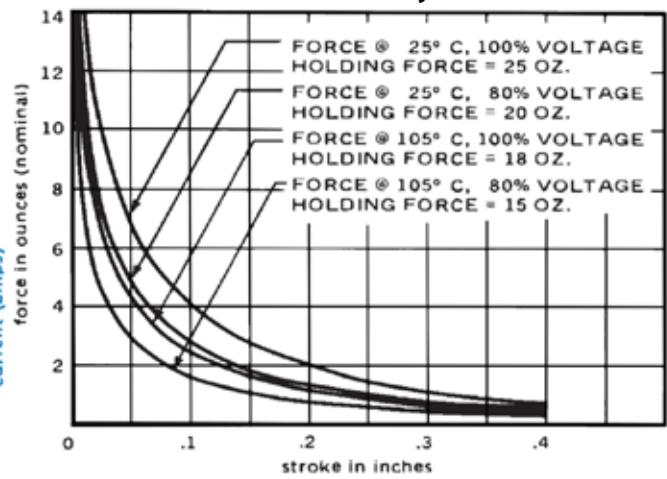


## Force Curves

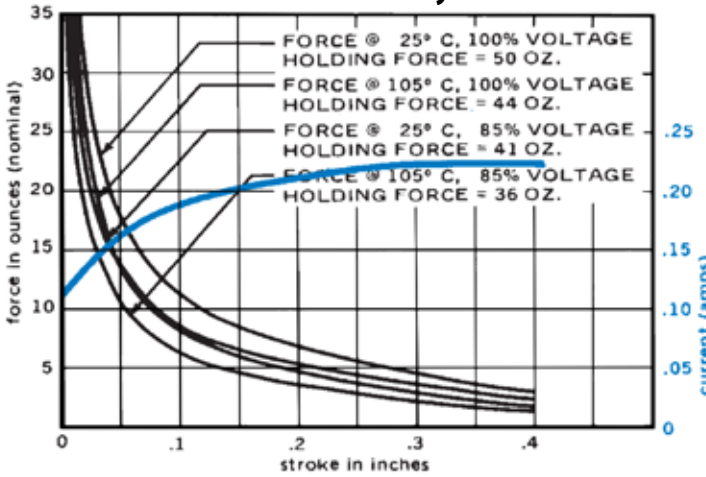
### AC Continuous Duty - 4.7 VA



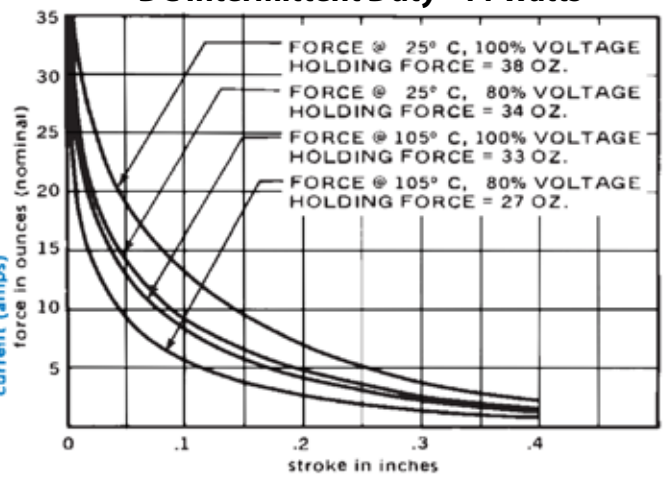
### DC Continuous Duty - 3.7 Watts



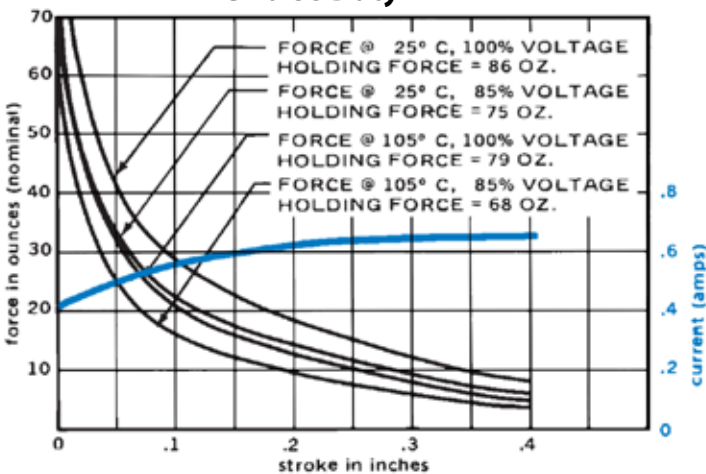
### AC Intermittent Duty - 14 VA



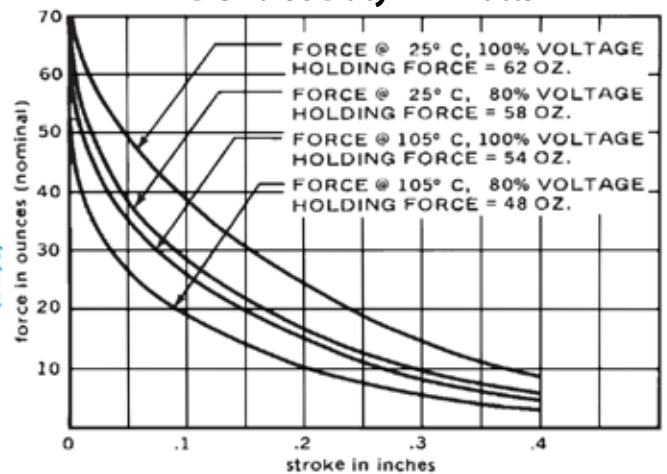
### DC Intermittent Duty - 11 Watts



### AC Pulse Duty - 47 VA



### DC Pulse Duty - 42 Watts



Standard intermittent duty cycle at nominal voltage is 25%, with one (1) minute maximum "ON" and three (3) minutes minimum "OFF" in a repetitive cycle. Standard Pulse duty cycle is 10% with 100 milliseconds "ON" and 900 milliseconds "OFF".  
NOTE: Approx 36 sq. in. Heat Sink Required

## Standard Part Numbers

Parts No.	Voltage	Duty Cycle	Power	Resistance (ohms)	Operation	Typical Force oz [N] 100% Voltage, 77°F [25°C], Stroke @				
						0.000"	0.125"	0.250"	0.500"	0.750"
53747-80	6 VAC	Continuous	4.7 VA	3.23	Pull	24 [6.7]	3.5 [1.0]	2 [0.6]	0 [0.0]	0 [0.0]
53747-81	12 VAC			13.1						
53747-82	24 VAC			52.1						
53747-84	120 VAC			1273						
53747-85	240 VAC			5100						
53747-86	6 VAC	Intermittent	14 VA	1.15	Pull	50 [13.9]	9.5 [2.6]	5.5 [1.5]	0 [0.0]	0 [0.0]
53747-87	12 VAC			4.76						
53747-88	24 VAC			19.1						
53747-90	120 VAC			480						
53747-91	240 VAC			1940						
53747-92	6 VAC	Pulse	47 VA	0.445	Pull	86 [23.9]	25 [7.0]	15 [4.2]	0 [0.0]	0 [0.0]
53747-93	12 VAC			1.77						
53747-94	24 VAC			7						
53747-96	120 VAC			183						
53747-97	240 VAC			738						
53746-80	6 VDC	Continuous	3.7 Watts	10.4	Pull	25 [7.0]	3 [0.8]	1.5 [0.4]	0 [0.0]	0 [0.0]
53746-81	12 VDC			41.6						
53746-82	24 VDC			168						
53746-84	110 VDC			3265						
53746-86	6 VDC	Intermittent	11 Watts	3.23	Pull	38 [10.6]	12 [3.3]	5 [1.4]	0 [0.0]	0 [0.0]
53746-87	12 VDC			13.1						
53746-88	24 VDC			52.1						
53746-90	110 VDC			1125						
53746-92	6 VDC	Pulse	42 Watts	0.8	Pull	62 [17.2]	34 [9.5]	19 [5.3]	0 [0.0]	0 [0.0]
53746-93	12 VDC			3.23						
53746-94	24 VDC			13.1						
53746-96	110 VDC			282						

(\*) Normally Stocked

Non stocked items require a minimum order