

SCHEMATIC

SPECIFICATIONS

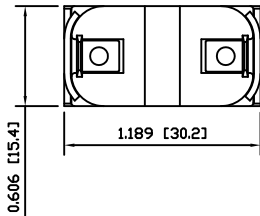
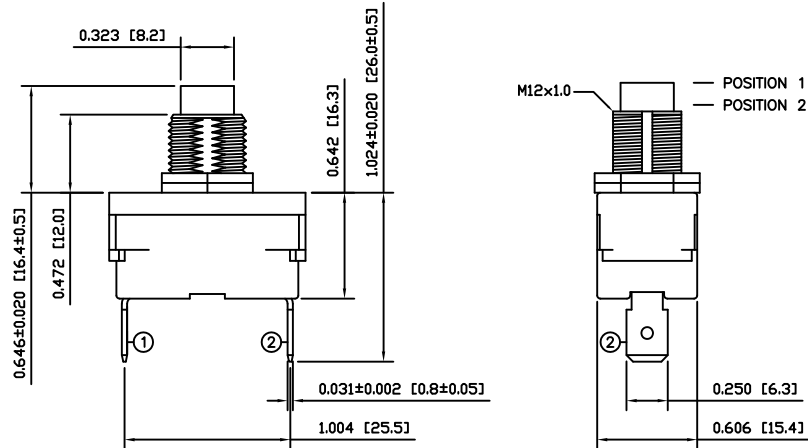
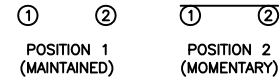
FUNCTION:  
1P1T OFF-(ON)

RATINGS:  
16A 125VAC [cURus]  
10A 250VAC [cURus]

ELECTRICAL LIFE:  
6,000 Cycles [cURus]

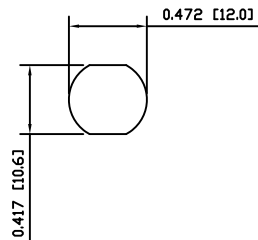
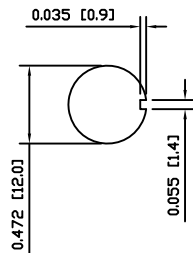
TEMPERATURE:  
Operating: -20°C to 65°C [cURus]

APPROVALS:



SUGGESTED PANEL CUTOUT

ALTERNATE PANEL CUTOUT



MATERIALS

- BODY:  
Phenolic, UL94 V-0
- ACTUATOR:  
Nylon
- BUSHING:  
Steel
- CONTACTS:  
Silver Plated Copper
- TERMINALS:  
Brass



HY55-01113

DIMENSIONS		DRAWING NUMBER		DATE		REVISION	
INCHES [MILLIMETERS]		34-HY5501113		NOVEMBER 5, 2009		A	
GENERAL TOLERANCES		SCALE		PROJECTION			
±0.008 [±0.2] / ±1'		DRAWING NOT TO SCALE		FIRST ANGLE			

THE INFORMATION CONTAINED IN THIS DOCUMENT IS PROPRIETARY TO E-SWITCH AND IS NOT TO BE COPIED OR TRANSFERRED				INITIAL RELEASE		PCRD019S		09/11/05		CAB	
REV.				DESCRIPTION		PCR		DATE		DRAWN BY	