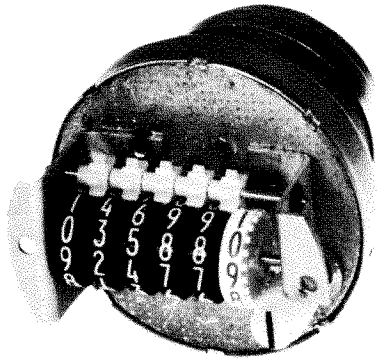
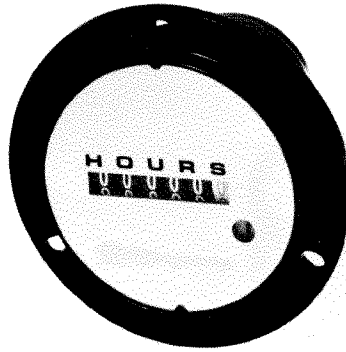


# EG and EF

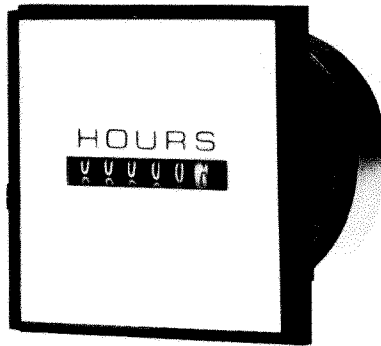
## AC ELAPSED TIME INDICATORS



**EG SERIES**



**EF13 SERIES**



**EF27 SERIES**

### DESCRIPTION

These series of running time meters feature a six-digit readout with no reset capabilities, making them virtually tamper proof. The EG series, a basic timer without housing or bezel, is designed for mounting behind a panel while the EF series is provided with its own bezel. The EF13 has a round bezel while the EF27 has a square bezel. The EG series and the EF13 units are provided with an indicator to show the unit is operating. The synchronous motor provides accuracy equal to that of the power line frequency.

### APPLICATION

The EF and EG elapsed time indicators are basic units designed for use in normal environments. They are applied anywhere there is a need to accumulate running time on AC powered equipment. Typical applications include: manufacturing machinery, HVAC equipment, pumps, compressors, and generators.

### OPERATION

There are no operator controls associated with any of these timers. When power is applied, time is accumulated on the digital readout.

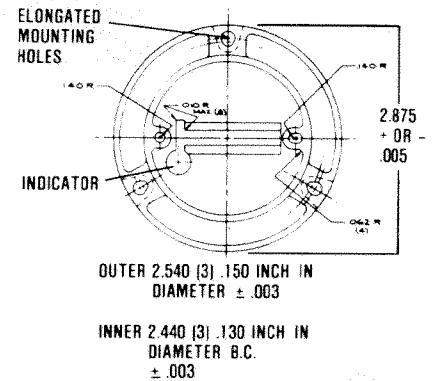
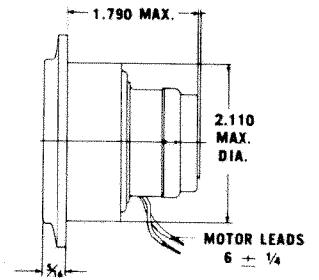
### SPECIFICATIONS

Wiring	6 inch leads
Voltage	120V/60Hz standard. Consult factory for other voltages and frequencies.
Agency Approvals	EG-CSA EF-UL, CSA

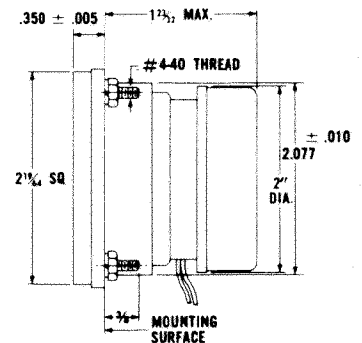
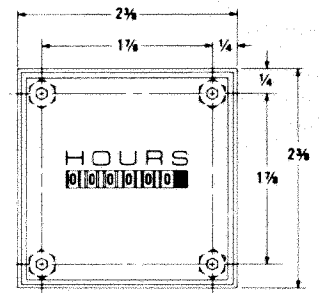
### STANDARD MODELS

MODEL NUMBER	INDICATES
EG 1333	min. & tenths
EG 1335	hr. & tenths
EF 1333	min. & tenths
EF 1335	hr. & tenths
EF 2733	min. & tenths
EF 2735	hr. & tenths

### EF13 DIMENSIONS



### EF27 DIMENSIONS



### EG DIMENSIONS

