

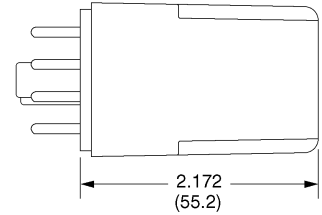
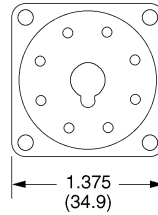


KANSON ELECTRONICS, INC.

ACCESSORIES

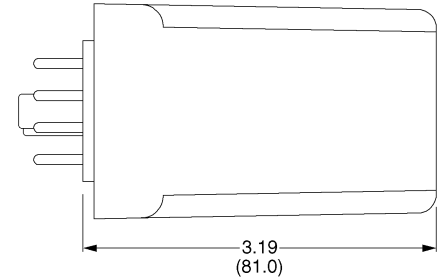
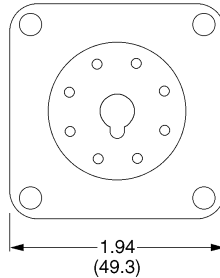
OUTPUT DEVICES

RP-103A 1.0A N.O. Solid State, 8-Pin, Plug-in



RP-101 and RP-103A

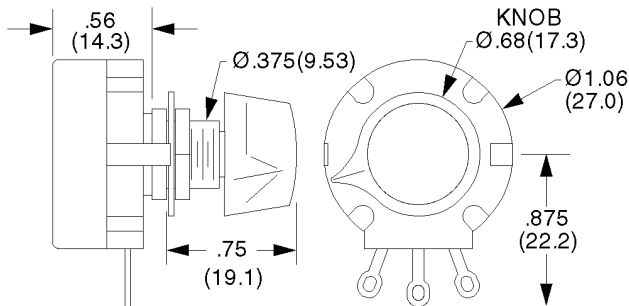
RP-101 24 VDC, DPDT Relay, 8-Pin, Plug-in



RP-104 1.5A N.O. Solid State, 8-Pin, Plug-in
RP-105 1.5A N.C. Solid State, 8-Pin, Plug-in
RP-106 1.5A 1 N.O., 1 N.C. Solid State, 8-Pin, Plug-in

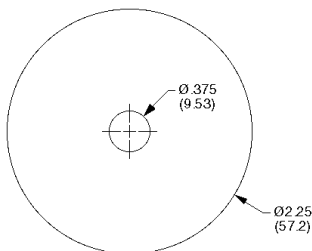
RP-104, RP-105 and RP-106

POTENTIOMETERS AND RELATED HARDWARE



RP-201 to RP-210

- RP-201 10kΩ
- RP-202 25kΩ
- RP-203 50kΩ
- RP-204 100kΩ
- RP-205 250kΩ
- RP-206 500kΩ
- RP-207 1.0MΩ
- RP-208 2.5MΩ
- RP-209 5.0MΩ
- RP-210 10MΩ



RP-216 Reference dial for remote pots



RP-217 Locking attachment for RP-201 to RP-210

ACCESSORIES

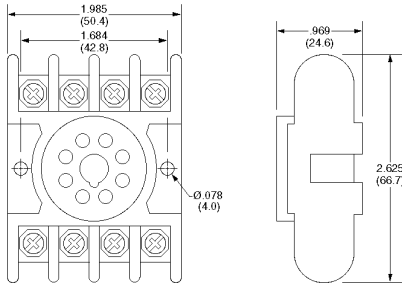


KANSON ELECTRONICS, INC.

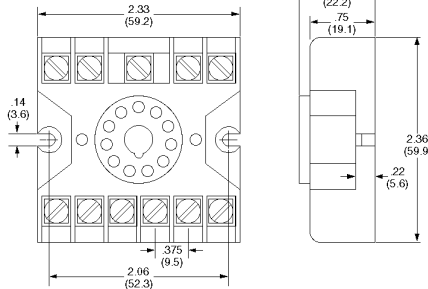
SOCKETS



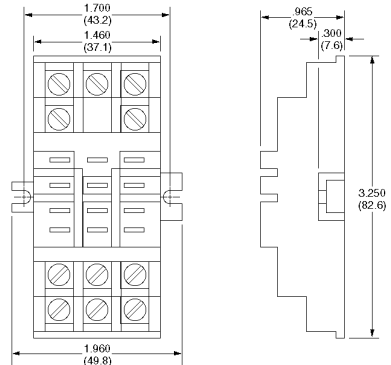
RP-302 8 pin socket, panel mount only



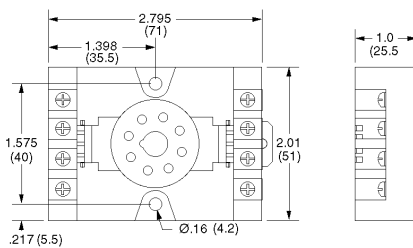
RP-303 11 pin socket, panel mount only



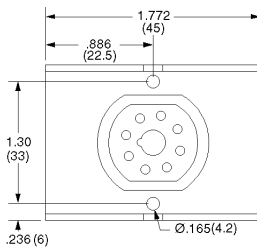
RP-304 11 pin flat terminal socket, panel mount only



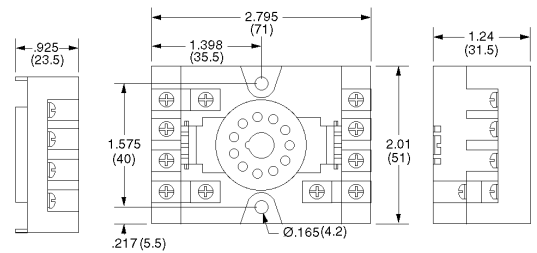
RP-320 8 pin socket, DIN rail or panel mount, with hold-down clips



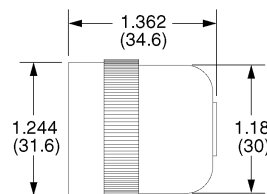
RP-321 8 pin reversed socket, permits wiring from rear of unit when panel mounting



RP-322 11 pin socket, DIN rail or panel mount, with hold-down clips



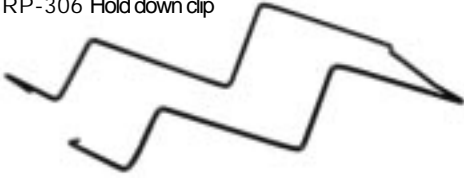
RP-324 11 pin cable socket



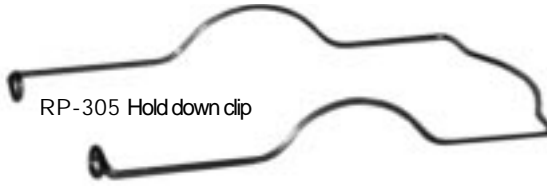
RP-323 8 pin cable socket (not shown)

MISCELLANEOUS HARDWARE

RP-306 Hold down clip



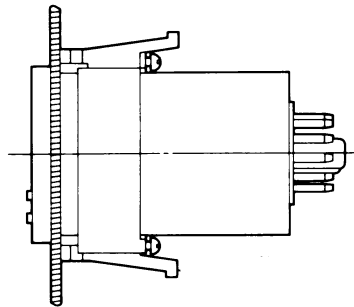
RP-305 Hold down clip



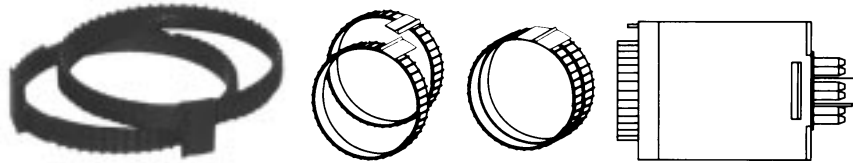
RP-311 Timing indication light



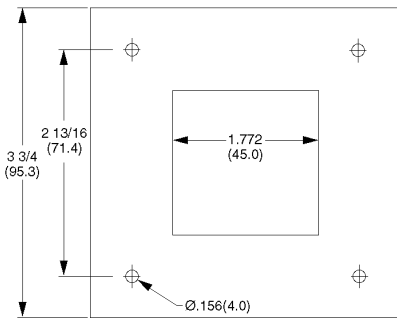
RP-325 Panel mounting clamp for DIN timers



RP-326 Protective cover, 1094, 1095, 1096 or 1105C only



RP-327 Stop/locking rings, fits over dial on DIN timers. For units with numbers that end in -1 or -2 only.



Material : 16 ga steel, gray primer

RP-330 Adapter plate permits replacement of ATC 305, 310, 325 & 335 and Eagle Signal CA, CE, CD, CT, CX, HG, HQ, HP & HZ products with the ISSC Model 1068, 1073, 1081, 1090, 1094, 1095, 1096, & 1105C.

No modification of the existing panel cut-out is required. Simply remove the existing timer or counter and install the ISSC RP-330 in its place using 6-32 hardware. The appropriate ISSC timer or counter may now be installed into the "new" panel opening by utilizing an ISSC model RP-325 panel mount clamp. (one RP-325 is included with digital models but must be ordered separately for analog models)



RP-503 2m cable with connector for 1248A or 1250
RP-503-5 same as above 5m long

