

**H MICRO SWITCH**  
 FREEPORT, ILLINOIS, U.S.A.  
 A DIVISION OF HONEYWELL

**SWITCH-BASIC**

CATALOG LISTING  
**11ISM244**

FED. MFG. CODE 91929

11ISM244

M

DRAWING NUMBER

ISSUE  
 X 6  
 X 5  
 X 4

REPLACES

SR12442

RELEASE NO.

CHECK

REVISIONS

A	0024706	GFS	28 SEPT 68
B	C029449	R C R	13 SEPT 72
C	00-36673	K S W	19 FEB 76
D	44662	C O	4 4 662
E	C079612	R J W	9 SEPT 78
		S A D	11 APR 95

CHECK

CHECK

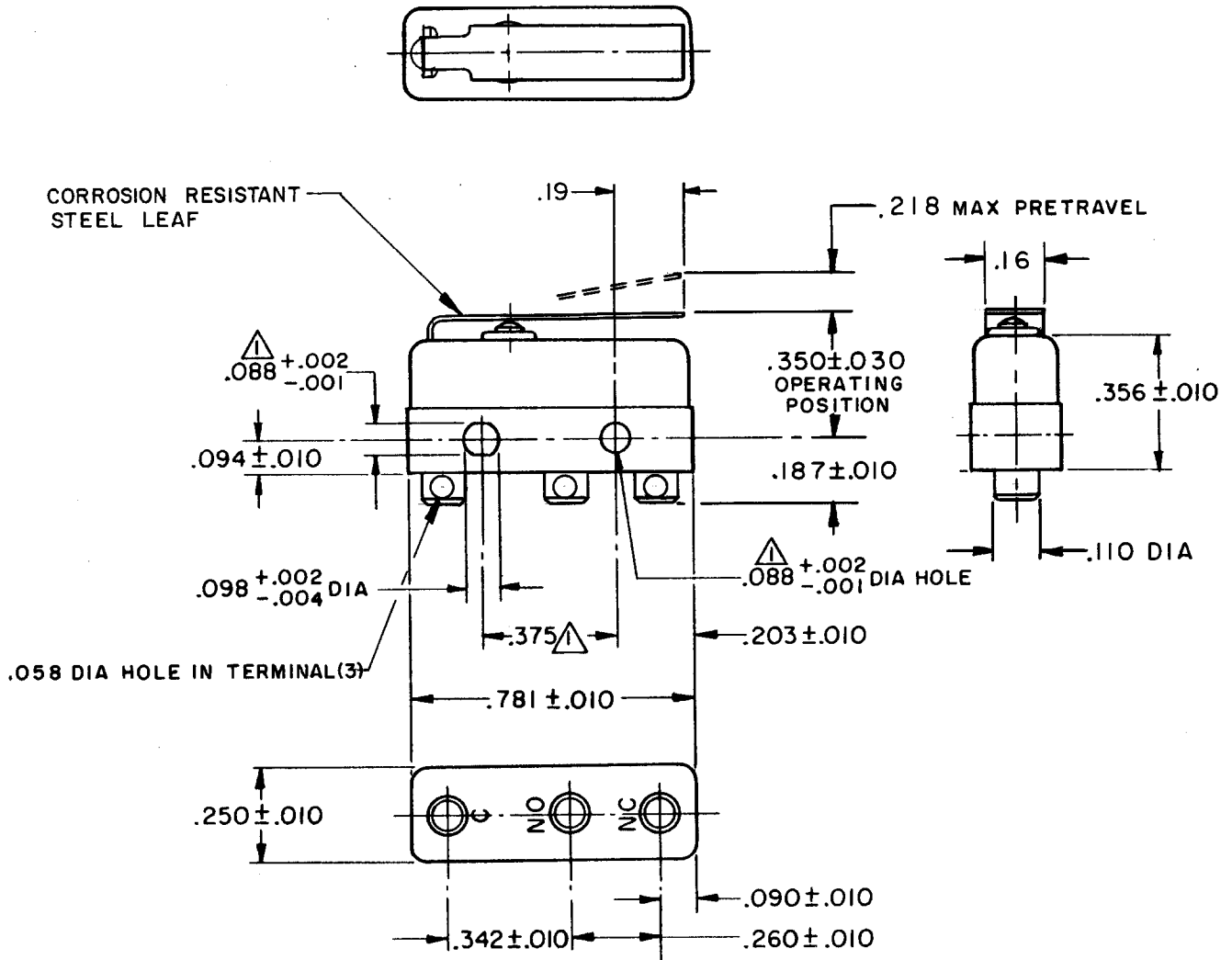
CHECK

CHECK

CHECK

CHECK

CHECK



NOTE -

- ▲ - MOUNTING HOLES WILL ACCEPT PINS OR SCREWS OF .087 MAX DIA ON .375 ±.002 CENTERS
- 2 - TERMINALS ARE PLATED FOR SOLDERING
- 3 - SWITCH WILL WITHSTAND TEMPERATURE OF 400° F

THIS DRAWING COVERS A PROPRIETARY ITEM AND IS THE PROPERTY OF MICRO SWITCH, A DIVISION OF HONEYWELL. THIS DRAWING IS NOT TO BE COPIED OR USED WITHOUT THE APPROVAL OF MICRO SWITCH.

**CHARACTERISTICS**

OPERATING FORCE ----- 7 OZ MAX  
 RELEASE FORCE ----- 2 OZ MIN  
 DIFFERENTIAL TRAVEL ----- .030 MAX  
 OVERTRAVEL ----- .030 MIN

**ELECTRICAL DATA**

CONTACT ARRANGEMENT  
 S P D T

UL LISTED-FILE E12252  
 CODE L4  
 5A-250 VAC



SCALE 2 TO 1

DO NOT SCALE PRINT

UNLESS OTHERWISE NOTED  
 DIMENSIONS ARE IN INCHES  
**TOLERANCES ARE:**

ONE PLACE	(.0)	±.030
TWO PLACE	(.00)	±.015
THREE PLACE	(.000)	±.005
ANGLES		±

WEIGHT .006 LB MAX