



**MICRO SWITCH**

FREEPORT, ILLINOIS, U.S.A.  
A DIVISION OF HONEYWELL

FED. MFG. CODE 91929

# SWITCH - BASIC

CATALOG LISTING  
**11SM23-T**

DRAWING NUMBER  
**11SM23-T**

ISSUE  
**M**

ISSUE  
**6**

ISSUE  
**6**

**REVISIONS**

A	CO22077	GCH	8 DEC 66
B	CO29449	SRH	24 FEB 72
C	CO39105	GLH	22 SEPT 77
D	CO82803-E	DLT	8 JAN 97
E	CO95172	JJA	17 JUNE 99

REPLACES

RELEASE NO.

CHECK

CHECK

CHECK

CHECK

CHECK

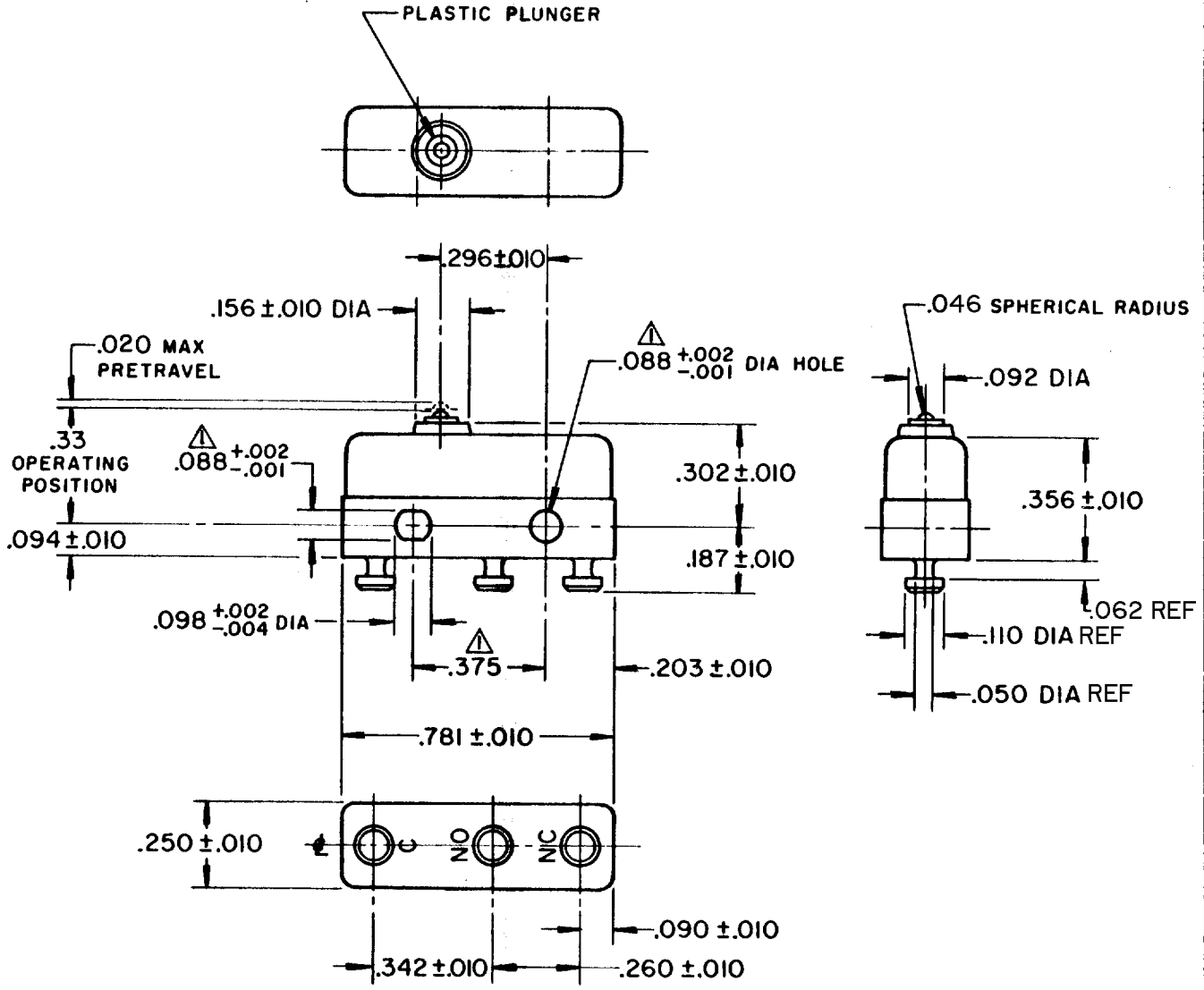
CHECK

CHECK

CHECK

CHECK

CHECK



NOTE--

- ▲-MOUNTING HOLES WILL ACCEPT PINS OR SCREWS OF .087 MAX DIA ON .375 ±.002 CENTERS
- 2-TERMINALS ARE PLATED FOR SOLDERING
- 3-MATING CONTACT SURFACES ARE 24K SOLID GOLD OVERLAY

THIS DRAWING COVERS A PROPRIETARY ITEM AND IS THE PROPERTY OF MICRO SWITCH, A DIVISION OF HONEYWELL. THIS DRAWING IS NOT TO BE COPIED OR USED WITHOUT THE APPROVAL OF MICRO SWITCH.

CHARACTERISTICS	ELECTRICAL DATA	SCALE 2 TO 1
OPERATING FORCE ----- 3-5 OZ	CONTACT ARRANGEMENT S P D T	DO NOT SCALE PRINT
RELEASE FORCE ----- 1 OZ MIN	30 VOLTS DC RATING	UNLESS OTHERWISE NOTED
DIFFERENTIAL TRAVEL ----- .004 MAX	INDUCTIVE ----- SEA LEVEL ----- 1/2 AMP	DIMENSIONS ARE IN INCHES
OVERTRAVEL ----- .005 MIN	50,000 FT ----- 1/2 AMP	<b>TOLERANCES ARE:</b>
	RESISTIVE ----- SEA LEVEL ----- 1 AMP	ONE PLACE (.0) ±.030
	50,000 FT ----- 1 AMP	TWO PLACE (.00) ±.015
	MAXIMUM INRUSH ----- 2 AMP	THREE PLACE (.000) ±.005
	UNDERWRITERS' LAB. INC. LISTED RATING	ANGLES ±
	-L22- 1A-125 VAC	WEIGHT .006 LB MAX

FORMTEK  
FO-90378

DRAWN

GCH 8 DEC 66