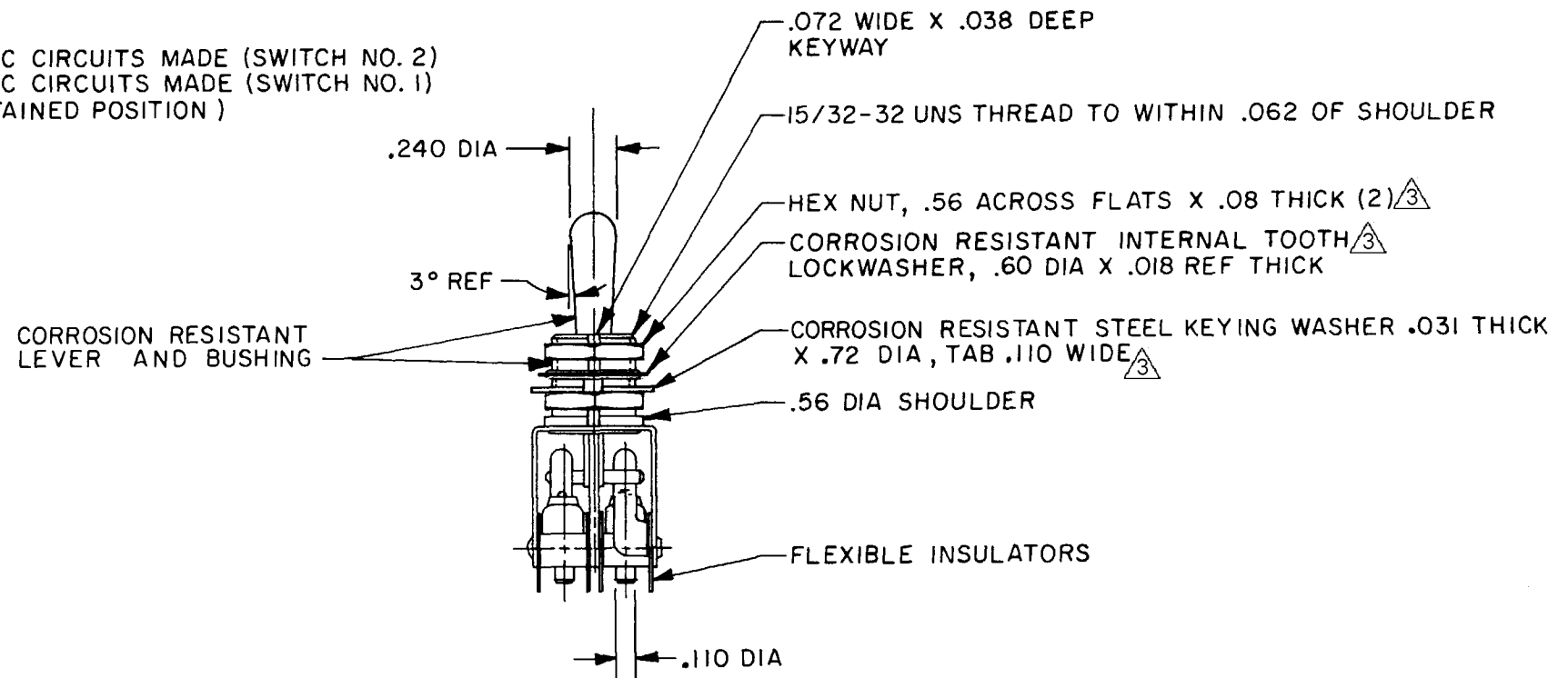
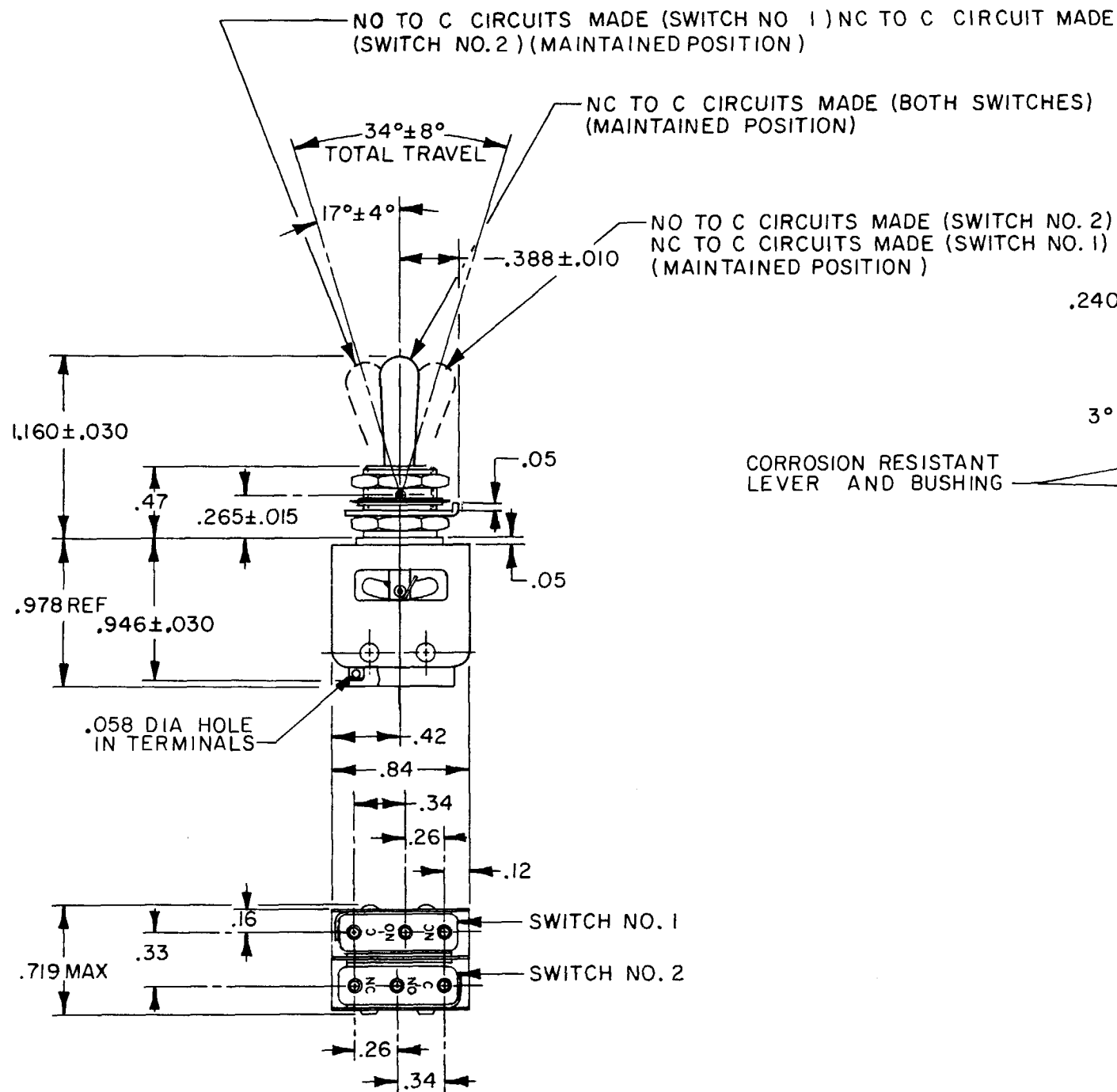


MICRO SWITCH
 FREEPORT, ILLINOIS, U.S.A.
 A DIVISION OF HONEYWELL
 FED. MFG. CODE 91929

**ASSEMBLY -
 TOGGLE SWITCH**

CATALOG LISTING
13AT2

RASTER
 FO-92881-B
 DRAWN
 S L B 6 JUN 83
 CHECK
 PER
 0 JUN 83
 CHECK
 ISSUE
 14
 DRAWING
 NUMBER
 M
 13AT2
 PAGE 1 OF 1
 REPLACES
 RELEASE NO.



- NOTES**
- 1 - UNIT INCLUDES (2) CATALOG LISTING 1SM1 TYPE BASIC SWITCH
 - 2 - TERMINALS ARE PLATED FOR SOLDERING
 - ³ - HARDWARE FURNISHED ASSEMBLED WITH SWITCH OR IN PACKET PER MIL - PRF - 8805
 - 4 - REPLACEMENT MOUNTING HARDWARE PACKET 15PA312-AT

THIS DRAWING COVERS A PROPRIETARY ITEM AND IS THE PROPERTY OF MICRO SWITCH, A DIVISION OF HONEYWELL. THIS DRAWING IS NOT TO BE COPIED OR USED WITHOUT THE APPROVAL OF MICRO SWITCH.

CHARACTERISTICS

ELECTRICAL DATA

CONTACT ARRANGEMENT
 S P D T (2)

250 VAC ----- 5 AMP

30 VOLTS DC RATING

INDUCTIVE ----- SEA LEVEL --- 3 AMP
 50,000 FT --- 2.5 AMP
 RESISTIVE ----- SEA LEVEL --- 5 AMP
 50,000 FT --- 5 AMP
 MAXIMUM INRUSH ----- 24 AMP

SCALE FULL

DO NOT SCALE PRINT

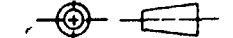
TOLERANCES

APPLY TO DESIGN UNITS. CONVERSIONS ARE ONLY FOR REFERENCE. UNLESS NOTED, TOLERANCES ARE ±

DIM.	TOL.	DIM.	TOL.
mm	mm/in	in	mm/in
NO PLACES	X	17.04	
ONE PLACE	X,X	0.47/018	X,X 0.87/03
TWO PLACES	X,XX	0.157/006	X,XX 0.387/016
THREE PLACES	X,XXX		X,XXX 0.157/006

DESIGN UNITS SI METRIC US CUSTOMARY

THIRD ANGLE PROJECTION



WEIGHT .06 LB