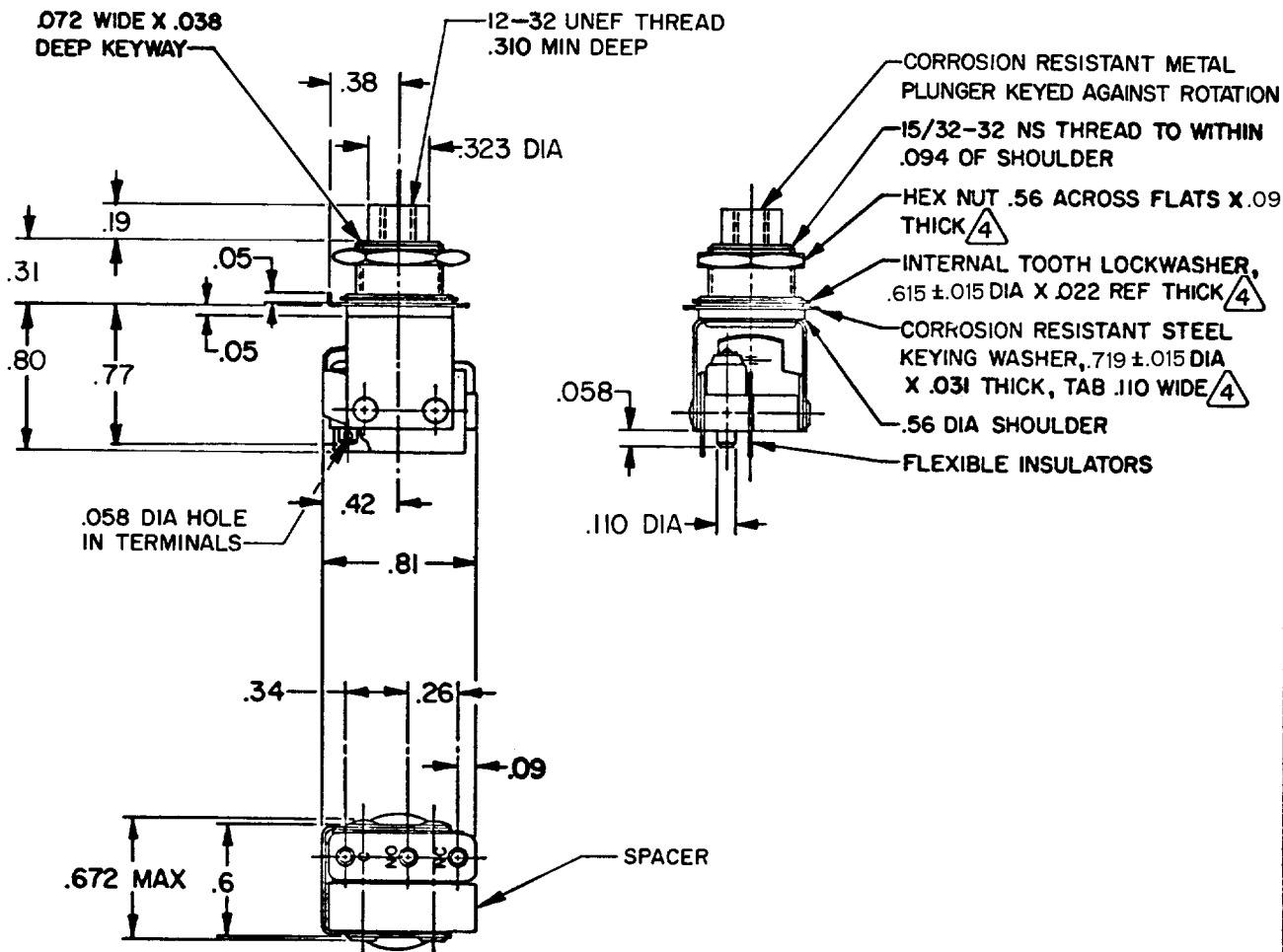


IPB765
 PAGE 1 OF 1
 M DRAWING NUMBER
 5 ISSUE
 RELEASE NO. PR-1251 REPLACES
 REVISIONS
 A NEW DWG CO35539
 P JUN 75
 B CO-93593
 PPF 22 OCT 98
 CHECK JAF 22 OCT 98
 CHECK JAF 16 JUN 75
 CHECK DAW 75
 DRAWN
 K P K10 JUN 75
 FORMTEK FO-52848-A
 DRAWN



- NOTES**
- 1 - UNIT INCLUDES CATALOG LISTING "ISM" TYPE BASIC SWITCH
 - 2 - TERMINALS ARE PLATED FOR SOLDERING
 - 3 - BASIC SWITCH HAS 24K SOLID GOLD CONTACTS
 - (4) MOUNTING HARDWARE FURNISHED UNASSEMBLED

THIS DRAWING COVERS A PROPRIETARY ITEM AND IS THE PROPERTY OF MICRO SWITCH, A DIVISION OF HONEYWELL. THIS DRAWING IS NOT TO BE COPIED OR USED WITHOUT THE APPROVAL OF MICRO SWITCH.

THIRD ANGLE PROJECTION

CHARACTERISTICS
 OPERATING FORCE ——— 1 LB APPROX

ELECTRICAL DATA
 CONTACT ARRANGEMENT
 S P D T

SCALE FULL

DO NOT SCALE PRINT

TOLERANCES

APPLY TO DESIGN UNITS. CONVERSIONS ARE ONLY FOR REFERENCE. UNLESS NOTED, TOLERANCES ARE ±

DIM.	TOL.	DIM.	TOL.
mm	mm/in	in	mm/in
NO PLACES	X	1/.04	
ONE PLACE	X,X	0.4/.016	X,X 0.8/.03
TWO PLACES	X,X,X	0.157/.006	X,X,X 0.387/.015
THREE PLACES	X,X,X,X		X,X,X,X 0.13/.005
ANGLES			

DESIGN UNITS SI METRIC US CUSTOMARY

30 VOLTS DC RATING

INDUCTIVE ——— SEA LEVEL — 1/2 AMP
 50,000 FT — 1/2 AMP
 RESISTIVE ——— SEA LEVEL — 1 AMP
 50,000 FT — 1 AMP
 MAXIMUM INRUSH ———— 2 AMP

WEIGHT

Mouser Electronics

Authorized Distributor

Click to View Pricing, Inventory, Delivery & Lifecycle Information:

[Honeywell:](#)

[1PB765](#)