

ITBI-2

M

DRAWING NUMBER

3

3

ISSUE

36

REPLACES

RELEASE NO.

CHECK

REVISIONS

A C09600
 R R R
 20 FEB 68

B C033498
 D B W
 14 MAY 74

C C036022
 R R R
 29 OCT 75

D C099824
 J A S
 18 SEPT 88

CHECK

REVISIONS

LSD 2 MAR 68

CHECK

LSD 2 MAR 68

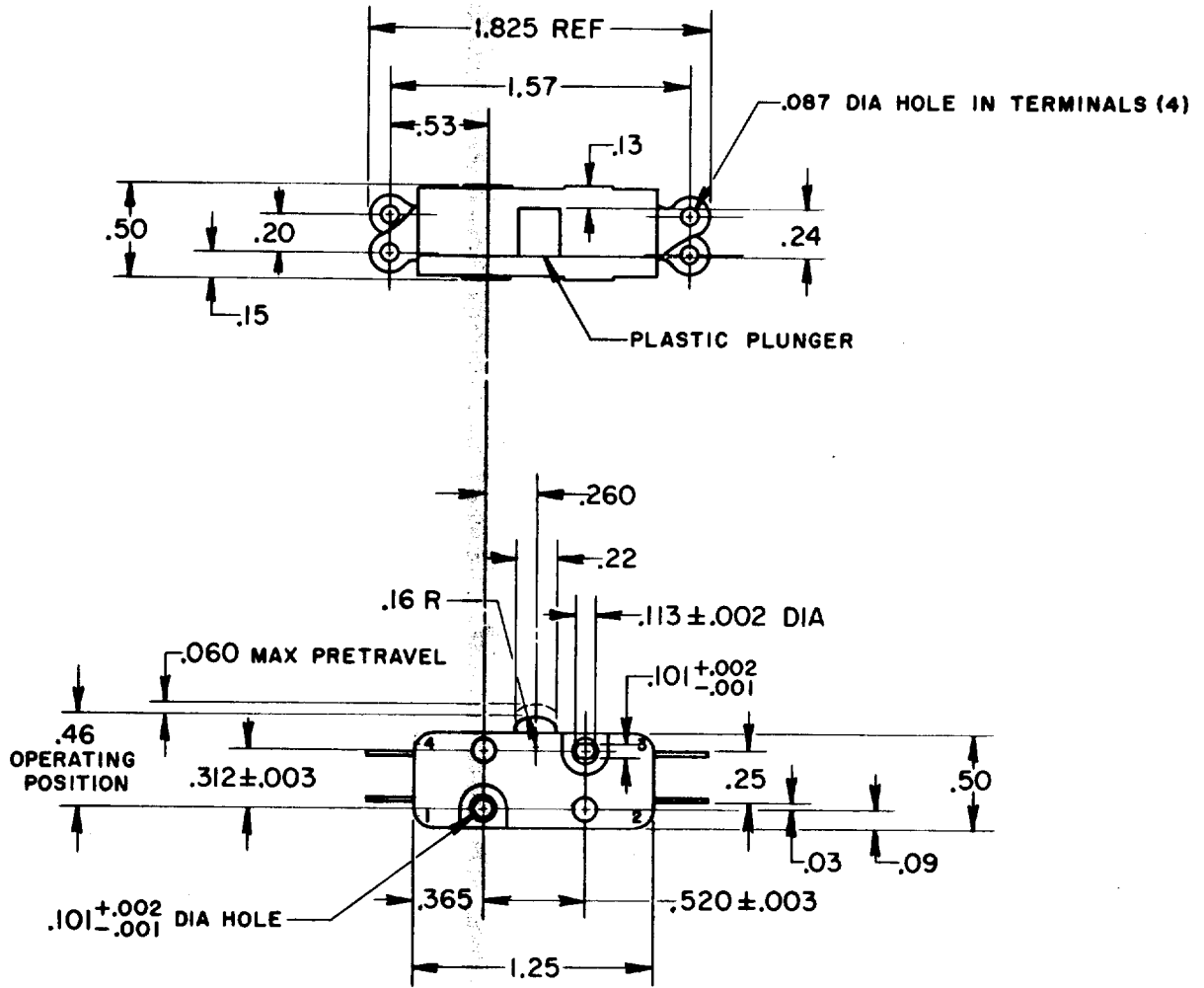
CHECK

R E R 20 FEB 68

DRAWN

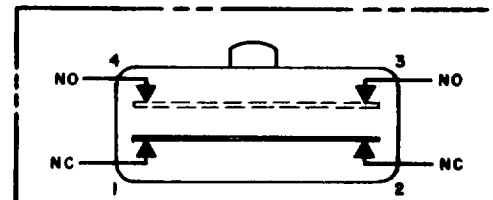
R E R 20 FEB 68

FO-80378



NOTE -
 1 - TERMINALS 1 & 2 NORMALLY CLOSED CIRCUIT
 2 - TERMINALS 3 & 4 NORMALLY OPEN CIRCUIT
 3 - TERMINALS ARE PLATED FOR SOLDERING

CIRCUIT DIAGRAM



THIS DRAWING COVERS A PROPRIETARY ITEM AND IS THE PROPERTY OF MICRO SWITCH, A DIVISION OF MINNEAPOLIS-HONEYWELL REGULATOR CO. THIS DRAWING IS NOT TO BE COPIED OR USED WITHOUT THE APPROVAL OF MICRO SWITCH.

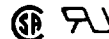
CHARACTERISTICS

OPERATING FORCE - - - - - 7-13 OZ
 RELEASE FORCE - - - - - 4 OZ MIN
 DIFFERENTIAL TRAVEL - - - - .010-.025
 OVERTRAVEL - - - - - .010 MIN

ELECTRICAL DATA

CONTACT ARRANGEMENT
 SEE CIRCUIT DIAGRAM

L25 10A-125 OR 250 VAC
 1/2HP-125 VAC



SCALE FULL

DO NOT SCALE PRINT

UNLESS OTHERWISE NOTED

DIMENSIONS ARE IN INCHES

TOLERANCES ARE:

ONE PLACE (.0) ± .030
 TWO PLACE (.00) ± .015
 THREE PLACE (.000) ± .005
 ANGLES ±

WEIGHT .02 LB